

Product datasheet for **VC102557**

SARS-CoV-2 S Gene Tagged ORF (codon optimized)

Product data:

Product Type:	Expression Plasmids
Product Name:	SARS-CoV-2 S Gene Tagged ORF (codon optimized)
Tag:	Myc-DDK
Symbol:	S Protein
Mammalian Cell Selection:	Neomycin
Vector:	pCMV6-Entry (PS100001)
E. coli Selection:	Kanamycin (25 ug/mL)
ORF Nucleotide Sequence:	>VC102557 representing NC_045512, codon optimized . Due to the complexity of NC_045512, the ORF clone is codon optimized for mammalian Expression. The nucleotide sequence differs from the reference sequence, yet the amino acid sequence remains identical. Blue=ORF Red=Cloning site Green=Tag(s)

```
GCTCGTTTAGTGAACCGTCAGAATTTTGTAAACGACTCACTATAGGGCGGCCGGGAATTCGTCGACTG
GATCCGGTACCGAGGAGATCTGCCGCCGCGATCGCC
ATGTTTGTGTTTCTCGTCTGCTGCCTCTGGTCTCCTCACAGTGCCTGAATCTGACAACGAGAACTCAG
CTCCCACCCGCATATACCAATTTTCCACCCGGGGTGTACTACCTGACAAAGTGTTCAGAAGCTCA
GTACTTCATCCACTCAGGACCTGTTTCTCCATTTTTCAGCAATGTTACCTGGTTTCACGCCATCCAC
GTATCCGGGACCAACGGCACGAAACGCTTTGATAACCCGGTCTGCCATTCAACGACGGGTCTATTTT
GCTTCAACTGAAAAAGCAACATTATCAGAGGCTGGATCTTCGGCACAACCTCGGACTCAAAGACTCAG
TCATTGCTCATTGTCAATAACGCAACCAACGTTGTGATCAAGGTCTGGAATTCAGTTCTGCAACGAT
CCGTTTCTGGCGTATACTACCACAAGAACAACAATCTTGGATGGAGAGTGAATTCGAGTTTATTCC
AGCGGAACAACCTGCACCTTCAATACGTTAGTCAGCCCTTCTCATGGACCTTGAGGGGAAACAAGGC
AATTTTAAAAATCTGCGGAATTCGATTCAAAAACATCGATGGCTACTTTAAAAATTTACTCAAACAC
ACTCCGATCAACCTGGTTAGGGACCTGCCCGAGGCTTCTCCGCTCTGGAGCCTCTGTGGACCTGCC
ATTGGAATTAATATCACCGCTTTCAGACGCTGCTCGCCCTGCATCGGTCTTATCTGACTCCCGCGAT
TCCTCATCAGTTGGACCGCTGGTCTGCGGCCTATTACGTCCGATATTCGACGCTCGGACATTCCTT
CTGAAATACAATGAGAATGGAACAATTACAGATGCTGTGGACTGTGCACTCGACCCGTTGTCCGAAACC
AAATGCACCTTGAAAAGCTTTACTGTGGAAAAGGGCATCTATCAGACATCTAACTCCGGTTCAACCT
ACCGAATCTATTGTCCGTTCCCAATATTACCAACCTTTGTCCCTTCGGTGAGGTATTCAACGCAACT
CGGTTTGCCTCAGTCTACGATGGAACCGCAAGAGGATTTCAATTGCGTTGCCGATTATTCAGTCTT
TACAACCTCGCAAGCTTTTCCAGTTTAAATGCTACGGAGTCTCCCAACAAAACCTCAACGACCTGTGC
TTTACCAATGTCTACGCAGACTCCTTTGTTATCCGCGGCGACGAGGTTAGGCAAATGCCCCAGGGCAG
ACTGGCAAGATCGCCGATTATAACTATAAGCTCCCCGATGACTTACAGGCTGCGTGATCGCATGGAAC
TCTAACCAACCTCGATAGTAAGGTGGGGGCAATTACAATTATCTTACCGCTGTTTCGAAAGTCAAAC
CTTAAACCCTTCGAGCGGATTTTCAACCGAAATTTATCAGGCCGGGAGCACACCATGCAACGGAGTG
```



View online »

GAGGGTTTCAACTGCTACTTCCCCTGCACTTACGGCTTCCAGCCACCAATGGTGTGGGTTATCAG
CCTTACAGAGTTGTTGTGCTCAGTTTCGAGCTCCTCCAGCCCCAGCTACCGTTTGCGGACCTAAGAAA
AGCACAAACCTGGTCAAAAATAAATGCGTAAACTTCAACTTTAACGGTCTGACTGGTACCGGCGTTCTC
ACCGAGTCCAATAAGAAATTCCTGCCATTTCAACAGTTTGGTAGAGACATCGCTGACACCACCGATGCT
GTCCGGGATCCCCAGACCCTTGAGATTCGACATAACGCCATGCTCATTGCGGGGTGTCAGCGTTATC
ACTCCGGGCACAAACTAGCAATCAGGTGGCCGTGCTGTACCAGGACGTGAAGTGCATGAAGTACCC
GTGGCCATTCACGCCGATCAGCTGACGCCAACCTGGAGAGTCTACTCAACAGGCTCTAACGTTTTTCAG
ACAAGAGCCGGTTGTTGATCGGAGCCGAACAGTAAATAATTATATGAATGTGACATCCAATCGGG
GCCGGATCTGCGCTAGTTACCAGACCCAGACTAACTCACCACGGAGAGCCAGAAGTGTAGCCTCCCAG
TCAATAATCGCTATAAATGTCTTTGGGCGGGAAAATAGCGTGGCCTACTCCAATAATCCATAGCC
ATTCCTCAACTTACAATTTCCGTCACGACCGAGATCCTGCCGGTGTCAATGACAAAAACCTCTGTG
GACTGCACAATGTATATATGTGGCGACAGTACCGAGTGTCTAATCTCCTTTTGCAGTATGGGCTCTTC
TGCACACAGCTGAATCGCGCTTACTGGTATCGCTGTGGAGCAAGATAAAAAACACGCAGGAAGTGTTC
GCTCAAGTGAAGCAGATTTATAAAACCCCTCCAATCAAAGATTTGCGCGGATTTAACTTCTCACAGATT
CTCCCTGATCCAAGTAAACCCTCCAAAAGAAGTTTCATAGAGGACCTCCTGTTCAACAAGTTACGCTG
GCTGATGCTGGTTTCATCAAGCAGTATGGGGACTGCCTCGGGCAGATAGCTGCTCGAGATTTGATCTGC
GCCAGAAATTCATGGGCTGACAGTGTGCCACCTCTTTGACAGACGAAATGATTGCACAATATACT
AGTGCCCTTTTGGCTGGCACCATCACATCCGGTTGGACTTTTGGTGCAGGAGCCGCACTCCAATAACCC
TTCGCAATGCAGATGGCATAACAGATTCAATGGCATTGGCGTCACCCAGAAGCTTCTACGAAAACCCAG
AACTGATAGCAAATCAGTTTAAACAGCGCTATCGGCAAGATCCAGGACTCCCTCTCATCAACTGCCTCA
GCCCTGGCAAGCTCCAGGATGTGGTAAACCAAAACGCCAGGCCCTCAACACTCTGGTCAAGCAGCTC
AGTTCTAACTTCGGAGCCATCTCTAGTGTCTCAATGACATCCTCTCTCGGCTGGACAAGGTGGAAGCA
GAGGTGCAGATCGACCGCTGATTACTGGACGCCTGCAGAGCTCCAGACCTACGTAACCCAGCAACTC
ATCCGGGCTGCCGAGATTAGGGCTTCCGCGAACCTCGCCGCCACAAAGATGAGCGAGTGGTACTTGGGA
CAGAGCAAGAGAGTGGATTTTTGTGGCAAGGGGTATCATCTCATGTCTTCCCTCAGAGCGCTCCTCAC
GGTGTGCTATTTTCCATGTGACTTATGTCCCGCCCAAGAGAAAAAATTCAACAACCGCTCCTGCTATC
TGCCACGACGGCAAAGCCATTTTCTCGGGAGGGAGTGTTCGTCTAATGGGACTCACTGGTTTGT
ACGCAGAGGAATTCTACGAGCCTCAGATCATCAACAGATAACACCTTTGTGTCTGGTAACTGTGAC
GTGGTTCATCGGCATAGTAAATAACACCGTCTACGACCCACTGCAGCCTGAACTGGATAGCTTTAAGGAA
GAGCTCGATAAGTACTTCAAAAACACACAAGCCCGGATGTAGATCTTGGAGACATTAGTGGGATTAAC
GCCAGCGTCGTTAACATACAAAAGAGATTGACCGATTGAACGAAGTTGCCAAAAACCTGAATGAATCC
CTGATCGATCTGCAGGAGCTCGGCAAGTACGAGCAGTATATTAATGGCCCTGGTACATTTGGCTGGGC
TTCATCGCGGGGCTCATCGCGATTGTGATGGTGACCATTATGCTGTGTTGCATGACCAGTTGCTGTAGC
TGTCTCAAAGGATGCTGCTCATGTGGCAGCTGTTGCAAGTTTCAGCAGGATGATTCCGAACCCGACTG
AAAGGCGTGAAACTCCATTATACT
ACGCGTACGCGGCCGCTCGAGCAGAACTCATCTCAGAAGAGGATCTGGCAGCAAATGATATCCTGGAT
TACAAGGATGACGACGATAAGGTTTAAACGGCCGGC

Protein Sequence: >VC102557 representing NC_045512
 Blue=ORF Red=Cloning site Green=Tag(s)

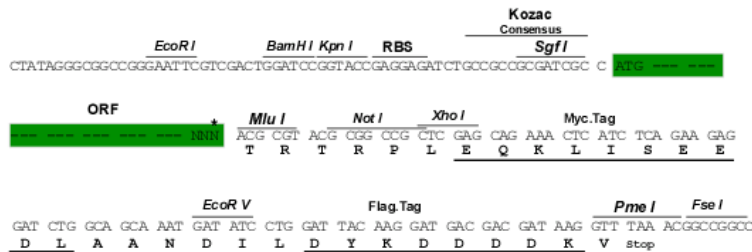
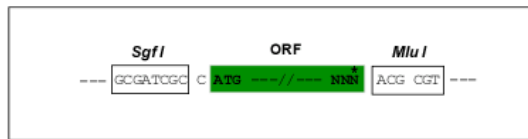
```

MFVFLVLLPLVSSQCVNLTTRTQLPPAYTNSFTRGVVYPDKVFRSSVLHSTQDLFLPFFSNVTWFHAIH
VSGTNGTKRFDNPVLPFNDGVYFASTEKSNIRGWIFGTTLSKTQSLI VNNATNVVVKVCFQFCND
PFLGVVYHKNNKSWMESEFRVYSSANNCTFEYVSQPFLMDLEGKQGNFKNLREFVFNIDGYFKIYSKH
TPINLVRDLPQGFSALEPLVDLPIGINITRFQTLALHRSYLPDSSSSGWTAGAAAYVGYLQPRTFLL
LKYNENGTITDAVDCALDPLSETKCLKSFTVEKGIYQTSNFRVQPTESI VRFPNITNLCPFGEVFNAT
RFASVYAWNRKRISNCVADYSVL YNSASFSTFKCYGVSPTKLNDLCFTNVYADSFVIRGDEVRQIAPGQ
TGKIADYNYKLPDDFTGCVIAWNSNNLDSKVGNYNYLYRLFRKSNLKPFERDISTEIIYQAGSTPCNGV
EGFNCFYPLQSYGFQPTNGVGYQPYRVVLSFELLHAPATVCGPKKSTNLVKNKCVNFNGLTGTGVL
TESNKKFLPFQFGRDIADTTDAVRDPQLEILDITPCSFGGVSITPGTNTSNQAVLYQDVNCTEVP
VAIHADQLTPTWRVYSTGSNVFQTRAGCLIGAHEVNNSYECDIPIGAGICASYQTQTNPRRARSVASQ
SIIAYTMSLGAENSVAYSNNIAIPTNF TISVTTEILPVSMTKTSVDCTMYICGDSTECNLLLQYGSF
CTQLNRALTGIAVEQDKNTQEVFAQVKQIYKTPPIKDFGGFNFSQILPDPSPKPSKRSFIEDLLFNKVTL
ADAGFIKQYGDCLGDIAARDL ICAQKFNGLTVLPPLLTDemiaAQYTSALLAGTITSGWTFGAGAALQIP
FAMQMA YRFNGIGV TQNVLYENQKLIANQFNSAIGKIQDSL SSTSASALGKLQDVVNQNAQALNTLVKQL
SSNFGAISSVLDILSRDKVEAEVQIDRLITGRLQSLQTYVTQQLIRAAEIRASANLAATKMSECVLG
QSKRVDFCGKGYHLMSFPQSAPHGVVFLHVTYVPAQEKNFTTAPAICHDKGAHFREGV FVSNGTHWFV
TQRNFYEPQIITDNTFVSGNCDVVIGIVNNTVYDPLQPELDSFKEELDKYFKNHTSPDVLGDISGIN
ASVVNIQKEIDRLNEVAKNLESIDLQELGKYEQYIKWPWYIWLGFIAGLIAIVMVTIMLCCMTSCCS
CLKGCCSCGSCCKFDEDDSEPV LKGVKLHYT
TRTRPLEQKLI SEEDLAANDILDYKDDDDK
  
```

Restriction Sites: SgfI-MluI

Cloning Scheme:

Cloning sites used for ORF Shuttling:



* The last codon before the Stop codon of the ORF

ACCN: NC_045512

ORF Size: 3819 bp

OTI Disclaimer: The molecular sequence of this clone can be viewed by clicking the "ORF Nucleotide Sequence" link above. The stop codon in the native sequence was removed to create the in-frame c-terminal fusion with a Myc-DDK tag.

OTI Annotation: This clone was engineered to express the complete ORF with an expression tag. Expression varies depending on the nature of the gene.

Components: The ORF clone is ion-exchange column purified and shipped in a 2D barcoded Matrix tube containing 10ug of transfection-ready, dried plasmid DNA (reconstitute with 100 ul of water).

Reconstitution Method:

1. Centrifuge at 5,000xg for 5min.
2. Carefully open the tube and add 100ul of sterile water to dissolve the DNA.
3. Close the tube and incubate for 10 minutes at room temperature.
4. Briefly vortex the tube and then do a quick spin (less than 5000xg) to concentrate the liquid at the bottom.
5. Store the suspended plasmid at -20°C. The DNA is stable for at least one year from date of shipping when stored at -20°C.

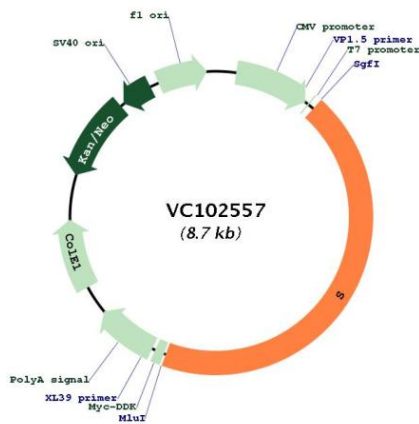
RefSeq: [YP_009724390](#)

RefSeq ORF: 3819 bp

Locus ID: 43740568

MW: 141.2 kDa

Product images:



Circular map for VC102557