

## Product datasheet for **VC102096**

### **N (NC\_001781) Virus Tagged ORF Clone**

#### Product data:

Product Type:	Expression Plasmids
Product Name:	N (NC_001781) Virus Tagged ORF Clone
Tag:	Myc-DDK
Symbol:	N Protein
Mammalian Cell Selection:	Neomycin
Vector:	pCMV6-Entry (PS100001)
E. coli Selection:	Kanamycin (25 ug/mL)
ORF Nucleotide Sequence:	>The Viral ORF clone VC102096 represents NCBI reference of NP_056858 with codon optimized for human cell expression Red=Cloning site Blue=ORF Green=Tags(s)

GACGTTGTATACGACTCCTATAGGGCGGCCGGGAATTCGTCGACTGGATCCGGTACCGAGGAGATCTGCC  
GCC**CGATCGCC**

ATGGCGCTGTCCAAGGTGAAGCTGAATGACACACTGAACAAAGATCAACTGCTCTCTAGCAGCAAGTATA  
CAATCCAGCGATCTACCGGAGATAACATCGACACCCCGAACTATGACGTCCAAAAGCATCTTAACAAGCT  
GTGTGGAATGCTGCTGATCACCGAGGATGCAAACCACAAATTTACAGGATTGATTGGAATGCTCTACGCC  
ATGTCGCGCTTGGTAGGGAAGACACAATCAAGATCCTGAAAGACGCCGGGTATCATGTCAAGGCCAATG  
GGGTGGATATTACCACCTACAGACAGGACATCAATGGCAAAGAGATGAAGTTTGAGTCCCTTACCCTCTC  
ATCCCTGACTAGTGAAATTCAGGTGAATATCGAAATAGAGAGTCGCAAATCATATAAAAAATGCTGAAG  
GAGATGGGCGAAGTGGCTCCAGAATACCGGCACGACTCCCCGACTGTGGTATGATAATTCTGTGTATCG  
CAGCCCTGGTGATTACAAAGCTGGCAGCCGGTGACCGCTCCGACTTACCGCCGTAATACGAAGAGCTAA  
TAATGTGCTGAAAAACGAGATCAAGAGATATAAGGGATTGATTCCAAAGGATATCGCCAATTCCTTCTAC  
GAAGTTTTCGAAAAACCCCTCACCTCATTGACGTATTTGTACACTTCGGAATTGCCAGTCTTCCACTA  
GGGGGGGAGCCCGTGGAGGGAATCTTGCAGGTCTTTTCATGAACGCTTATGGGAGCGCCAGGTAAT  
GCTCAGATGGGGCGTGTGCAAAGAGCGTCAAAAACATTATGCTCGGGCAGCTAGTGTCCAGGCCGAA  
ATGGAGCAGGTGGTCAAGTGTATGAGTATGCGCAGAACTCGGAGGCGAGGCCGTTTCTATCATATTT  
TGAAATAATCCTAAGGCAAGCCTTCTGTCTCTGACCCAGTTCCTAATTTCTCTAGCGTGGTGTGGGCAA  
CGCCGCCGGACTTGGCATCATGGGCAATACAGAGGAACCCCGCAATCAGGATCTCTACGACGCCGCC  
AAGGCATATGCTGAGCAGCTGAAGGAAAACGGCGTTATCAATTATAGTGTGCTGGACCTGACTGCAGAGG  
AGCTCGAGGCTATAAAGAACCAGCTGAATCCGAAGGAAGATGACGTGGAGCTC

**ACGCGT**ACGCGGCCGCTCGAGCAGAACTCATCTCAGAAGAGGATCTGGCAGCAAATGATATCCTGGATT  
ACAAGGATGACGACGATAAGGTTTAA



[View online »](#)

Protein Sequence: >VC102096 representing NP\_056858  
 Red=Cloning sites Green=Tags

MALSKVKLN~~DTL~~NKDQLLSSSKYTIQRSTGDNIDTPNYDVQKHLNKL~~CGMLL~~ITEDANHKFTGLIGMLYA  
 MSRLGREDTIKILKDAGYHVKANGVDITTYRQDINGKEMKFEVL TSSLTSEIQVNI~~EIESRKS~~SYKKMLK  
 EMGEVAPEYRHSDPCGMIILCIAALVITKLAAGDRSGLTAVIRRANNVLKNEIKRYKGLIPKDIANSFY  
 EVFEKHPHLIDV~~FVHFGIAQSSTRGGS~~RVEGIFAGLFMNAYGSGQVMLRWGVLAKSVKNIMLGHASVQAE  
 MEQVVEVYEYAQKLGG~~EAGFYHILN~~NPKASLLSLTQFPNFSSVVLGNAAGLGIMGEYRGT~~PRNQDLY~~DA  
 KAYAEQLKENGVINYSVLDLTAEELEAIKNQLNPKEDDVEL

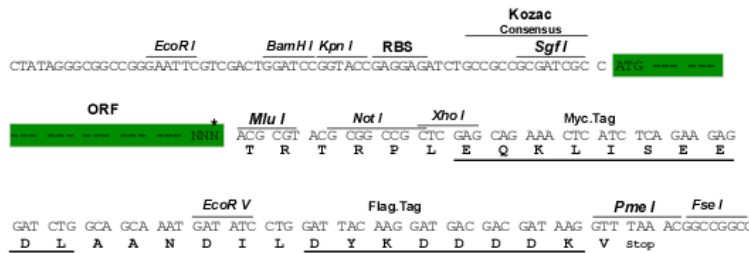
TRTRRLEQKLISEEDLAANDILDYKDDDDKV

Chromatograms: [https://cdn.origene.com/chromatograms/ja2070\\_a02.zip](https://cdn.origene.com/chromatograms/ja2070_a02.zip)

Restriction Sites: Sgfl-MluI

Cloning Scheme:

Cloning sites used for ORF Shuttling:



\* The last codon before the Stop codon of the ORF

ACCN: NC\_001781

ORF Size: 1173 bp

OTI Disclaimer: Due to the inherent nature of this plasmid, standard methods to replicate additional amounts of DNA in E. coli are highly likely to result in mutations and/or rearrangements. Therefore, OriGene does not guarantee the capability to replicate this plasmid DNA. Additional amounts of DNA can be purchased from OriGene with batch-specific, full-sequence verification at a reduced cost. Please contact our customer care team at [custsupport@origene.com](mailto:custsupport@origene.com) or by calling 301.340.3188 option 3 for pricing and delivery.

The molecular sequence of this clone can be viewed by clicking the "ORF Nucleotide Sequence" link above. This sequence represents the NCBI reference after codon optimization for human cell expression, and retaining the same decoded protein sequence. The stop codon in the native sequence was removed to create the in-frame c-terminal fusion with a Myc-DDK tag.

<b>Components:</b>	The ORF clone is ion-exchange column purified and shipped in a 2D barcoded Matrix tube containing 10ug of transfection-ready, dried plasmid DNA (reconstitute with 100 ul of water).
<b>Reconstitution Method:</b>	<ol style="list-style-type: none"><li>1. Centrifuge at 5,000xg for 5min.</li><li>2. Carefully open the tube and add 100ul of sterile water to dissolve the DNA.</li><li>3. Close the tube and incubate for 10 minutes at room temperature.</li><li>4. Briefly vortex the tube and then do a quick spin (less than 5000xg) to concentrate the liquid at the bottom.</li><li>5. Store the suspended plasmid at -20°C. The DNA is stable for at least one year from date of shipping when stored at -20°C.</li></ol>
<b>RefSeq:</b>	<u>NC_001781.1, NP_056858</u>
<b>RefSeq ORF:</b>	1173 bp
<b>Locus ID:</b>	1489820
<b>MW:</b>	43.4 kDa