

Product datasheet for **UM800143CF**

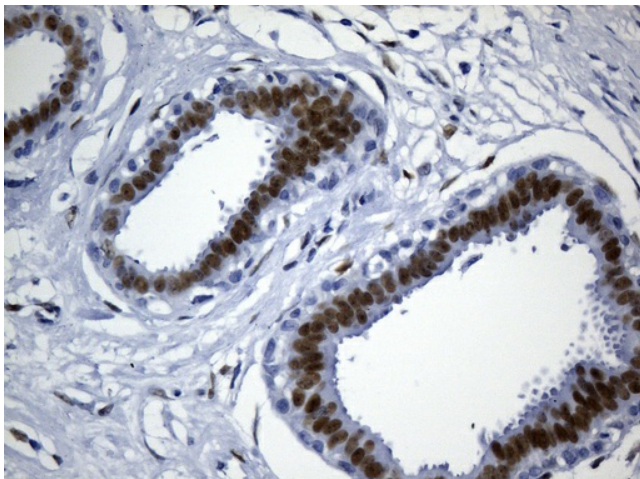
TLE 1 (TLE1) Mouse Monoclonal Antibody [Clone ID: UMAB253]

Product data:

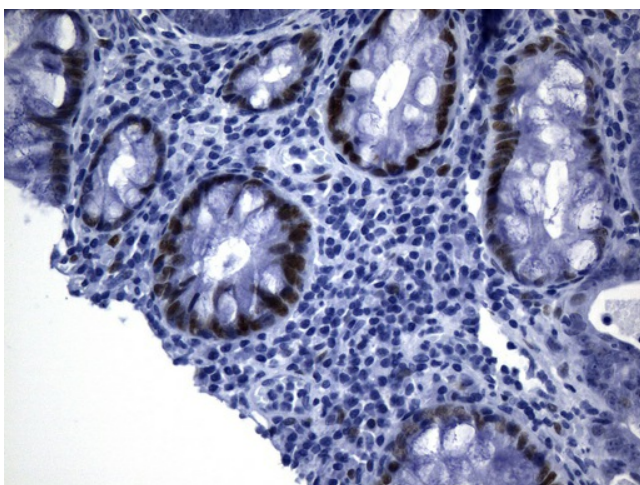
Product Type:	Primary Antibodies
Clone Name:	UMAB253
Applications:	10k-ChIP, IF, IHC, WB
Recommended Dilution:	WB 1:2000, IHC 1:100~300, IF 1:100
Reactivity:	Human, Mouse, Rat
Host:	Mouse
Isotype:	IgG2a
Clonality:	Monoclonal
Immunogen:	Human recombinant protein fragment corresponding to amino acids 180-460 of human TLE1 (NP_005068) produced in E.coli.
Formulation:	Lyophilized powder (original buffer 1X PBS, pH 7.3, 8% trehalose)
Reconstitution Method:	For reconstitution, we recommend adding 100uL distilled water to a final antibody concentration of about 1 mg/mL. To use this carrier-free antibody for conjugation experiment, we strongly recommend performing another round of desalting process. (OriGene recommends Zeba Spin Desalting Columns, 7KMWCO from Thermo Scientific)
Purification:	Purified from mouse ascites fluids or tissue culture supernatant by affinity chromatography (protein A/G)
Conjugation:	Unconjugated
Storage:	Store at -20°C as received.
Stability:	Stable for 12 months from date of receipt.
Predicted Protein Size:	83 kDa
Gene Name:	TLE family member 1, transcriptional corepressor
Database Link:	NP_005068 Entrez Gene 21885 MouseEntrez Gene 362533 RatEntrez Gene 7088 Human Q04724
Synonyms:	ESG; ESG1; GRG1
Protein Families:	Transcription Factors



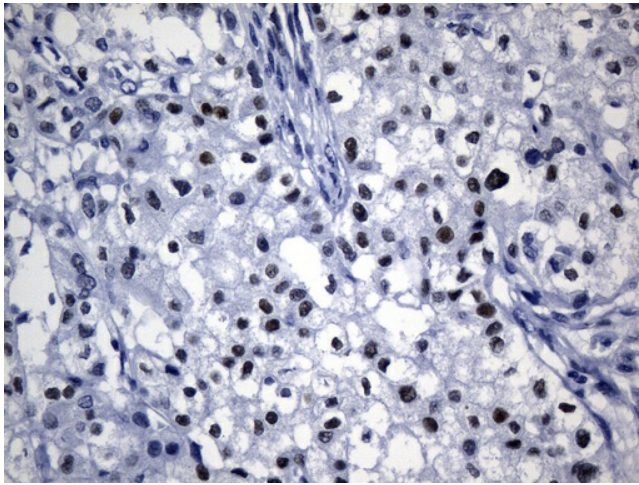
[View online »](#)

Product images:

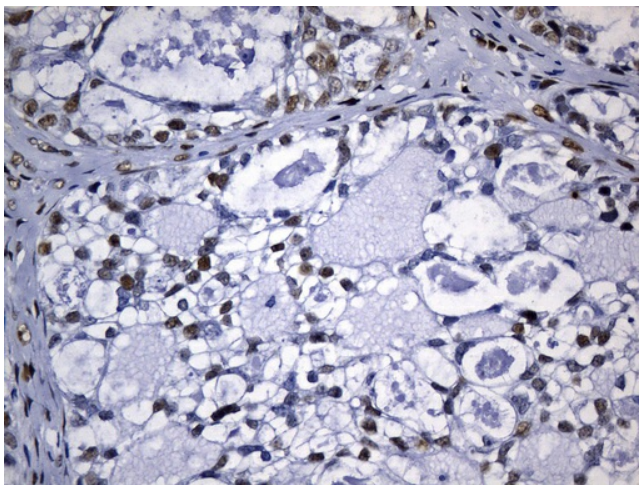
Immunohistochemical staining of paraffin-embedded Human breast tissue within the normal limits using anti-TLE1 mouse monoclonal antibody. (Heat-induced epitope retrieval by 1mM EDTA in 10mM Tris buffer (pH8.0) at 120°C for 2.5 min, [UM800143]) (1:300)



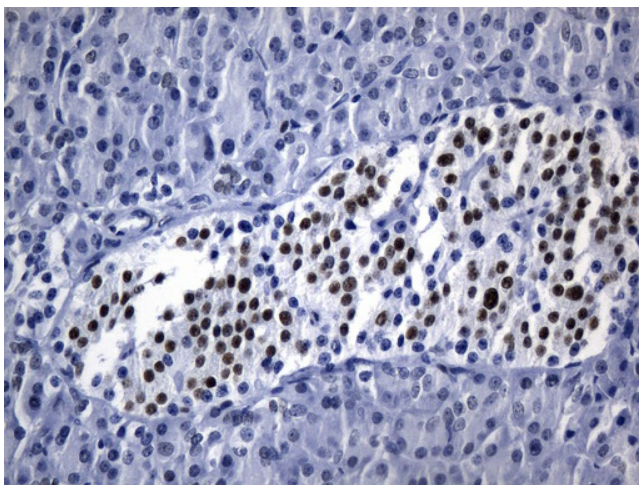
Immunohistochemical staining of paraffin-embedded Human colon tissue within the normal limits using anti-TLE1 mouse monoclonal antibody. (Heat-induced epitope retrieval by 1mM EDTA in 10mM Tris buffer (pH8.0) at 120°C for 2.5 min, [UM800143]) (1:300)



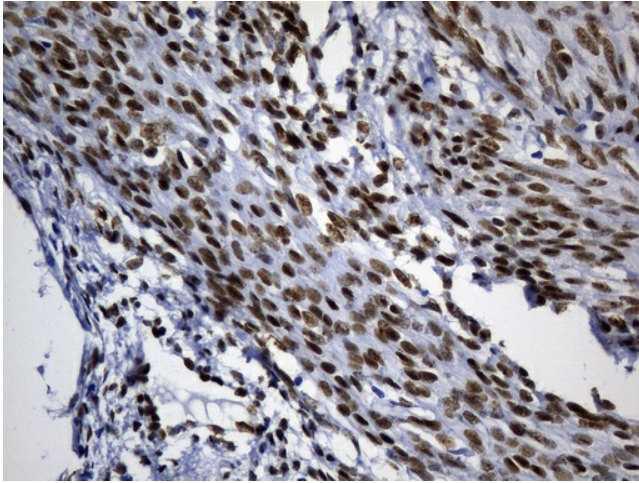
Immunohistochemical staining of paraffin-embedded Carcinoma of Human kidney tissue using anti-TLE1 mouse monoclonal antibody. (Heat-induced epitope retrieval by 1mM EDTA in 10mM Tris buffer (pH8.0) at 120°C for 2.5 min, [UM800143]) (1:300)



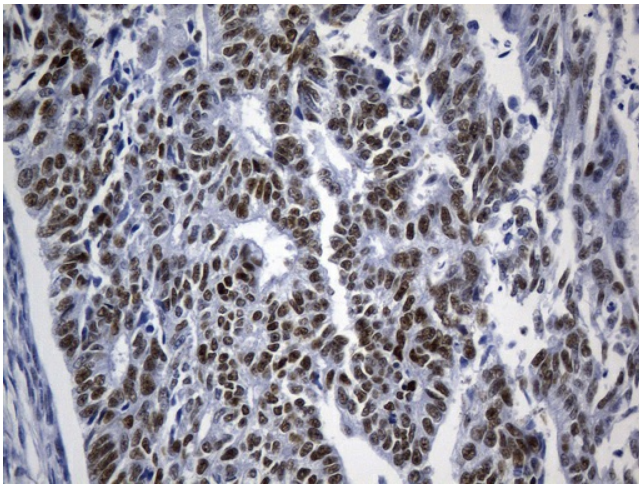
Immunohistochemical staining of paraffin-embedded Adenocarcinoma of Human ovary tissue using anti-TLE1 mouse monoclonal antibody. (Heat-induced epitope retrieval by 1mM EDTA in 10mM Tris buffer (pH8.0) at 120°C for 2.5 min, [UM800143]) (1:300)



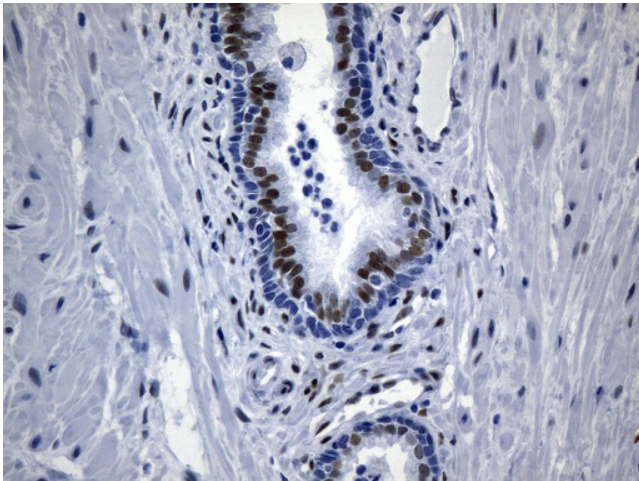
Immunohistochemical staining of paraffin-embedded Human pancreas tissue within the normal limits using anti-TLE1 mouse monoclonal antibody. (Heat-induced epitope retrieval by 1mM EDTA in 10mM Tris buffer (pH8.0) at 120°C for 2.5 min, [UM800143]) (1:300)



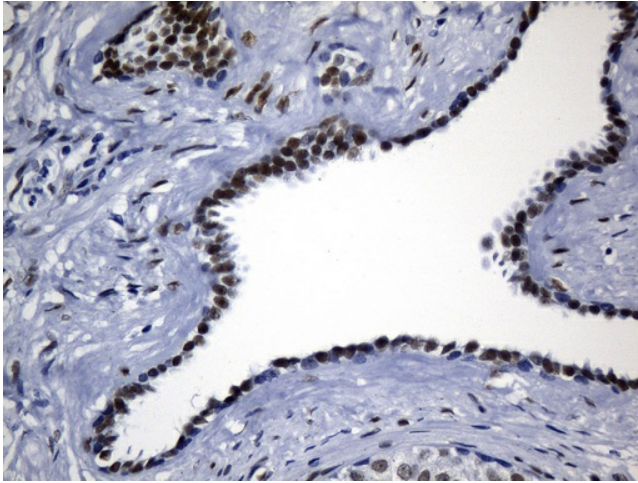
Immunohistochemical staining of paraffin-embedded Human endometrium tissue within the normal limits using anti-TLE1 mouse monoclonal antibody. (Heat-induced epitope retrieval by 1mM EDTA in 10mM Tris buffer (pH8.0) at 120°C for 2.5 min, [UM800143]) (1:300)



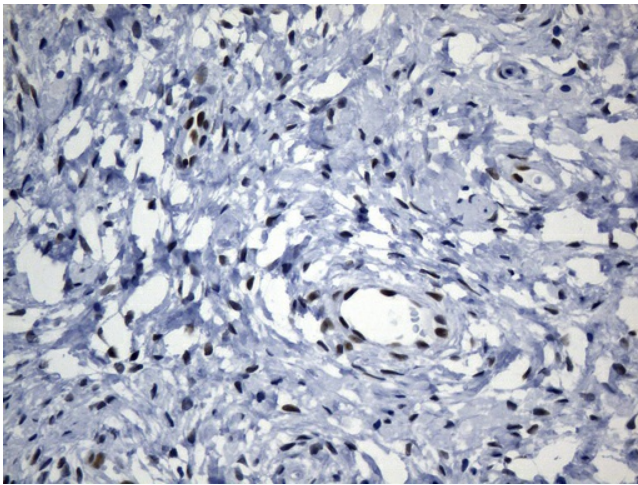
Immunohistochemical staining of paraffin-embedded Adenocarcinoma of Human endometrium tissue using anti-TLE1 mouse monoclonal antibody. (Heat-induced epitope retrieval by 1mM EDTA in 10mM Tris buffer (pH8.0) at 120°C for 2.5 min, [UM800143]) (1:300)



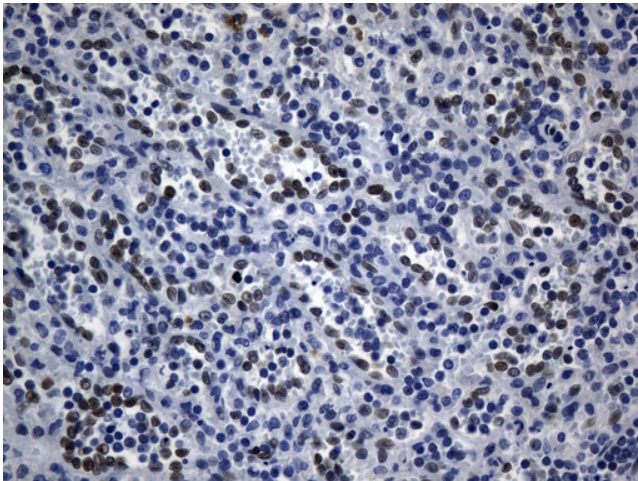
Immunohistochemical staining of paraffin-embedded Human prostate tissue within the normal limits using anti-TLE1 mouse monoclonal antibody. (Heat-induced epitope retrieval by 1mM EDTA in 10mM Tris buffer (pH8.0) at 120°C for 2.5 min, [UM800143]) (1:300)



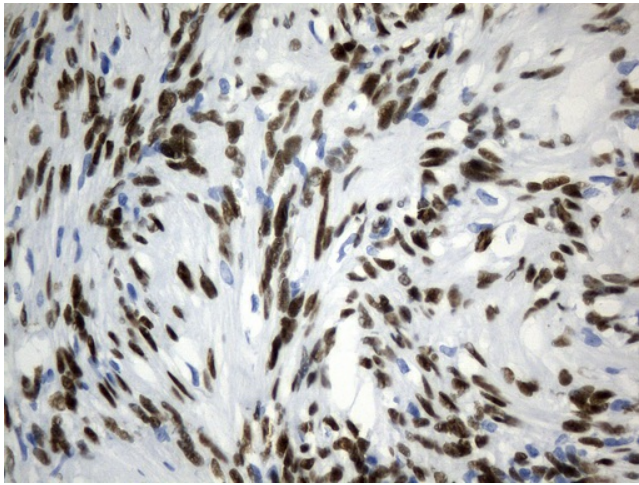
Immunohistochemical staining of paraffin-embedded Carcinoma of Human prostate tissue using anti-TLE1 mouse monoclonal antibody. (Heat-induced epitope retrieval by 1mM EDTA in 10mM Tris buffer (pH8.0) at 120°C for 2.5 min, [UM800143]) (1:300)



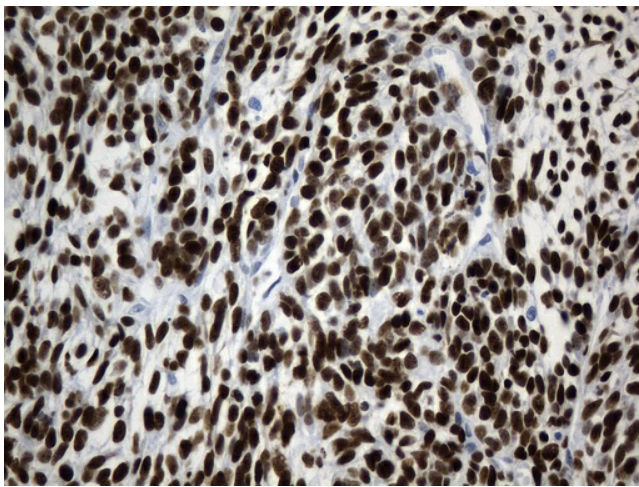
Immunohistochemical staining of paraffin-embedded Human cervix uterus within the normal limits using anti-TLE1 mouse monoclonal antibody. (Heat-induced epitope retrieval by Tris-EDTA in 10mM Tris buffer (pH8.0) at 120°C for 2.5 min, [UM800143]) (1:300)



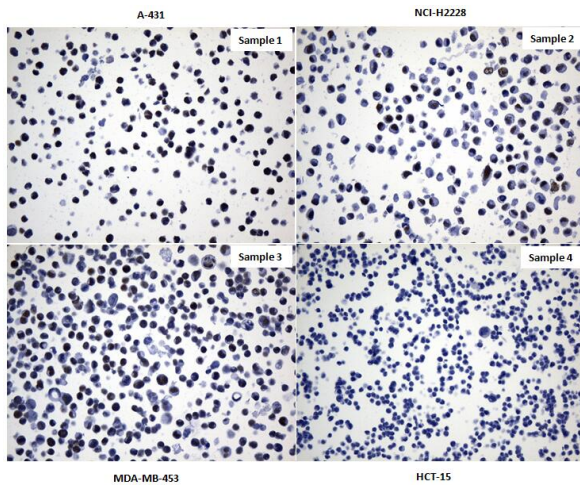
Immunohistochemical staining of paraffin-embedded Human spleen tissue within the normal limits using anti-TLE1 mouse monoclonal antibody. (Heat-induced epitope retrieval by 1mM EDTA in 10mM Tris buffer (pH8.0) at 120°C for 2.5 min, [UM800143]) (1:300)



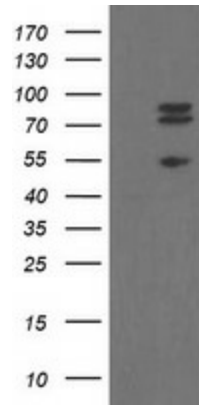
Immunohistochemical staining of paraffin-embedded Human neurilemmoma tissue using anti-TLE1 mouse monoclonal antibody. (Heat-induced epitope retrieval by 1mM EDTA in 10mM Tris buffer (pH8.0) at 120°C for 2.5 min, [UM800143]) (1:300)



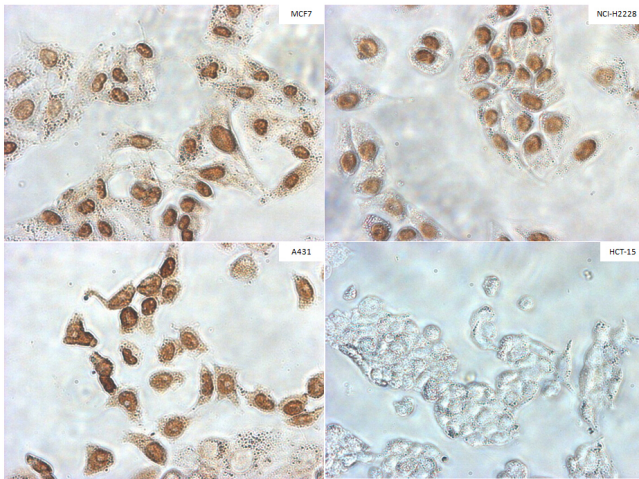
Immunohistochemical staining of paraffin-embedded Human synovial sarcoma tissue using anti-TLE1 mouse monoclonal antibody. (Heat-induced epitope retrieval by 1mM EDTA in 10mM Tris buffer (pH8.0) at 120°C for 2.5 min, [UM800143]) (1:300)



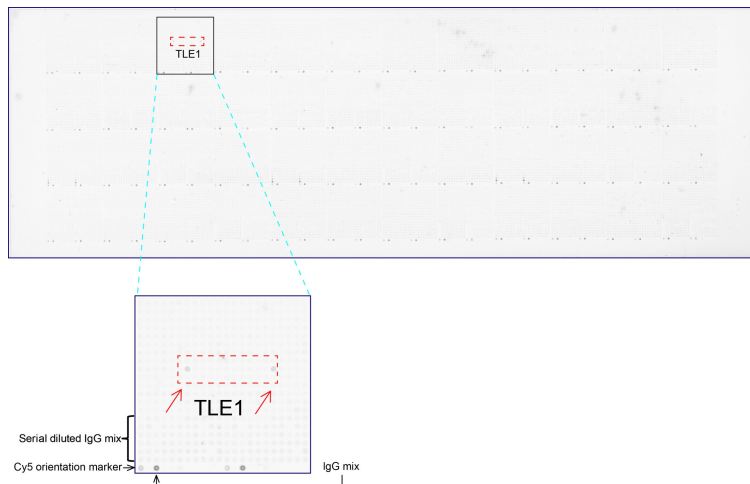
Immunohistochemical staining of paraffin-embedded cell pellets (Sample1 is A-431, sample2 is NCI-H2228, sample3 is MDA-MB-453 and sample4 is HCT-15) using anti-TLE1 Mouse monoclonal antibody. (Heat-induced epitope retrieval by 1mM EDTA in 10mM Tris buffer (pH8.0) at 120°C for 2.5 min, [UM800143]) (1:300)



HEK293T cells were transfected with the pCMV6-ENTRY control (Left lane) or pCMV6-ENTRY TLE1 ([RC204037], Right lane) cDNA for 48 hrs and lysed. Equivalent amounts of cell lysates (5 ug per lane) were separated by SDS-PAGE and immunoblotted with anti-TLE1 (1:2000).



Immunofluorescent staining of 4 different cell lines (MCF7, NCI-H2228, A431, HCT-15) using anti-TLE1 mouse monoclonal antibody ([UM800143]) (1:100).



OriGene overexpression protein microarray chip was immunostained with UltraMAB anti-TLE1 mouse monoclonal antibody ([UM800143]). The positive reactive proteins are highlighted with two red arrows in the enlarged subarray. All the positive controls spotted in this subarray are also labeled for clarification (1:100).