

Product datasheet for **UM800109CF**

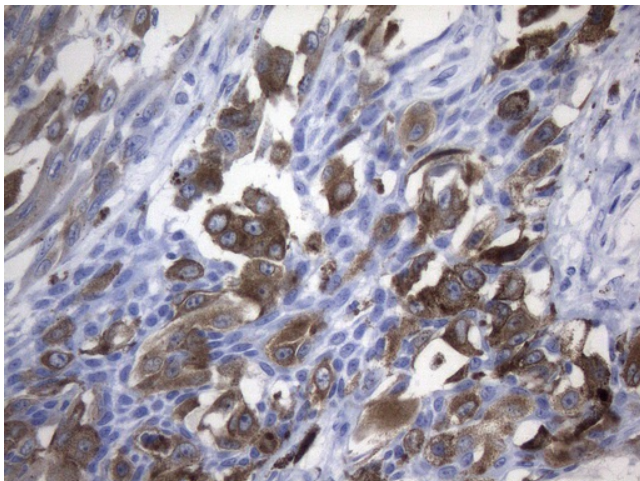
MelanA (MLANA) Mouse Monoclonal Antibody [Clone ID: UMAB217]

Product data:

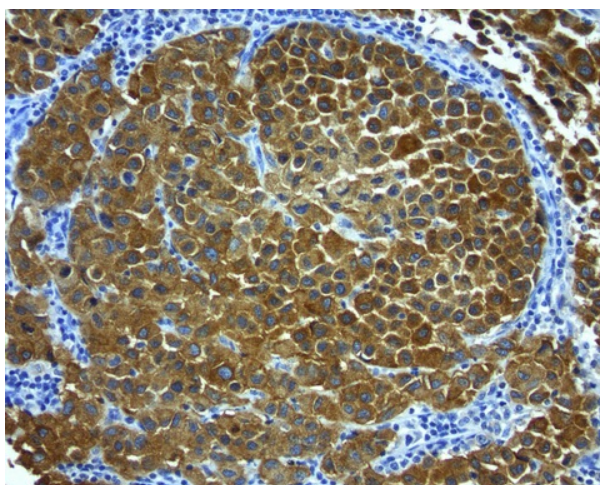
Product Type:	Primary Antibodies
Clone Name:	UMAB217
Applications:	10k-ChIP, IHC, WB
Recommended Dilution:	IHC 1:100~200
Reactivity:	Human
Host:	Mouse
Isotype:	IgG1
Clonality:	Monoclonal
Immunogen:	Human recombinant protein fragment corresponding to amino acids 48-118 of human MLANA(NP_005502) produced in E.coli.
Formulation:	Lyophilized powder (original buffer 1X PBS, pH 7.3, 8% trehalose)
Reconstitution Method:	For reconstitution, we recommend adding 100uL distilled water to a final antibody concentration of about 1 mg/mL. To use this carrier-free antibody for conjugation experiment, we strongly recommend performing another round of desalting process. (OriGene recommends Zeba Spin Desalting Columns, 7KMWCO from Thermo Scientific)
Purification:	Purified from mouse ascites fluids or tissue culture supernatant by affinity chromatography (protein A/G)
Conjugation:	Unconjugated
Storage:	Store at -20°C as received.
Stability:	Stable for 12 months from date of receipt.
Predicted Protein Size:	13 kDa
Gene Name:	melan-A
Database Link:	NP_005502 Entrez Gene 2315 Human Q16655
Synonyms:	MART-1; MART1
Protein Families:	Transmembrane



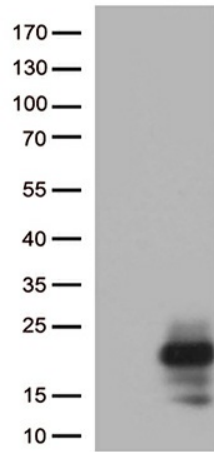
[View online »](#)

Product images:

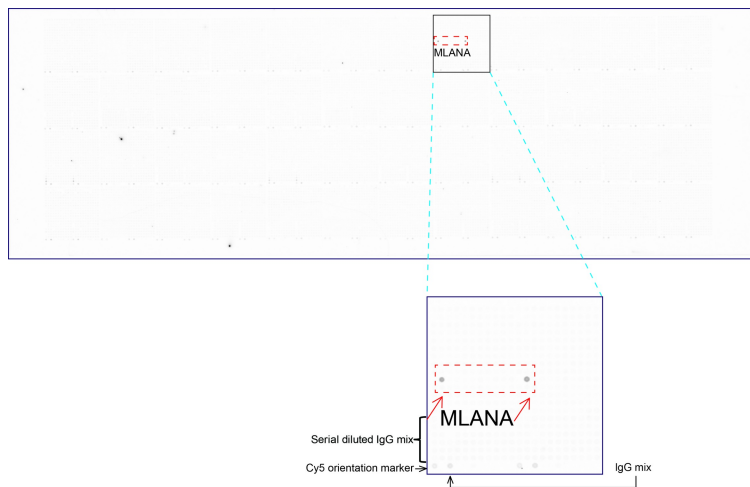
Immunohistochemical staining of paraffin-embedded Human melanoma tissue using anti-MLANA mouse monoclonal antibody. HIER pretreatment was done with 1mM EDTA in 10mM Tris buffer (pH8.0) at 120°C for 2.5 minutes. [UM800109] was diluted 1:200 and detection was done with HRP secondary and DAB chromogen. Strong cytoplasmic and membrane stain in the tumor cells.



Immunohistochemical staining of paraffin-embedded human melanoma metastasis to the lymphnode using mouse anti-MLANA clone UMAB217 ([UM800109]) at 1:100 with Polink2 Broad HRP DAB detection kit; pretreatment of tissue prior to stain with heat-induced epitope retrieval with EDTA pH 8.0 buffer using pressure chamber for 3 minutes at 110C is required for optimal staining. Shown here strong cytoplasmic tumor cells.



HEK293T cells were transfected with the pCMV6-ENTRY control (Left lane) or pCMV6-ENTRY MLANA ([RC204190], Right lane) cDNA for 48 hrs and lysed. Equivalent amounts of cell lysates (5 ug per lane) were separated by SDS-PAGE and immunoblotted with anti-MLANA (1:500)



OriGene overexpression protein microarray chip was immunostained with UltraMAB anti-MLANA mouse monoclonal antibody ([UM800109]). The positive reactive proteins are highlighted with two red arrows in the enlarged subarray. All the positive controls spotted in this subarray are also labeled for clarification (1:100).