

Product datasheet for **UM800041CF**

HMBS Mouse Monoclonal Antibody [Clone ID: UMAB144]

Product data:

Product Type:	Primary Antibodies
Clone Name:	UMAB144
Applications:	IF, IHC, WB
Recommended Dilution:	WB 1:2000, IHC 1:200
Reactivity:	Human, Mouse, Rat
Host:	Mouse
Isotype:	IgG1
Clonality:	Monoclonal
Immunogen:	Full length human recombinant protein of human HMBS (NP_000181) produced in HEK293T cell.
Formulation:	Lyophilized powder (original buffer 1X PBS, pH 7.3, 8% trehalose)
Reconstitution Method:	For reconstitution, we recommend adding 100uL distilled water to a final antibody concentration of about 1 mg/mL. To use this carrier-free antibody for conjugation experiment, we strongly recommend performing another round of desalting process. (OriGene recommends Zeba Spin Desalting Columns, 7KMWCO from Thermo Scientific)
Purification:	Purified from mouse ascites fluids or tissue culture supernatant by affinity chromatography (protein A/G)
Conjugation:	Unconjugated
Storage:	Store at -20°C as received.
Stability:	Stable for 12 months from date of receipt.
Gene Name:	hydroxymethylbilane synthase
Database Link:	NP_000181 Entrez Gene 15288 Mouse Entrez Gene 25709 Rat Entrez Gene 3145 Human P08397



[View online »](#)

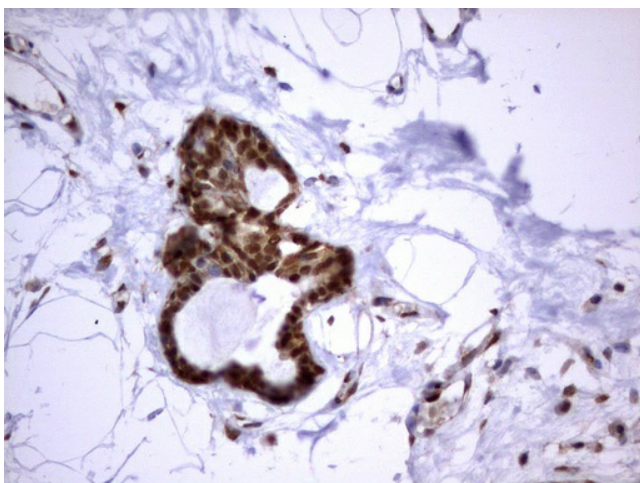
Background: This gene encodes a member of the hydroxymethylbilane synthase superfamily. The encoded protein is the third enzyme of the heme biosynthetic pathway and catalyzes the head to tail condensation of four porphobilinogen molecules into the linear hydroxymethylbilane. Mutations in this gene are associated with the autosomal dominant disease acute intermittent porphyria. Alternatively spliced transcript variants encoding different isoforms have been described. [provided by RefSeq, Jul 2008]

Synonyms: PBG-D; PBGD; PORC; UPS

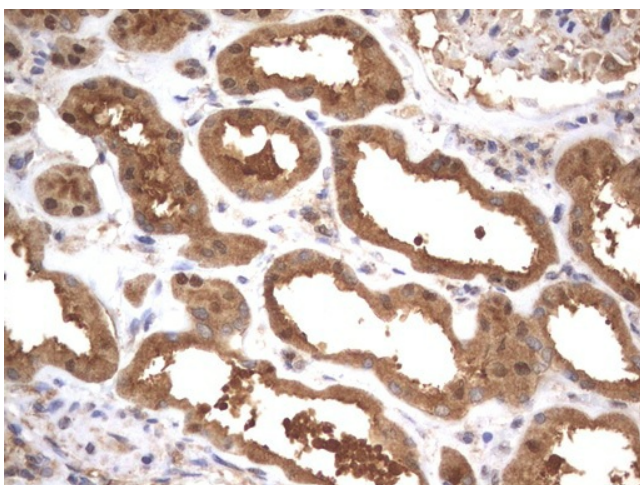
Protein Families: Druggable Genome

Protein Pathways: Metabolic pathways, Porphyrin and chlorophyll metabolism

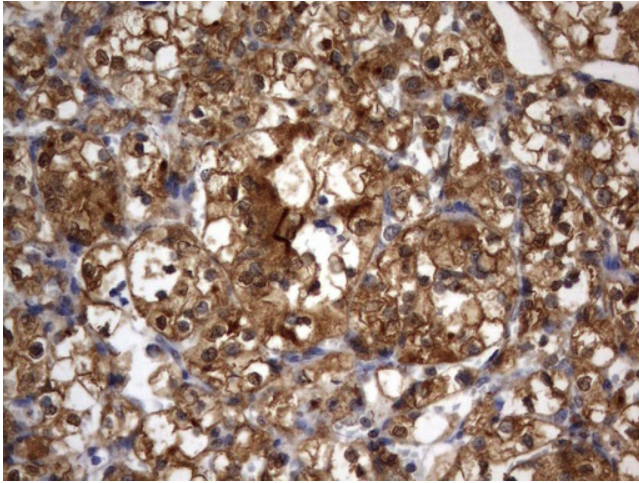
Product images:



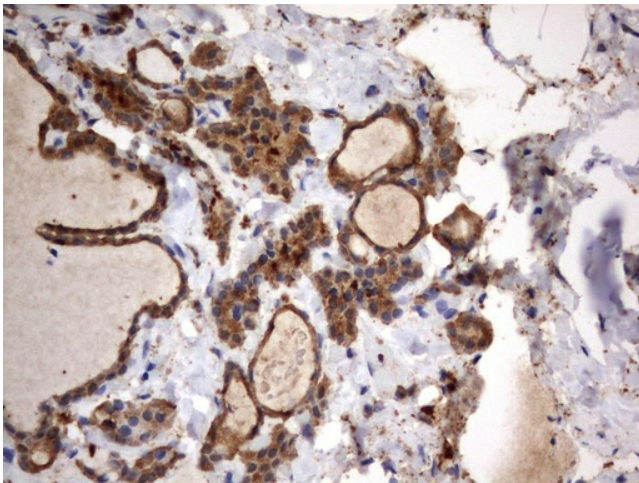
Immunohistochemical staining of paraffin-embedded Human breast tissue using anti-HMBS mouse monoclonal antibody. ([UM800041]; heat-induced epitope retrieval by 10mM citric buffer, pH9.0, 120°C for 3min)



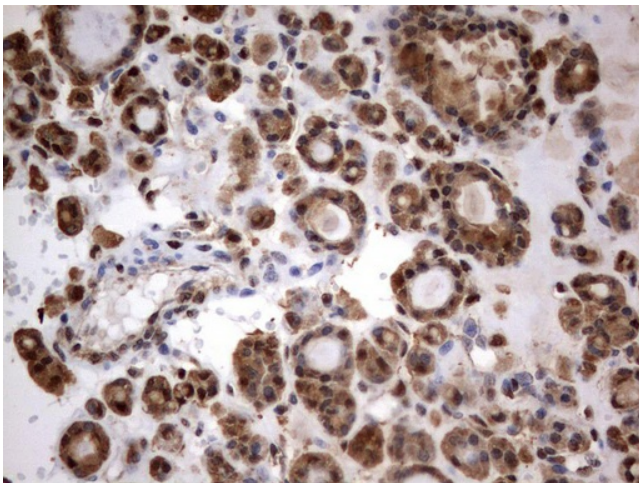
Immunohistochemical staining of paraffin-embedded Human Kidney tissue using anti-HMBS mouse monoclonal antibody. ([UM800041]; heat-induced epitope retrieval by 10mM citric buffer, pH9.0, 120°C for 3min)



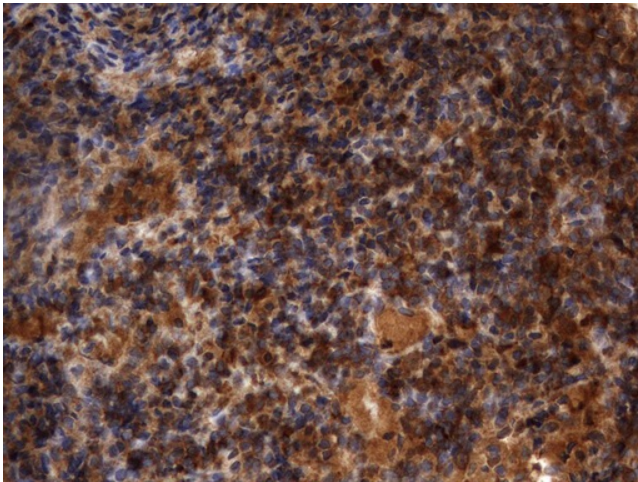
Immunohistochemical staining of paraffin-embedded Carcinoma of Human kidney tissue using anti-HMBS mouse monoclonal antibody. ([UM800041]; heat-induced epitope retrieval by 10mM citric buffer, pH9.0, 120°C for 3min)



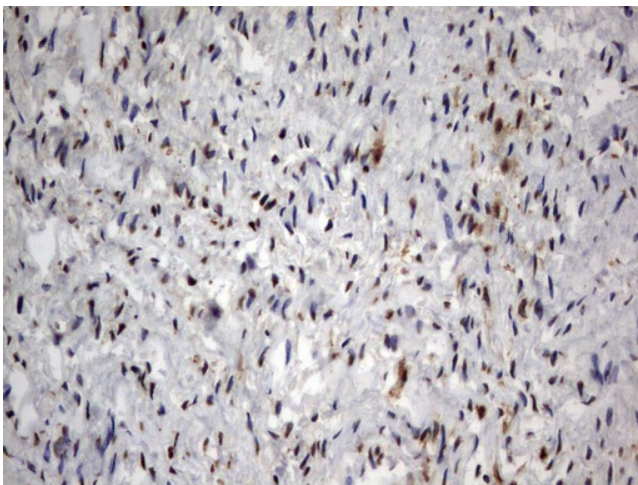
Immunohistochemical staining of paraffin-embedded Human thyroid tissue using anti-HMBS mouse monoclonal antibody. ([UM800041]; heat-induced epitope retrieval by 10mM citric buffer, pH9.0, 120°C for 3min)



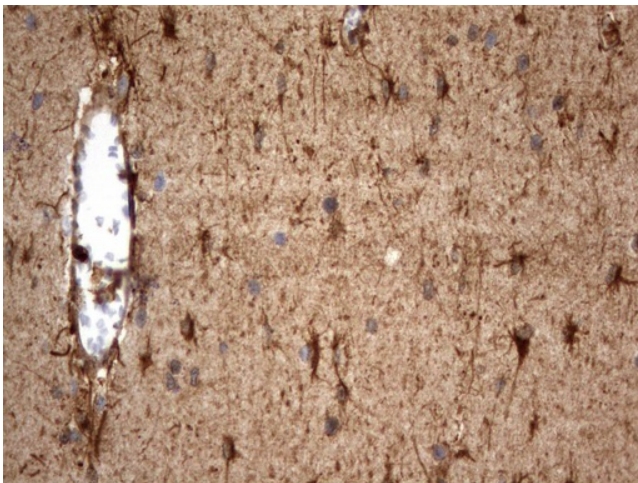
Immunohistochemical staining of paraffin-embedded Carcinoma of Human thyroid tissue using anti-HMBS mouse monoclonal antibody. ([UM800041]; heat-induced epitope retrieval by 10mM citric buffer, pH9.0, 120°C for 3min)



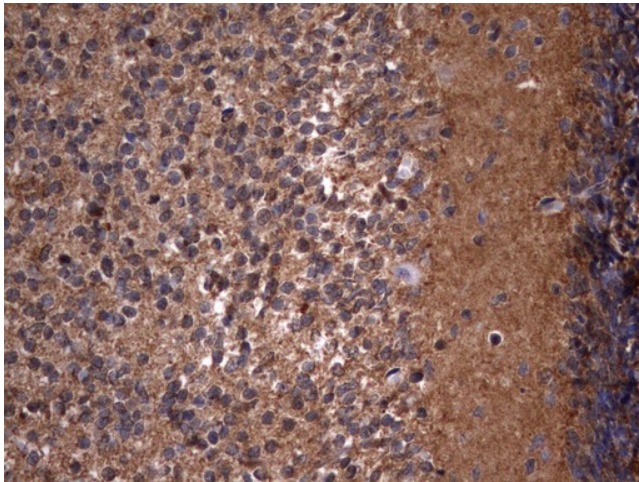
Immunohistochemical staining of paraffin-embedded Human lymph node tissue using anti-HMBS mouse monoclonal antibody. (UM800041); heat-induced epitope retrieval by 10mM citric buffer, pH9.0, 120°C for 3min)



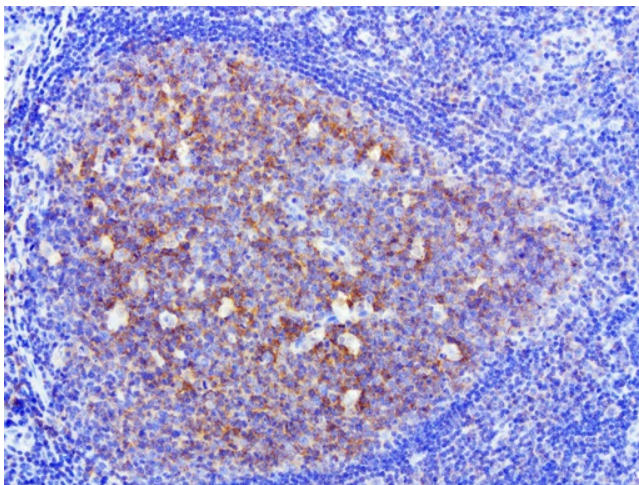
Immunohistochemical staining of paraffin-embedded Human muscle tissue using anti-HMBS mouse monoclonal antibody. (UM800041); heat-induced epitope retrieval by 10mM citric buffer, pH9.0, 120°C for 3min)



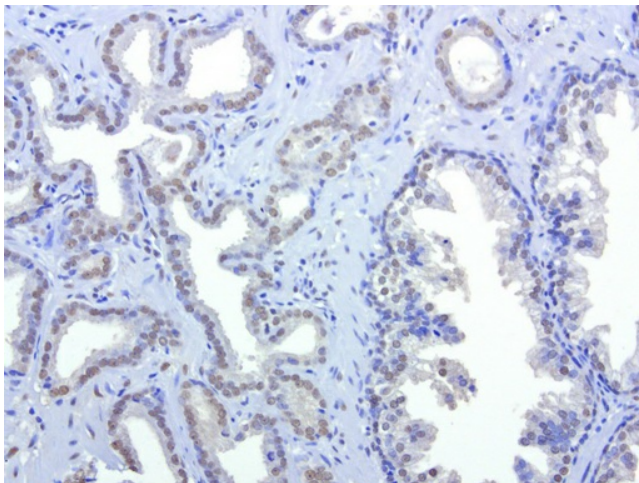
Immunohistochemical staining of paraffin-embedded Human embryonic brain cortex tissue using anti-HMBS mouse monoclonal antibody. (UM800041); heat-induced epitope retrieval by 10mM citric buffer, pH9.0, 120°C for 3min)



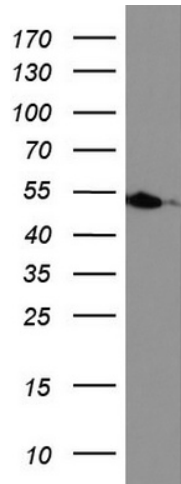
Immunohistochemical staining of paraffin-embedded Human embryonic cerebellum using anti-HMBS mouse monoclonal antibody. ([UM800041]; heat-induced epitope retrieval by 10mM citric buffer, pH9.0, 120°C for 3min)



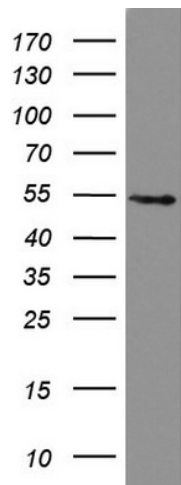
Immunohistochemical staining of paraffin-embedded human tonsil using anti-HMBS clone UMAB144 mouse monoclonal antibody at 1:400 with Polink2 Broad HRP DAB detection kit ([UM800041]); heat-induced epitope retrieval with citrate buffer, pH6.0 at 95-100°C. Strong cytoplasmic and membrane staining is seen on tonsil germinal and non-germinal centers. Some weak nuclear stain was also observed.



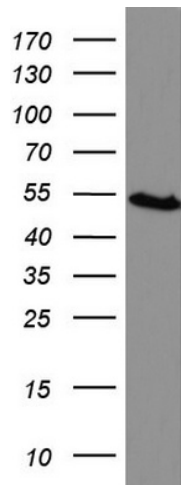
Immunohistochemical staining of paraffin-embedded human prostate cancer using anti-HMBS clone UMAB144 mouse monoclonal antibody at 1:400 with Polink2 Broad HRP DAB detection kit ([UM800041]); heat-induced epitope retrieval with citrate buffer, pH6.0 at 95-100°C. Weak nuclear staining is seen on tumor cells.



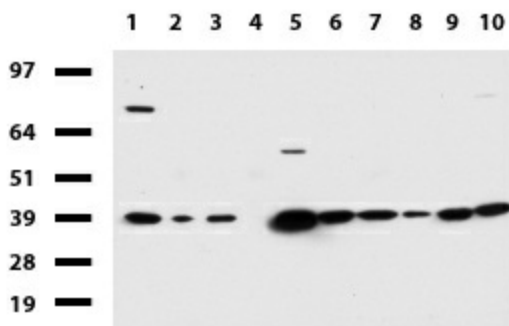
Western blot analysis of HT29 cell lysate (35ug) by using anti-HMBS monoclonal antibody.



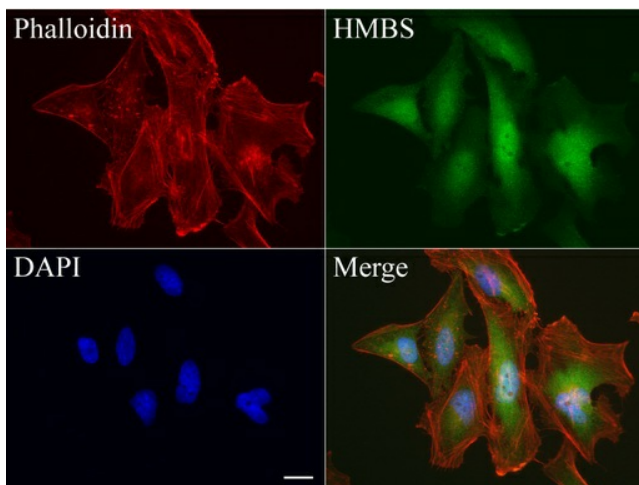
Western blot analysis of K562 cell lysate (35ug) by using anti-HMBS monoclonal antibody.



Western blot analysis of KM12 cell lysate (35ug) by using anti-HMBS monoclonal antibody.



Western blot of human tissue lysates (15ug) from 10 different tissues (1: Testis, 2: Omentum, 3: Uterus, 4: Breast, 5: Brain, 6: Liver, 7: Ovary, 8: Thyroid, 9: Colon, 10: Spleen). Diluatiion: 1:500.



Immunofluorescent staining of HeLa cells using anti-HMBS mouse monoclonal antibody ([UM800041], green, 1:50). Actin filaments were labeled with Alexa Fluor® 594 Phalloidin (red), and nuclear with DAPI (blue). Scale bar, 20µm.