

Product datasheet for **UM800033CF**

Ki67 (MKI67) Mouse Monoclonal Antibody [Clone ID: UMAB107]

Product data:

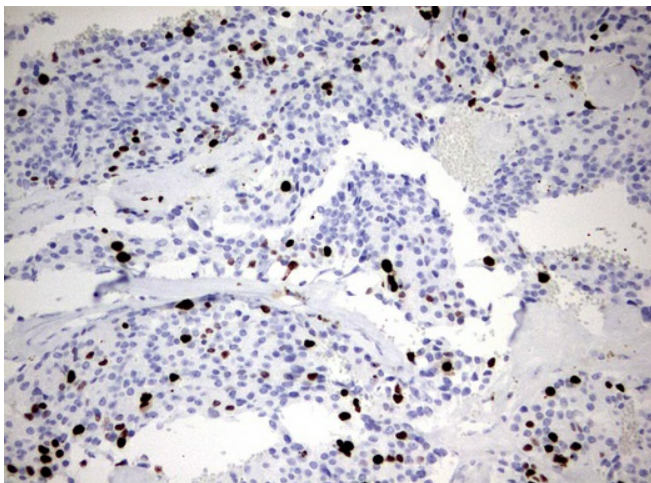
Product Type:	Primary Antibodies
Clone Name:	UMAB107
Applications:	IF, IHC, WB
Recommended Dilution:	IHC: 1:300
Reactivity:	Human
Host:	Mouse
Isotype:	IgG2a
Clonality:	Monoclonal
Immunogen:	Human recombinant protein fragment corresponding to amino acids 1160-1493 of human MKI67 (NP_002408) produced in E.coli.
Formulation:	Lyophilized powder (original buffer 1X PBS, pH 7.3, 8% trehalose)
Reconstitution Method:	For reconstitution, we recommend adding 100uL distilled water to a final antibody concentration of about 1 mg/mL. To use this carrier-free antibody for conjugation experiment, we strongly recommend performing another round of desalting process. (OriGene recommends Zeba Spin Desalting Columns, 7KMWCO from Thermo Scientific)
Purification:	Purified from mouse ascites fluids or tissue culture supernatant by affinity chromatography (protein A/G)
Conjugation:	Unconjugated
Storage:	Store at -20°C as received.
Stability:	Stable for 12 months from date of receipt.
Gene Name:	marker of proliferation Ki-67
Database Link:	NP_002408 Entrez Gene 4288 Human P46013
Background:	This gene encodes a nuclear protein that is associated with and may be necessary for cellular proliferation. Alternatively spliced transcript variants have been described. A related pseudogene exists on chromosome X. [provided by RefSeq, Mar 2009]
Synonyms:	KIA; MIB-; MIB-1; PPP1R105



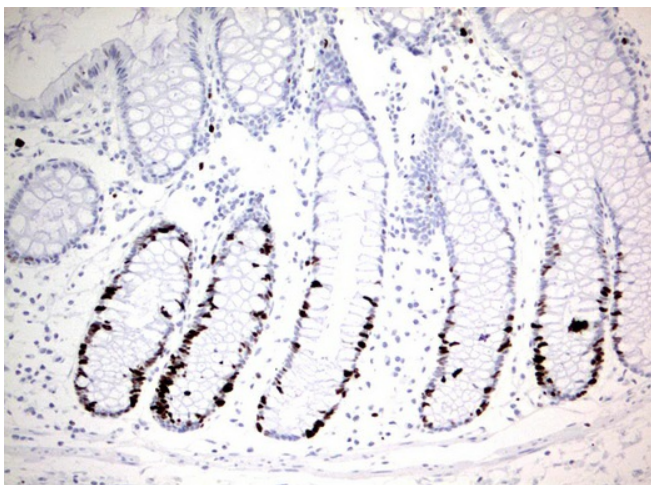
[View online »](#)

Protein Families: Druggable Genome, ES Cell Differentiation/IPS

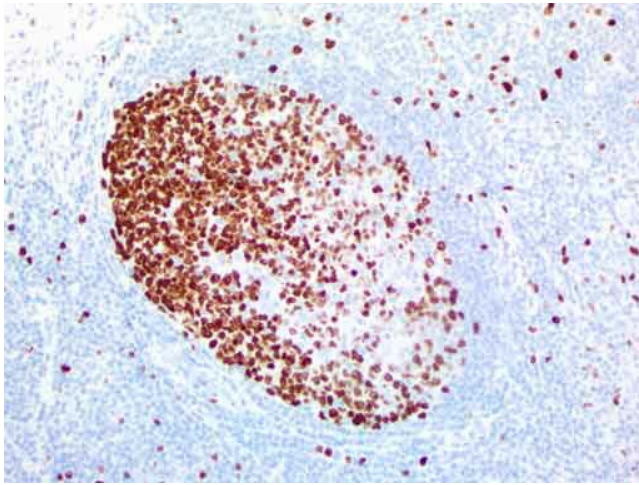
Product images:



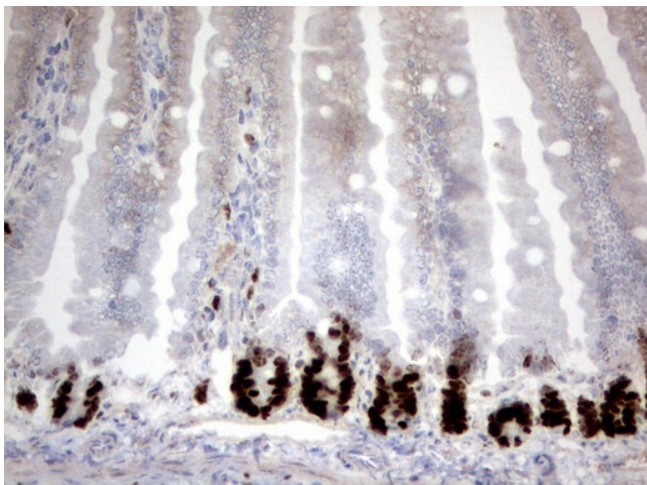
Immunohistochemical staining of paraffin-embedded Adenocarcinoma of Human breast tissue using anti-MKI67 mouse monoclonal antibody. ([UM800033]; heat-induced epitope retrieval by 10mM citric buffer, pH9.0, 120°C for 3min)



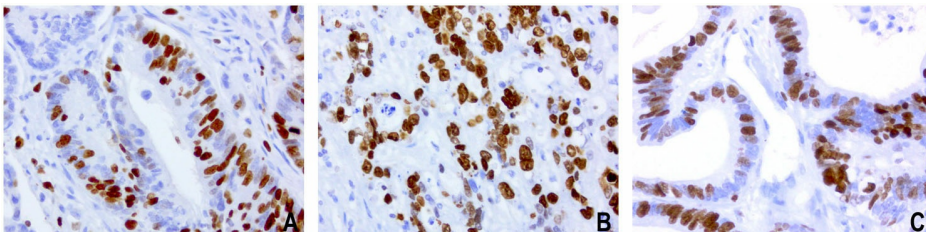
Immunohistochemical staining of paraffin-embedded Human colon tissue using anti-MKI67 mouse monoclonal antibody. ([UM800033]; heat-induced epitope retrieval by 10mM citric buffer, pH9.0, 120°C for 3min)



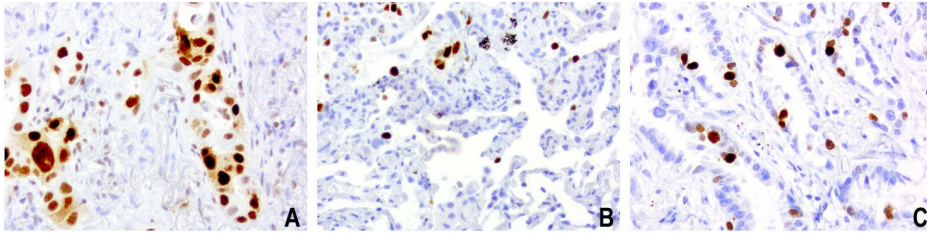
Immunohistochemical staining of paraffin-embedded normal human tonsil tissue using anti-MKI67 mouse monoclonal antibody. ([UM800033] at 1ug/ml for 30 min at RT; heat-induced epitope retrieval by 10mM citric buffer, pH6.0, 100°C for 20min;)



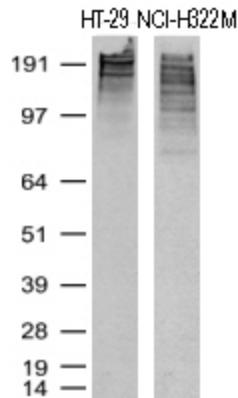
Immunohistochemical staining of paraffin-embedded mouse colon tissue using anti-MKI67 mouse monoclonal antibody. ([UM800033]; heat-induced epitope retrieval by 10mM citric buffer, pH9.0, 120°C for 3min)



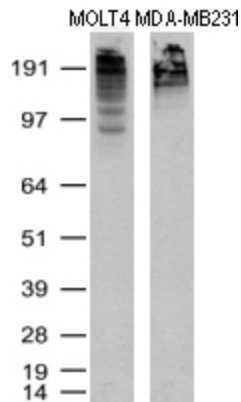
Immunohistochemical staining of paraffin-embedded of 3 human colon cancer using anti-Ki67 clone UMAB107 mouse monoclonal antibody at 1:1000 dilution of 0.5mg/mL and detection with Polink2 Broad HRP DAB. [UM800033] requires heat-induced epitope retrieval with Citrate pH6.0 in a pressure chamber/cooker high 3min. The composite image of 3 human colon cancer all show strong nuclear staining in the tumor cells.



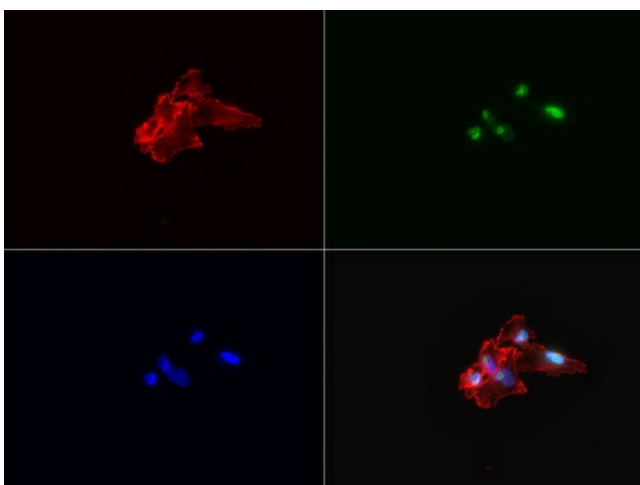
Immunohistochemical staining of paraffin-embedded of 3 human lung cancer using anti-Ki67 clone UMAB107 mouse monoclonal antibody at 1:1000 dilution of 0.5mg/mL and detection with Polink2 Broad HRP DAB. [UM800033] requires heat-induced epitope retrieval with Citrate pH6.0 in a pressure chamber/cooker high 3min. The composite image of 3 human lung cancer all show strong nuclear staining in the tumor cells.



Western Blot analysis of HT-29 and NCI-H322M cell lysates (35ug) by using anti-Ki67 monoclonal antibody (Clone UMAB107)



Western Blot analysis of MOLT-4 and MDA-MB231 cell lysates (35ug) by using anti-Ki67 monoclonal antibody (Clone UMAB107)



Immunofluorescent staining of MDA-MB-231 cells using anti-Ki67 mouse monoclonal antibody ([UM800033], green, 1:100). Actin filaments were labeled with TRITC-phalloidin (red), and nuclear with DAPI (blue).