

Product datasheet for **UM800001**

CD20 (MS4A1) Mouse Monoclonal Antibody [Clone ID: UMAB37]

Product data:

Product Type:	Primary Antibodies
Clone Name:	UMAB37
Applications:	IHC
Recommended Dilution:	WB 1:2000, IHC 1:150
Reactivity:	Human
Host:	Mouse
Isotype:	IgG1
Clonality:	Monoclonal
Immunogen:	Full length human recombinant protein of human MS4A1 (NP_068769) produced in HEK293T cell.
Formulation:	PBS (pH 7.3) containing 1% BSA, 50% glycerol and 0.02% sodium azide.
Concentration:	0.5~1.0 mg/ml (Lot Dependent)
Purification:	Purified from mouse ascites fluids or tissue culture supernatant by affinity chromatography (protein A/G)
Conjugation:	Unconjugated
Storage:	Store at -20°C as received.
Stability:	Stable for 12 months from date of receipt.
Predicted Protein Size:	32.9 kDa
Gene Name:	membrane spanning 4-domains A1
Database Link:	NP_068769 Entrez Gene 931 Human P11836



[View online »](#)

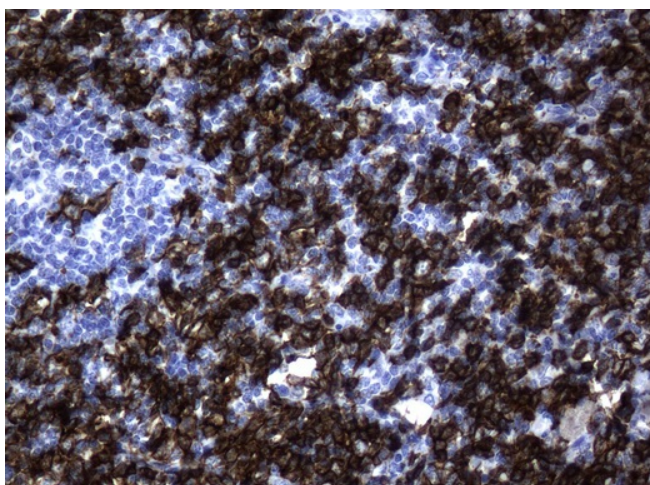
Background: This gene encodes a member of the membrane-spanning 4A gene family. Members of this nascent protein family are characterized by common structural features and similar intron/exon splice boundaries and display unique expression patterns among hematopoietic cells and nonlymphoid tissues. This gene encodes a B-lymphocyte surface molecule which plays a role in the development and differentiation of B-cells into plasma cells. This family member is localized to 11q12, among a cluster of family members. Alternative splicing of this gene results in two transcript variants which encode the same protein. [provided by RefSeq]

Synonyms: B1; Bp35; CD20; CVID5; FMC7; LEU-16; MS4A2; S7

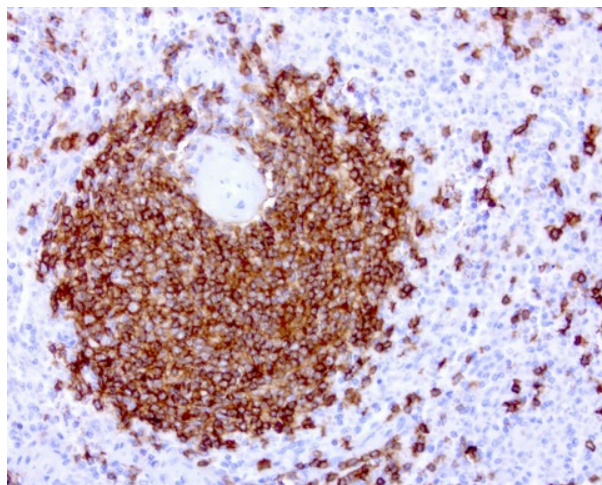
Protein Families: Druggable Genome, Transmembrane

Protein Pathways: Hematopoietic cell lineage

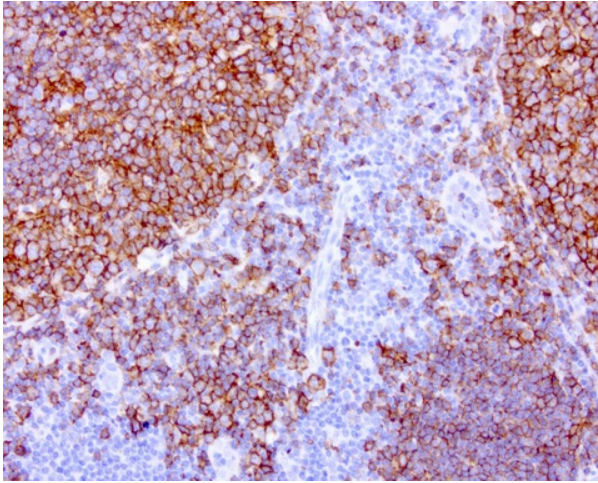
Product images:



Immunohistochemical staining of paraffin-embedded lymph node tissue using anti-CD20 mouse monoclonal antibody. (Clone UMAB37, Dilution 1:100; heat-induced epitope retrieval by 10mM citric buffer, pH6.0, 120°C for 3min)



Immunohistochemical staining of paraffin-embedded human spleen using anti-CD20 mouse monoclonal antibody at 1:200 dilution of 1.0 mg/mL using Polink2 Broad HRP DAB for detection. UM800001 requires HIER with with citrate pH6.0 at 110°C for 3min using pressure chamber/cooker. The spleen shows strong membrane and cytoplasmic staining in red and white pulp cells.



Immunohistochemical staining of paraffin-embedded human tonsil using anti-CD20 mouse monoclonal antibody at 1:200 dilution of 1.0 mg/mL using Polink2 Broad HRP DAB for detection. UM800001 requires HIER with with citrate pH6.0 at 110°C for 3min using pressure chamber/cooker. The tonsil shows strong membrane and cytoplasmic staining in the germinal center of the tonsil and some positive cells in the non-germinal center.