

Product datasheet for **UM500079CF**

Synaptophysin (SYP) Mouse Monoclonal Antibody [Clone ID: UMAB112]

Product data:

Product Type:	Primary Antibodies
Clone Name:	UMAB112
Applications:	10k-ChIP, IF, IHC, WB
Recommended Dilution:	IHC 1:100~200
Reactivity:	Human, Mouse, Rat
Host:	Mouse
Isotype:	IgG2b
Clonality:	Monoclonal
Immunogen:	Full length human recombinant protein of human SYP(NP_003170) produced in HEK293T cell.
Formulation:	Lyophilized powder (original buffer 1X PBS, pH 7.3, 8% trehalose)
Reconstitution Method:	For reconstitution, we recommend adding 100uL distilled water to a final antibody concentration of about 1 mg/mL. To use this carrier-free antibody for conjugation experiment, we strongly recommend performing another round of desalting process. (OriGene recommends Zeba Spin Desalting Columns, 7KMWCO from Thermo Scientific)
Purification:	Purified from mouse ascites fluids or tissue culture supernatant by affinity chromatography (protein A/G)
Conjugation:	Unconjugated
Storage:	Store at -20°C as received.
Stability:	Stable for 12 months from date of receipt.
Predicted Protein Size:	33.7 kDa
Gene Name:	synaptophysin
Database Link:	NP_003170 Entrez Gene 20977 Mouse Entrez Gene 24804 Rat Entrez Gene 6855 Human P08247



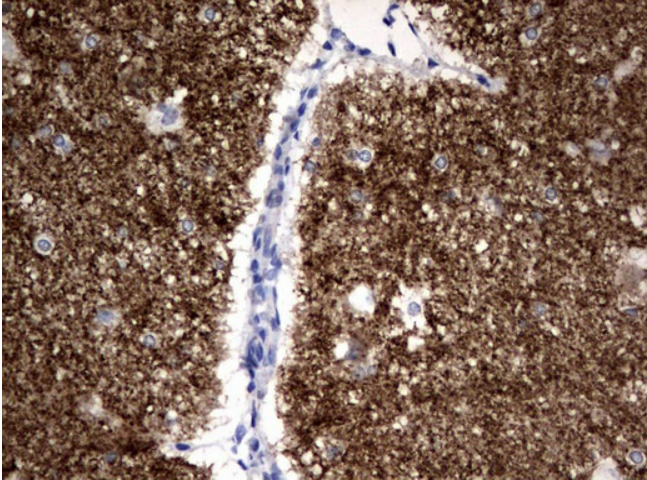
[View online »](#)

Background: This gene encodes an integral membrane protein of small synaptic vesicles in brain and endocrine cells. The protein also binds cholesterol and is thought to direct targeting of vesicle-associated membrane protein 2 (synaptobrevin) to intracellular compartments. Mutations in this gene are associated with X-linked mental retardation (XLMR). [provided by RefSeq, Aug

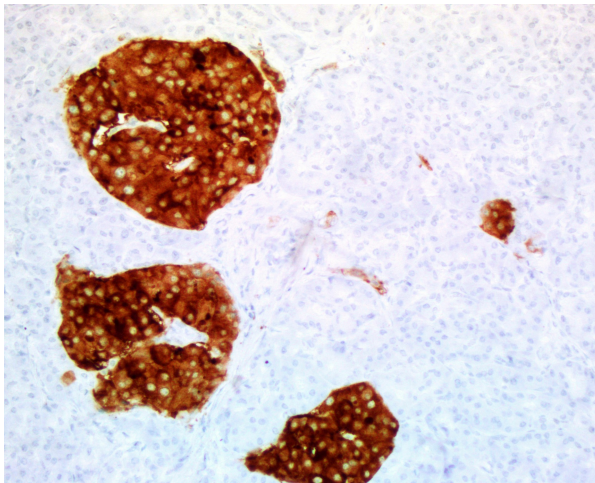
Synonyms: MRX96; MRXSYP

Protein Families: Secreted Protein, Transmembrane

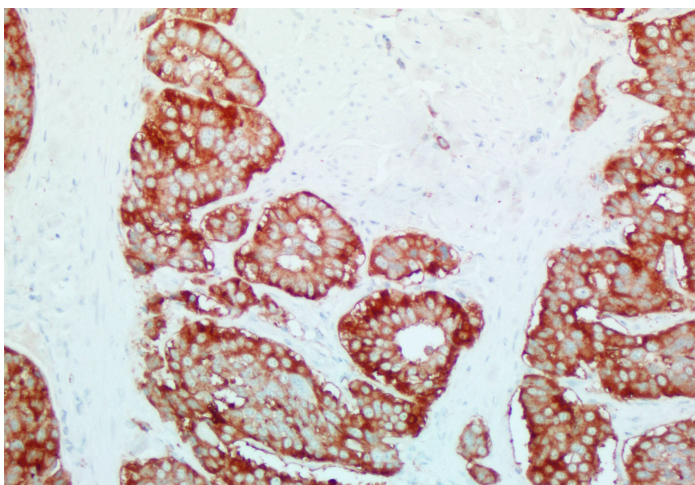
Product images:



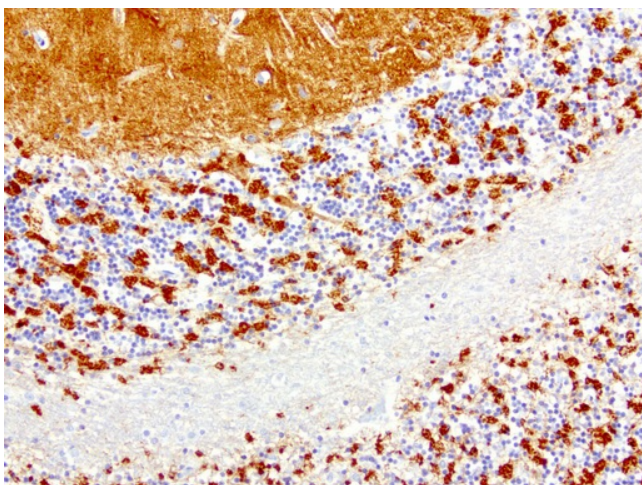
Immunohistochemical staining of paraffin-embedded Human adult brain tissue using anti-SYP mouse monoclonal antibody. ([UM500079]; heat-induced epitope retrieval by 10mM citric buffer, pH6.0, 120°C for 3min)



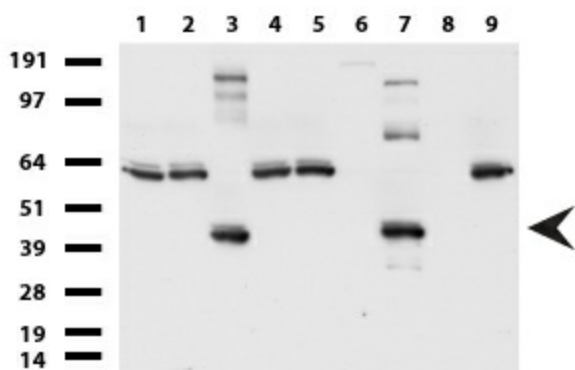
Immunohistochemical staining of paraffin-embedded human pancreas using anti-SYP clone UMAB112 mouse monoclonal antibody at 1:200 dilution of 0.4mg/mL detection with Polink2 Broad HRP DAB. [UM500079] requires heat-induced epitope retrieval with Citrate pH6.0 at 95-100C 20 minutes. The image shows strong membranous and cytoplasmic staining in the Islets of Langerhans with no staining in the glandular cells.



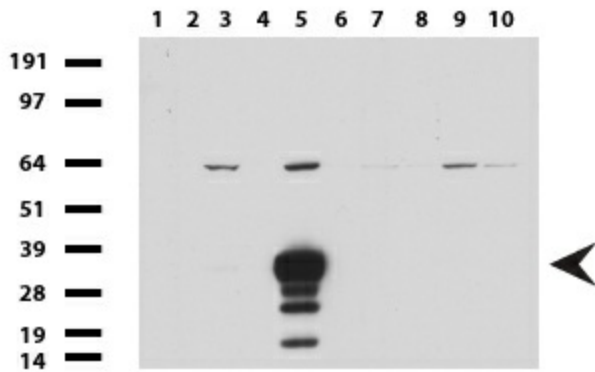
Immunohistochemical staining of paraffin-embedded human carcinoid tumor using anti-SYP clone UMAB112 mouse monoclonal antibody at 1:200 dilution of 0.4mg/mL and detection with Polink2 Broad HRP DAB. [UM500079] requires heat-induced epitope retrieval with Citrate pH6.0 at 95-100C 20 minutes. The image shows strong membranous and cytoplasmic staining in the tumor cells with surrounding stroma negative.



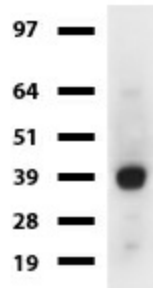
Immunohistochemical staining of paraffin-embedded human brain using anti-SYP clone UMAB112 mouse monoclonal antibody at 1:800 dilution 1mg/mL and detection with Polink2 Broad HRP DAB. [UM500079] requires heat-induced epitope retrieval with citrate pH6.0 in a pressure cooker for 3 minutes at 110C. The image shows strong membranous and cytoplasmic staining in granular layer and purkinje cells.



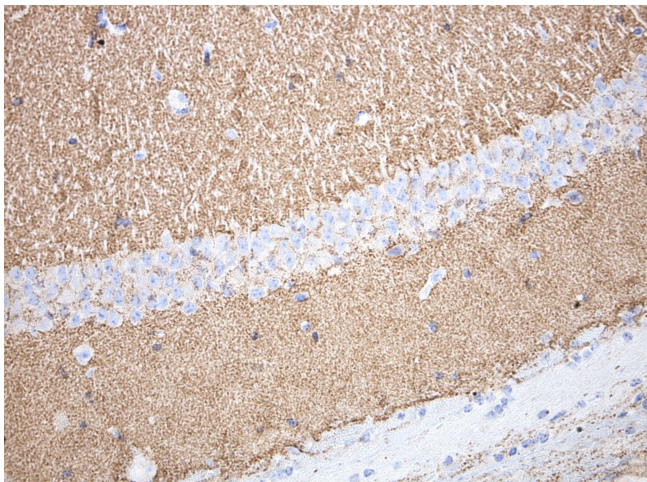
Western blot of cell lysates (35ug) from 9 different cell lines (1: HepG2, 2: HeLa, 3: SV-T2, 4: A549, 5: COS7, 6: Jurkat, 7: PC-12, 8: MDCK, 9: MCF7).



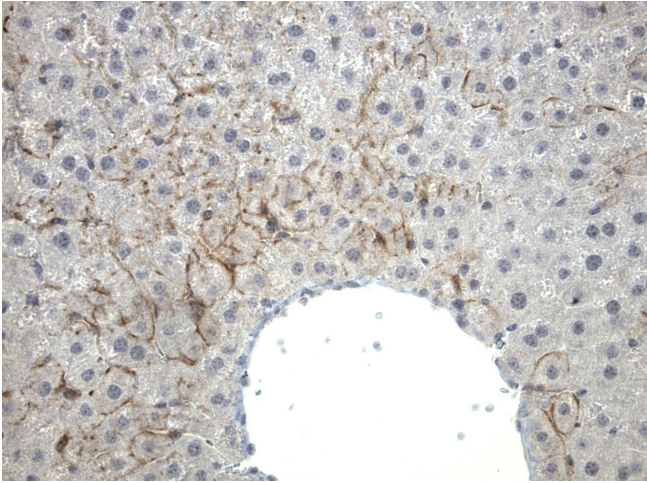
Western blot of human tissue lysates (15ug) from 10 different tissues (1: Testis, 2: Omentum, 3: Uterus, 4: Breast, 5: Brain, 6: Liver, 7: Ovary, 8: Thyroid, 9: Colon, 10: Spleen). Dilution: 1:500.



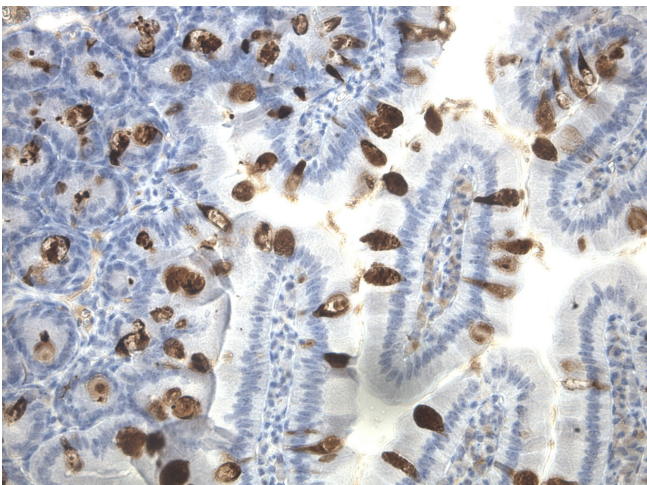
Western blot of mouse tissue lysates (20ug) from Brain. Primary antibody dilution: 1:500. Secondary antibody dilution: Mouse TrueBlot® Ultra (1:1000).



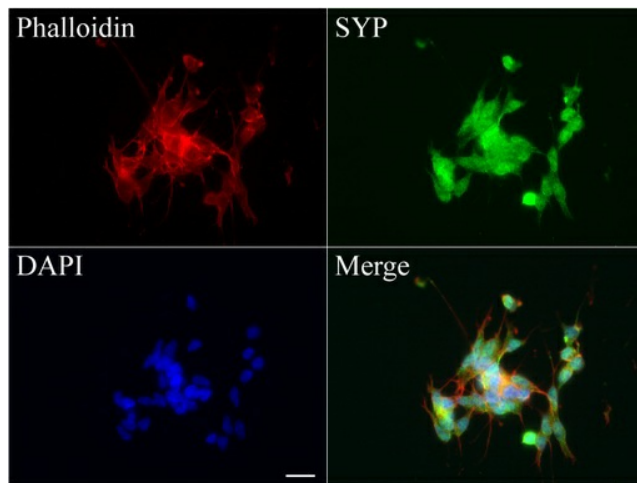
Immunohistochemical staining of paraffin-embedded mouse brain using mouse anti-SYP clone UMAB112 mouse monoclonal antibody. HIER TEE buffer ([B21-100]) (pH9) at 110C for 10 min, [UM500079] (1:100). Detection was done with Klear Mouse (C/N [D52-18]) DAB Chromogen Kit.



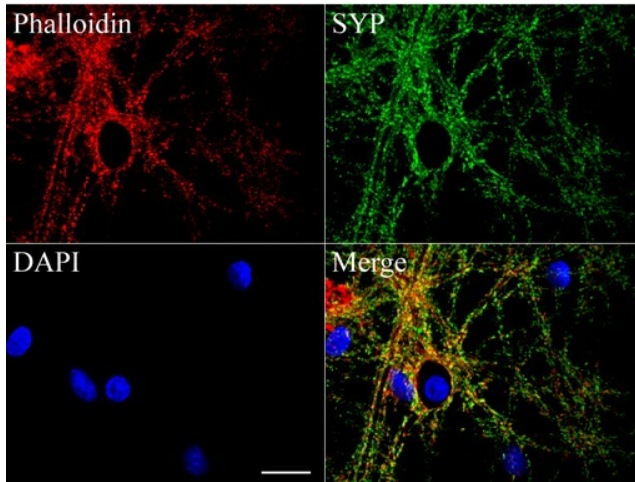
Immunohistochemical staining of paraffin-embedded mouse liver using mouse anti-SYP clone UMAB112 mouse monoclonal antibody. HIER TEE buffer ([B21-100]) (pH9) at 110C for 10 min, [UM500079] (1:100). Detection was done with Klear Mouse (C/N [D52-18]) DAB Chromogen Kit.



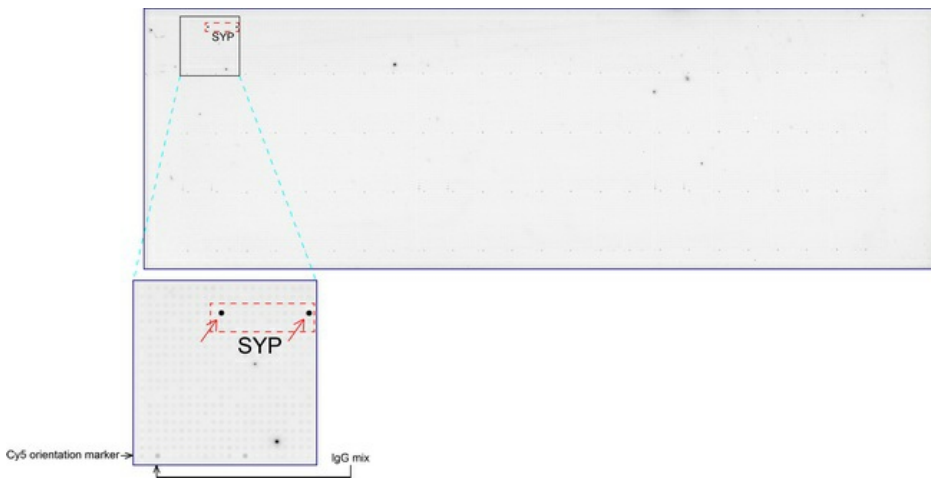
Immunohistochemical staining of paraffin-embedded mouse small intestine using mouse anti-SYP clone UMAB112 mouse monoclonal antibody. HIER TEE buffer ([B21-100]) (pH9) at 110C for 10 min, [UM500079] (1:100). Detection was done with Klear Mouse (C/N [D52-18]) DAB Chromogen Kit.



Immunofluorescent staining of SH-SY5Y cells using anti-SYP mouse monoclonal antibody ([UM500079], green, 1:100). Actin filaments were labeled with Alexa Fluor® 594 Phalloidin (red), and nuclear with DAPI (blue). Scale bar, 20µm.



Confocal immunofluorescence image of primary rat neurons labeled with anti-SYP mouse monoclonal antibody ([UM500079], green, 1:100). Actin filaments were labeled with TRITC-Phalloidin (red), and nuclear with DAPI (blue). Scale bar, 20um.



OriGene overexpression protein microarray chip was immunostained with UltraMAB anti-SYP mouse monoclonal antibody ([UM500079]). The positive reactive proteins are highlighted with two red arrows in the enlarged subarray. All the positive controls spotted in this subarray are also labeled for clarification.