

## Product datasheet for **UM500057**

### Syntenin (SDCBP) Mouse Monoclonal Antibody [Clone ID: UMAB69]

#### Product data:

Product Type:	Primary Antibodies
Clone Name:	UMAB69
Applications:	10k-ChIP, IF, IHC, WB
Recommended Dilution:	WB 1:500, IHC 1:100
Reactivity:	Human, Mouse, Rat
Host:	Mouse
Isotype:	IgG2b
Clonality:	Monoclonal
Immunogen:	Full length human recombinant protein of human SDCBP(NP_005616) produced in HEK293T cell.
Formulation:	PBS (pH 7.3) containing 1% BSA, 50% glycerol and 0.02% sodium azide.
Concentration:	0.5~1.0 mg/ml (Lot Dependent)
Purification:	Purified from mouse ascites fluids or tissue culture supernatant by affinity chromatography (protein A/G)
Conjugation:	Unconjugated
Storage:	Store at -20°C as received.
Stability:	Stable for 12 months from date of receipt.
Predicted Protein Size:	32.3 kDa
Gene Name:	syndecan binding protein
Database Link:	<a href="#">NP_005616</a> <a href="#">Entrez Gene 53378 Mouse</a> <a href="#">Entrez Gene 83841 Rat</a> <a href="#">Entrez Gene 6386 Human</a> <a href="#">O00560</a>



[View online »](#)

**Background:**

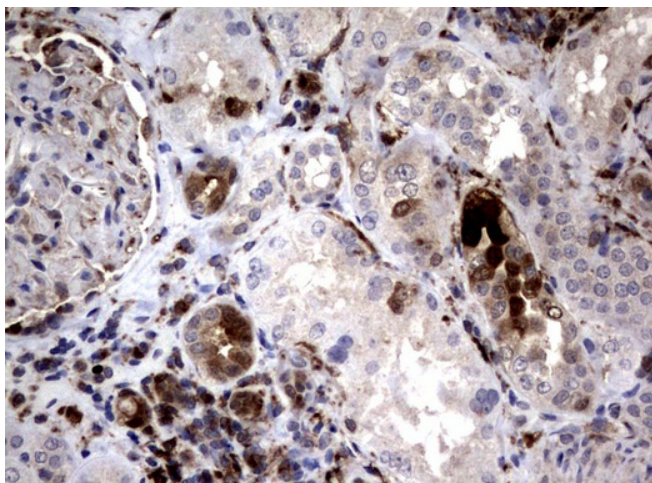
The protein encoded by this gene was initially identified as a molecule linking syndecan-mediated signaling to the cytoskeleton. The syntenin protein contains tandemly repeated PDZ domains that bind the cytoplasmic, C-terminal domains of a variety of transmembrane proteins. This protein may also affect cytoskeletal-membrane organization, cell adhesion, protein trafficking, and the activation of transcription factors. The protein is primarily localized to membrane-associated adherens junctions and focal adhesions but is also found at the endoplasmic reticulum and nucleus. Alternative splicing results in multiple transcript variants encoding different isoforms. [provided by RefSeq, Jul 2008]

**Synonyms:**

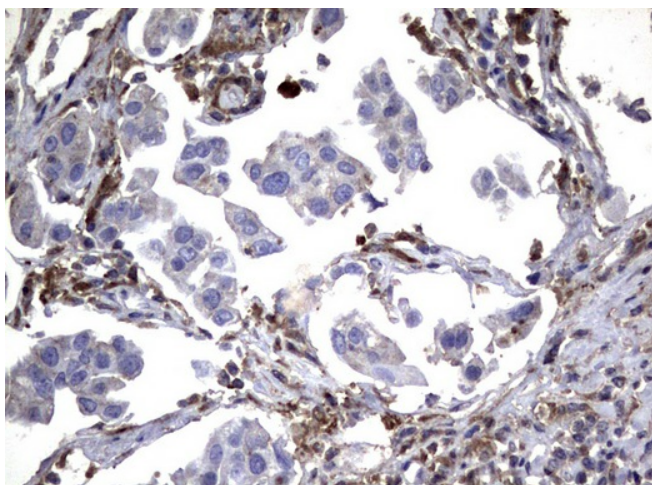
MDA-9; MDA9; ST1; SYCL; TACIP18

**Protein Families:**

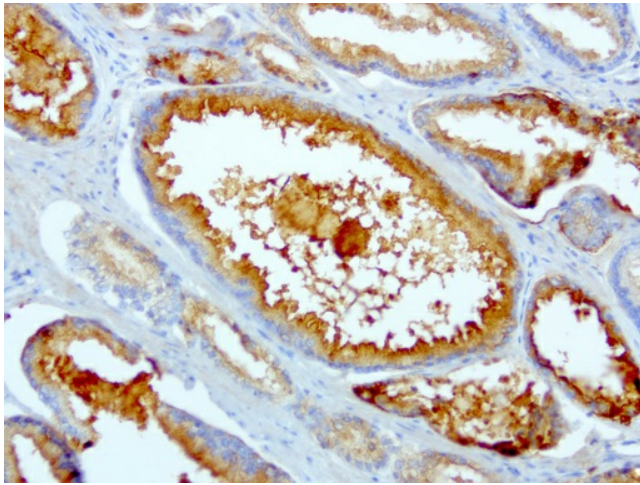
Druggable Genome, Transmembrane

**Product images:**

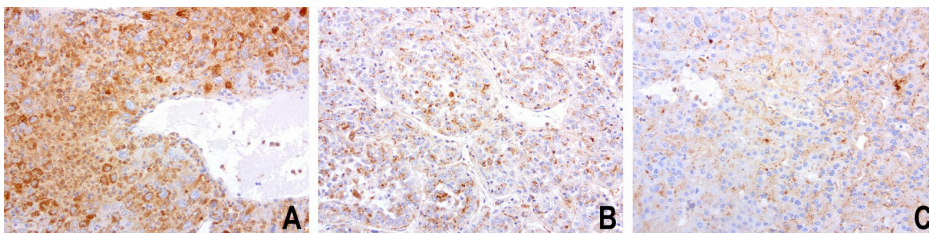
Immunohistochemical staining of paraffin-embedded Human Kidney tissue using anti-SDCBP mouse monoclonal antibody. (UM500057; heat-induced epitope retrieval by 10mM citric buffer, pH6.0, 120°C for 3min)



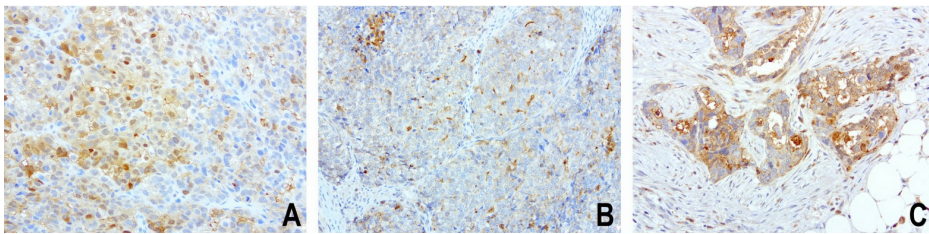
Immunohistochemical staining of paraffin-embedded Carcinoma of Human bladder tissue using anti-SDCBP mouse monoclonal antibody. (UM500057; heat-induced epitope retrieval by 10mM citric buffer, pH6.0, 120°C for 3min)



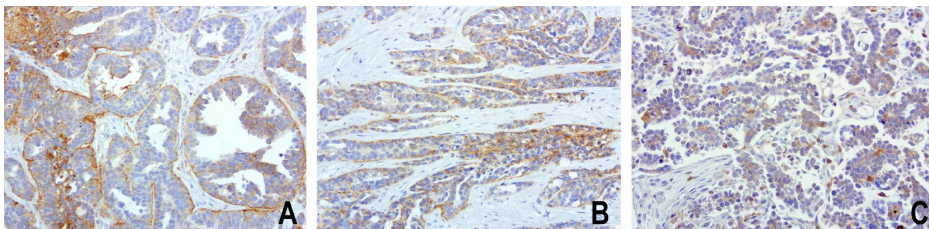
Immunohistochemical staining of paraffin-embedded human prostate cancer using anti-SDCBP clone UMAB69 mouse monoclonal antibody (UM500057) at 1:100 with Polink2 Broad HRP DAB detection kit; heat-induced epitope retrieval with GBI Citrate pH6.0 HIER buffer using pressure chamber for 3 minutes at 110C. Membrane and cytoplasmic staining is seen in tumor cells.



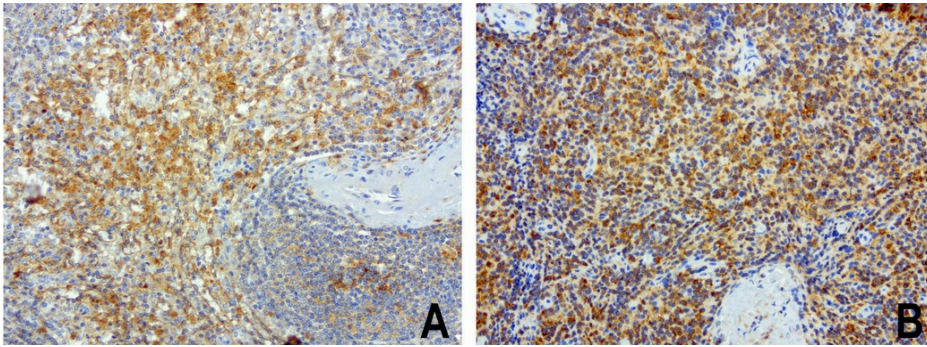
Immunohistochemical staining of paraffin-embedded composite of 3 human liver cancer cases using anti-SDCBP clone UMAB69 mouse monoclonal antibody (UM500057) at 1:100 with Polink2 Broad HRP DAB detection kit; heat-induced epitope retrieval with GBI Citrate pH6.0 HIER buffer using pressure chamber for 3 minutes at 110C. Membrane and cytoplasmic staining is seen in tumor cells with various intensity.



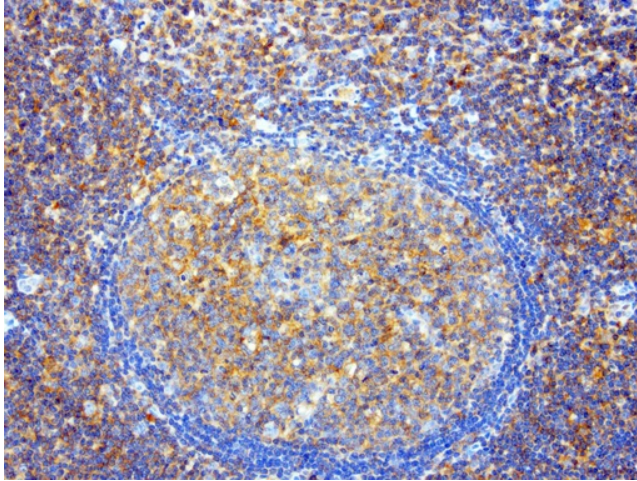
Immunohistochemical staining of paraffin-embedded composite of 3 human endometrial cancer cases using anti-SDCBP clone UMAB69 mouse monoclonal antibody (UM500057) at 1:100 with Polink2 Broad HRP DAB detection kit; heat-induced epitope retrieval with GBI Citrate pH6.0 HIER buffer using pressure chamber for 3 minutes at 110C. Membrane and cytoplasmic staining is seen in tumor cells with various intensity.



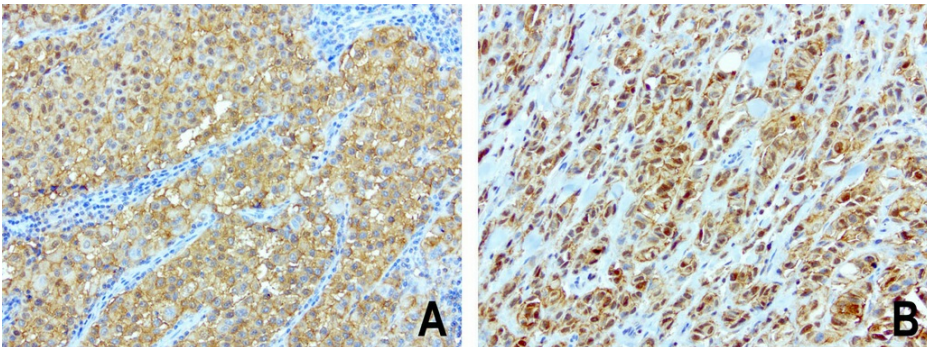
Immunohistochemical staining of paraffin-embedded composite of 3 human ovarian cancer cases using anti-SDCBP clone UMAB69 mouse monoclonal antibody (UM500057) at 1:100 with Polink2 Broad HRP DAB detection kit; heat-induced epitope retrieval with GBI Citrate pH6.0 HIER buffer using pressure chamber for 3 minutes at 110C. Membrane and cytoplasmic staining is seen in tumor cells with various intensity.



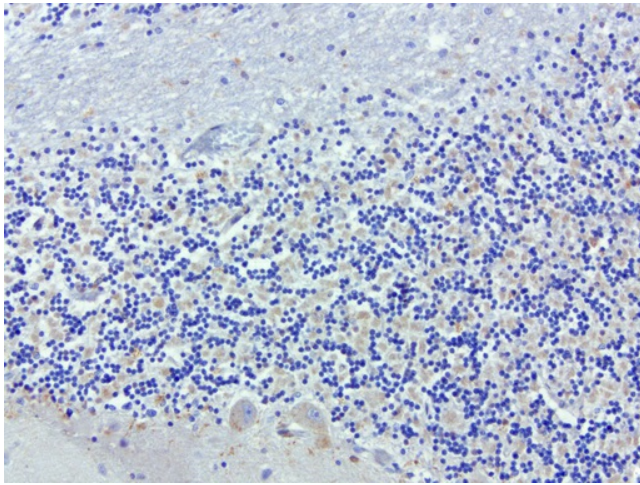
Immunohistochemical staining of paraffin-embedded composite of 2 human spleen cases using anti-SDCBP clone UMAB69 mouse monoclonal antibody (UM500057) at 1:100 with Polink2 Broad HRP DAB detection kit; heat-induced epitope retrieval with GBI Citrate pH6.0 HIER buffer using pressure chamber for 3 minutes at 110C. Membrane and cytoplasmic staining is seen in the cells of red pulp and white pulp.



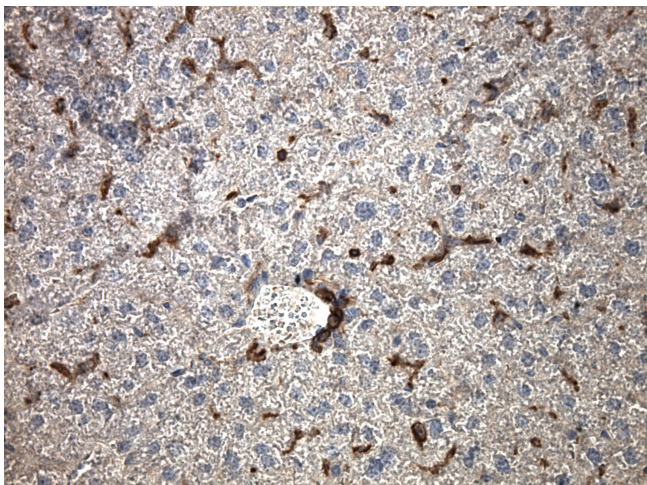
Immunohistochemical staining of paraffin-embedded tonsil using anti-SDCBP clone UMAB69 mouse monoclonal antibody (UM500057) at 1:100 with Polink2 Broad HRP DAB detection kit; heat-induced epitope retrieval with GBI Citrate pH6.0 HIER buffer using pressure chamber for 3 minutes at 110C. Membrane and cytoplasmic staining is seen in germinal and non germinal center of the the tonsil.



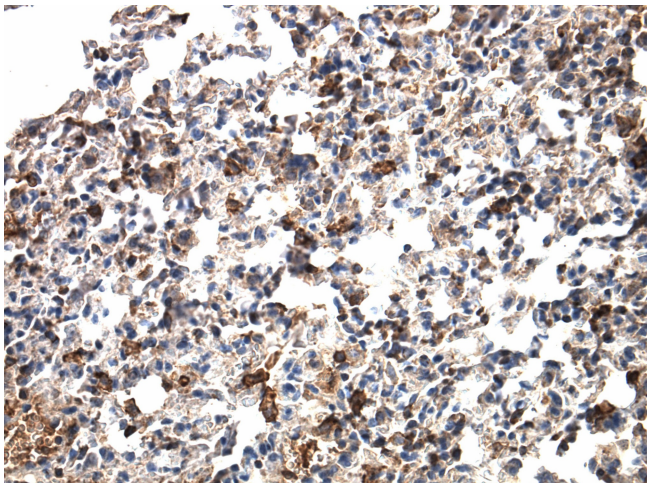
Immunohistochemical staining of paraffin-embedded composite of 2 human melanoma cases using anti-SDCBP clone UMAB69 mouse monoclonal antibody (UM500057) at 1:100 with Polink2 Broad HRP DAB detection kit; heat-induced epitope retrieval with GBI Citrate pH6.0 HIER buffer using pressure chamber for 3 minutes at 110C. Membrane, nuclear, and cytoplasmic staining is seen in tumor cells with various intensity.



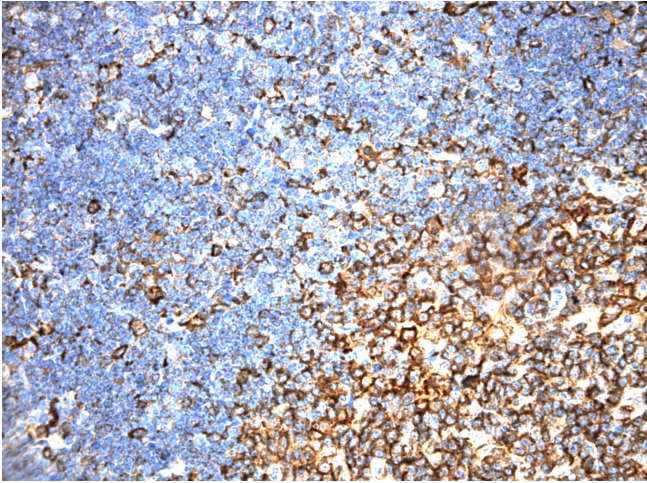
Immunohistochemical staining of paraffin-embedded human brain using anti-SDCBP clone UMAB69 mouse monoclonal antibody (UM500057) at 1:100 with Polink2 Broad HRP DAB detection kit; heat-induced epitope retrieval with GBI Citrate pH6.0 HIER buffer using pressure chamber for 3 minutes at 110C. Weak membrane and cytoplasmic staining.



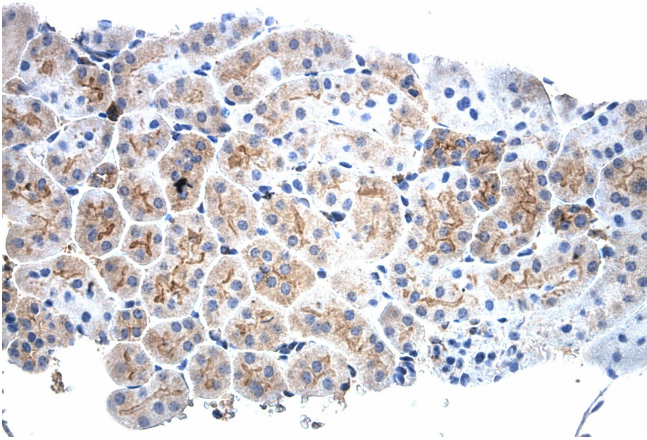
Immunohistochemical staining of paraffin-embedded mouse liver tissue using anti-SDCBP (SYNTINEN) clone UMAB69 mouse monoclonal antibody. HIER TEE buffer pH9 ([B21-100]) at 110C for 10 min, UM500057 (1:100). Detection was done with Klear Mouse (C/N [D52-18]) DAB Kit.



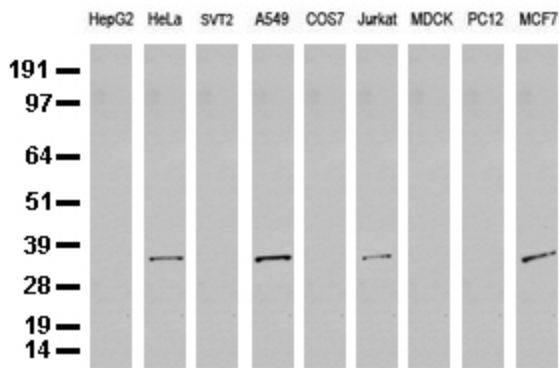
Immunohistochemical staining of paraffin-embedded mouse lung tissue using anti-SDCBP (SYNTINEN) clone UMAB69 mouse monoclonal antibody. HIER TEE buffer pH9 ([B21-100]) at 110C for 10 min, UM500057 (1:100). Detection was done with Klear Mouse (C/N [D52-18]) DAB Kit.



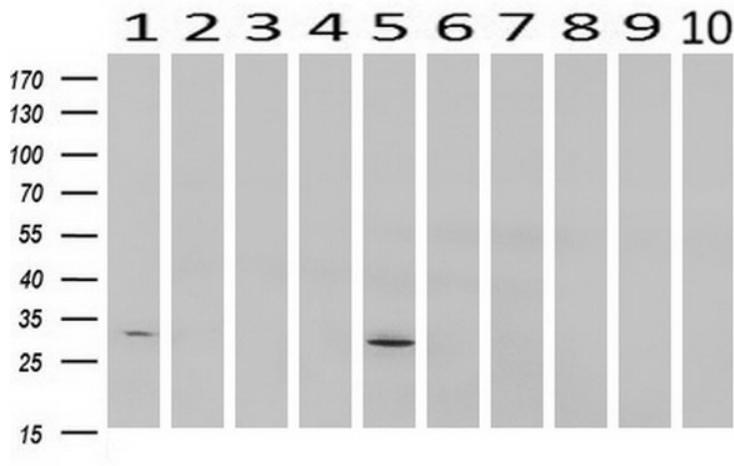
Immunohistochemical staining of paraffin-embedded mouse spleen tissue using anti-SDCBP (SYNTINEN) clone UMAB69 mouse monoclonal antibody. HIER TEE buffer pH9 ([B21-100]) at 110C for 10 min, UM500057 (1:100). Detection was done with Klear Mouse (C/N [D52-18]) DAB Kit.



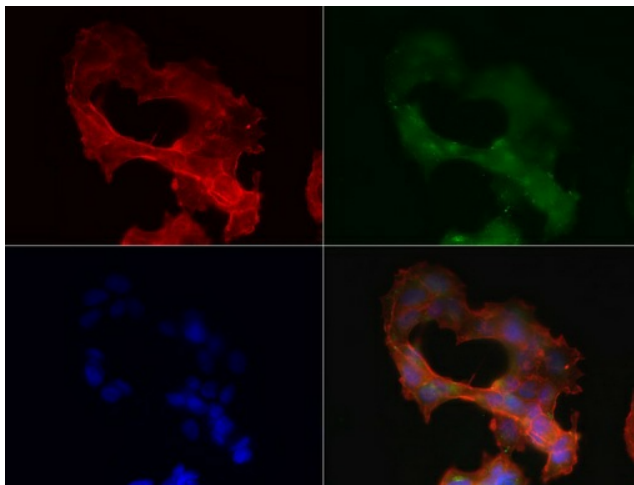
Immunohistochemical staining of paraffin-embedded mouse kidney tissue using anti-SDCBP (SYNTINEN) clone UMAB69 mouse monoclonal antibody. HIER TEE buffer pH9 ([B21-100]) at 110C for 10 min, UM500057 (1:100). Detection was done with Klear Mouse (C/N [D52-18]) DAB Kit.



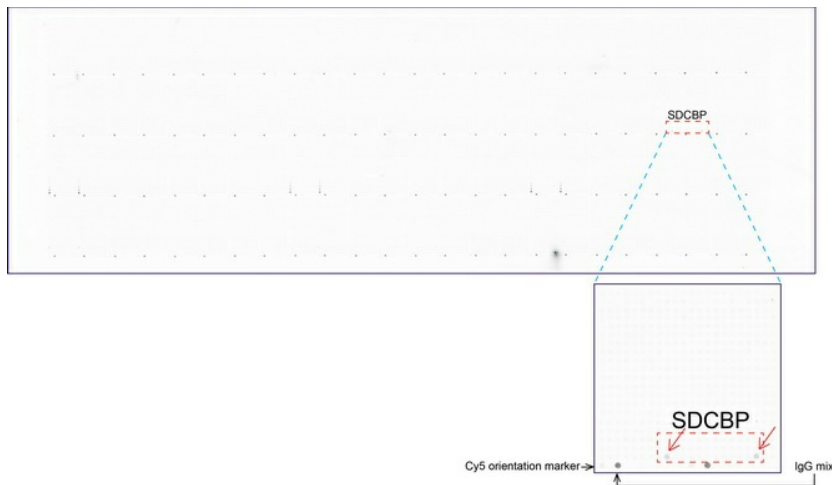
Western blot analysis of extracts (35ug) from 9 different cell lines by using anti-SDCBP monoclonal antibody (Clone UMAB69).



Western blot analysis of extracts (10ug) from 10 Human tissue by using anti-SDCBP monoclonal antibody at 1:200 (1: Testis; 2: Omentum; 3: Uterus; 4: Breast; 5: Brain; 6: Liver; 7: Ovary; 8: Thyroid gland; 9: colon;10: spleen).



Immunofluorescent staining of MCF-7 cells using anti-SDCBP mouse monoclonal antibody (UM500057, green, 1:50). Actin filaments were labeled with TRITC-phalloidin (red), and nuclear with DAPI (blue).



OriGene overexpression protein microarray chip was immunostained with UltraMAB anti-SDCBP mouse monoclonal antibody (UM500057). The positive reactive proteins are highlighted with two red arrows in the enlarged subarray. All the positive controls spotted in this subarray are also labeled for clarification.