

Product datasheet for **UM500043CF**

L1CAM Mouse Monoclonal Antibody [Clone ID: UMAB47]

Product data:

Product Type:	Primary Antibodies
Clone Name:	UMAB47
Applications:	10k-ChIP, IF, IHC, WB
Recommended Dilution:	IHC 1:100
Reactivity:	Human, Mouse, Rat
Host:	Mouse
Isotype:	IgG1
Clonality:	Monoclonal
Immunogen:	Full length human recombinant protein of human L1CAM (NP_000416) produced in HEK293T cell.
Formulation:	Lyophilized powder (original buffer 1X PBS, pH 7.3, 8% trehalose)
Reconstitution Method:	For reconstitution, we recommend adding 100uL distilled water to a final antibody concentration of about 1 mg/mL. To use this carrier-free antibody for conjugation experiment, we strongly recommend performing another round of desalting process. (OriGene recommends Zeba Spin Desalting Columns, 7KMWCO from Thermo Scientific)
Purification:	Purified from mouse ascites fluids or tissue culture supernatant by affinity chromatography (protein A/G)
Conjugation:	Unconjugated
Storage:	Store at -20°C as received.
Stability:	Stable for 12 months from date of receipt.
Predicted Protein Size:	137.8 kDa
Gene Name:	L1 cell adhesion molecule
Database Link:	NP_000416 Entrez Gene 16728 Mouse Entrez Gene 50687 Rat Entrez Gene 3897 Human P32004



[View online »](#)

Background:

The protein encoded by this gene is an axonal glycoprotein belonging to the immunoglobulin supergene family. The ectodomain, consisting of several immunoglobulin-like domains and fibronectin-like repeats (type III), is linked via a single transmembrane sequence to a conserved cytoplasmic domain. This cell adhesion molecule plays an important role in nervous system development, including neuronal migration and differentiation. Mutations in the gene cause three X-linked neurological syndromes known by the acronym CRASH (corpus callosum hypoplasia, retardation, aphasia, spastic paraplegia and hydrocephalus). Alternative splicing of a neuron-specific exon is thought to be functionally relevant. [provided by RefSeq, Jul 2008]

Synonyms:

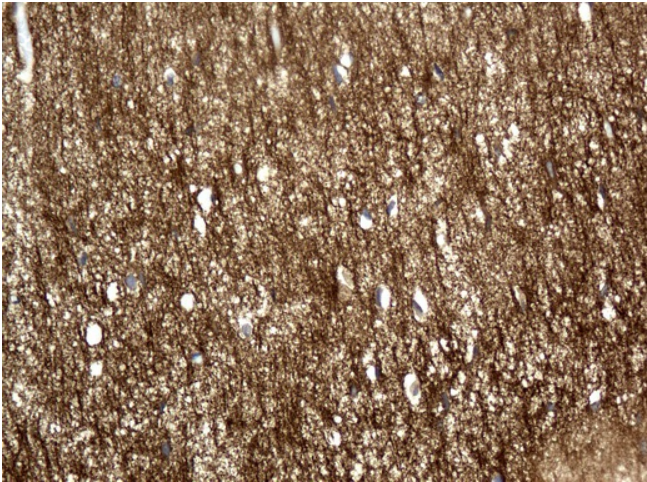
CAML1; CD171; HSAS; HSAS1; MASA; MIC5; N-CAM-L1; N-CAML1; NCAM-L1; S10; SPG1

Protein Families:

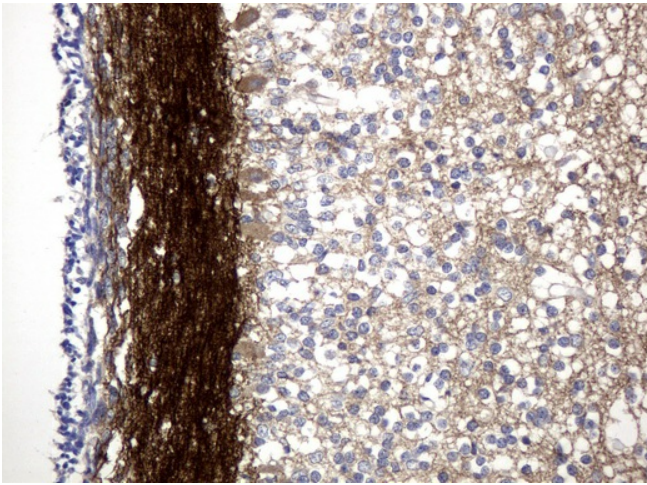
Druggable Genome, ES Cell Differentiation/IPS, Transmembrane

Protein Pathways:

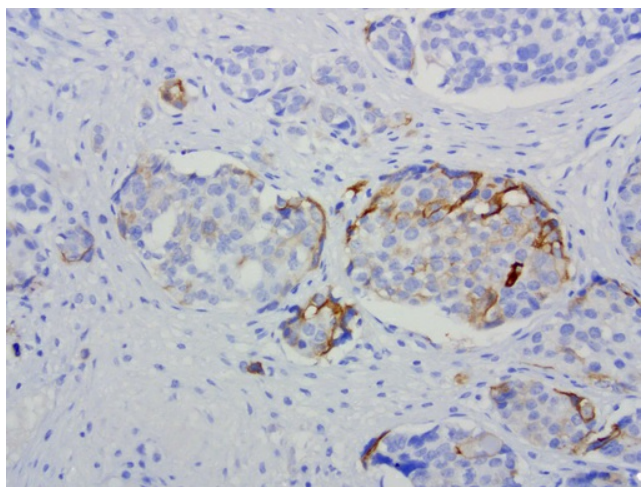
Axon guidance, Cell adhesion molecules (CAMs)

Product images:

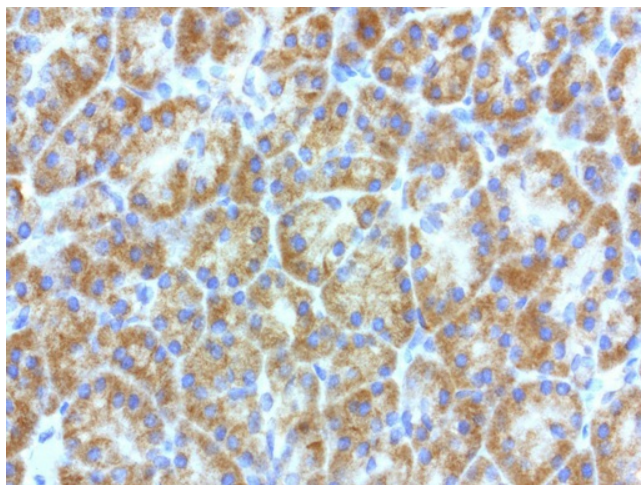
Immunohistochemical staining of paraffin-embedded Human embryonic brain cortex tissue using anti-L1CAM mouse monoclonal antibody. ([UM500043]; heat-induced epitope retrieval by 10mM citric buffer, pH6.0, 120°C for 3min)



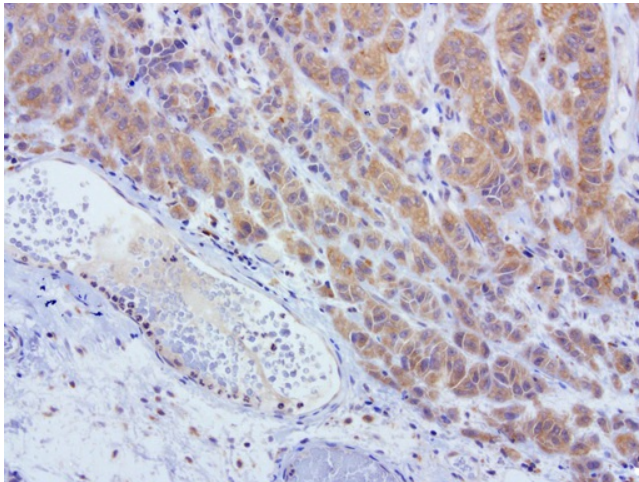
Immunohistochemical staining of paraffin-embedded Human embryonic cerebellum using anti-L1CAM mouse monoclonal antibody. ([UM500043]; heat-induced epitope retrieval by 10mM citric buffer, pH6.0, 120°C for 3min)



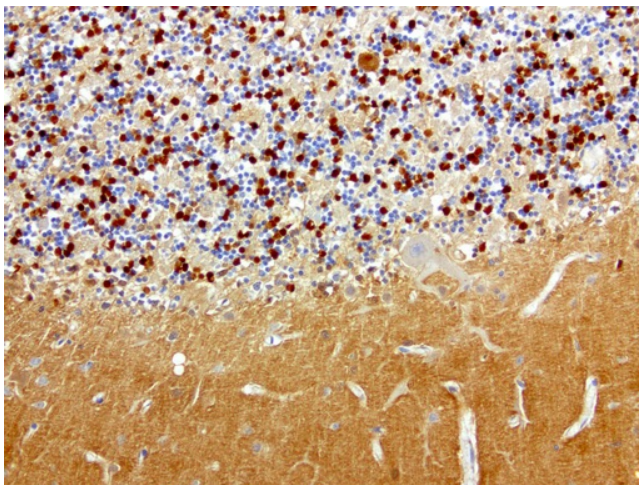
Immunohistochemical staining of paraffin-embedded human ovarian carcinoma using anti-L1CAM clone UMAB47 mouse monoclonal antibody at 1:200 with Polink2 Broad HRP DAB detection kit ([UM500043]); heat-induced epitope retrieval with citrate buffer, pH6.0at 95-100C. Cytoplasmic and membraneous staining is seen in tumor cells.



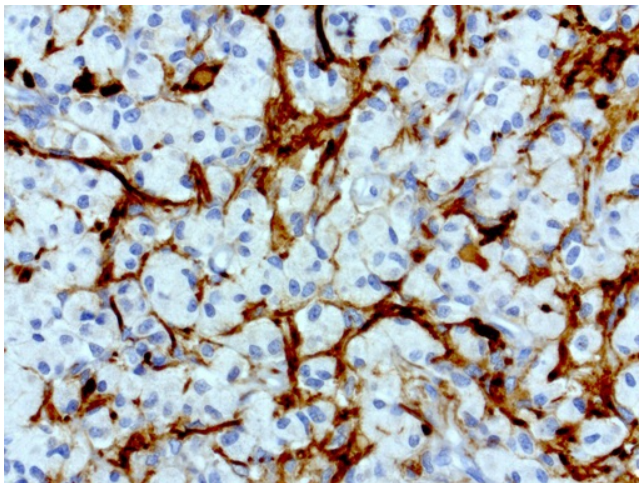
Immunohistochemical staining of paraffin-embedded human pancreas using anti-L1CAM clone UMAB47 mouse monoclonal antibody at 1:200 with Polink2 Broad HRP DAB detection kit ([UM500043]); heat-induced epitope retrieval with citrate buffer, pH6.0at 95-100C. Cytoplasmic and membraneous staining is seen glandular cells.



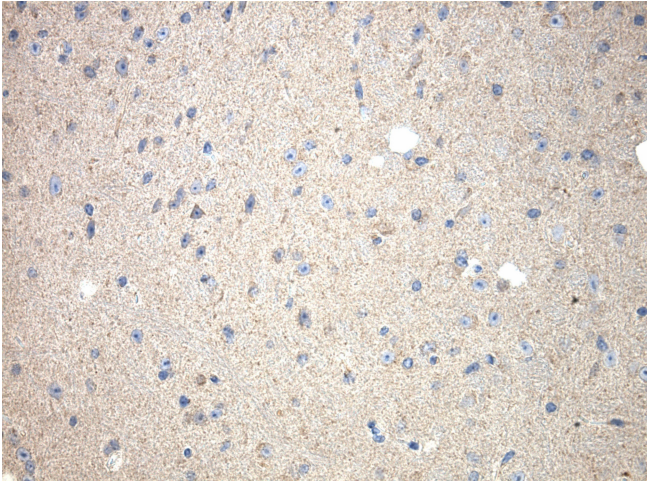
Immunohistochemical staining of paraffin-embedded human melanoma using anti-L1CAM clone UMAB47 mouse monoclonal antibody ([UM500043]) at 1:200 with Polink2 Broad HRP DAB detection kit; heat-induced epitope retrieval with GBI ACCEL HIER buffer using pressure chamber for 3 minutes at 110C. Cytoplasmic staining seen in staining in tumor cells.



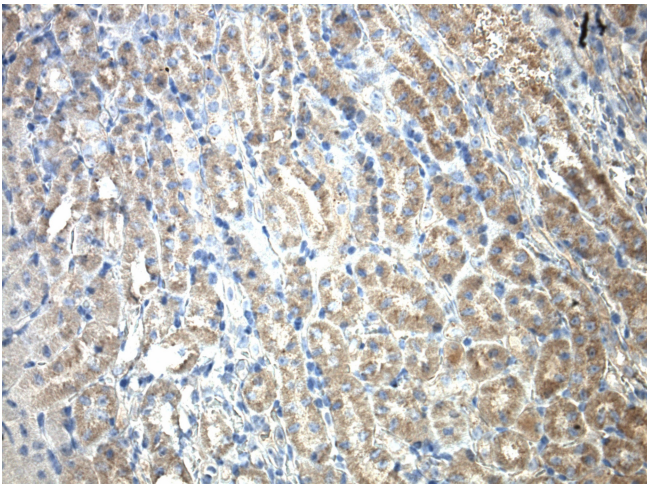
Immunohistochemical staining of paraffin-embedded human brain using anti-L1CAM clone UMAB47 mouse monoclonal antibody ([UM500043]) at 1:200 with Polink2 Broad HRP DAB detection kit; heat-induced epitope retrieval with GBI ACCEL HIER buffer using pressure chamber for 3 minutes at 110C. Cytoplasmic and membrane staining seen in staining in granular layer and the molecular layer.



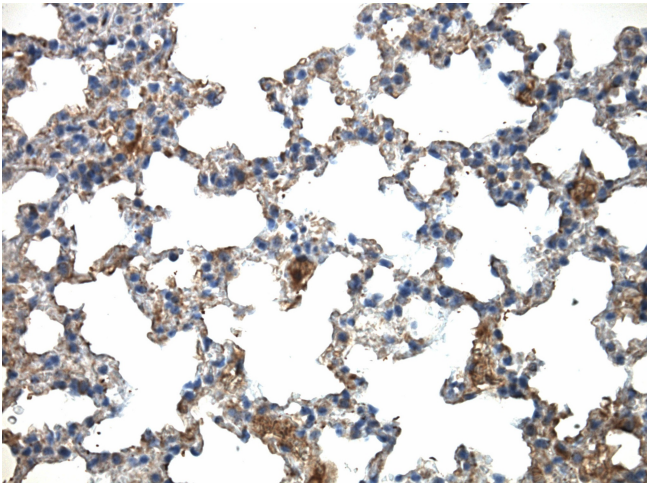
Immunohistochemical staining of paraffin-embedded human pituitary using anti-L1CAM clone UMAB47 mouse monoclonal antibody ([UM500043]) at 1:200 with Polink2 Broad HRP DAB detection kit; heat-induced epitope retrieval with GBI ACCEL HIER buffer using pressure chamber for 3 minutes at 110C. Image shows only a subset of cells with positive cytoplasmic and membrane staining.



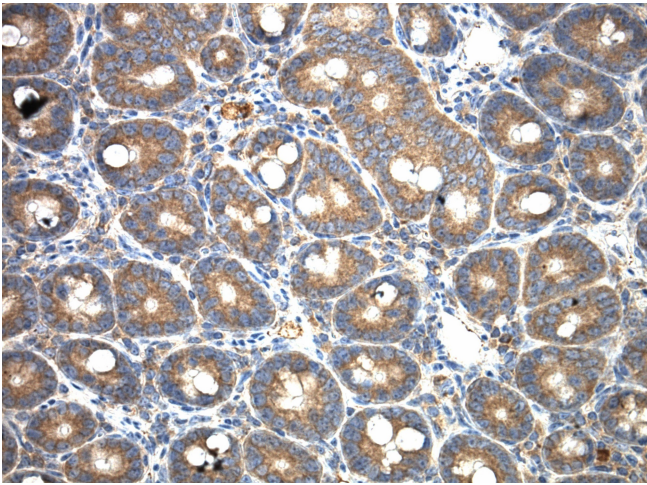
Immunohistochemical staining of paraffin-embedded mouse brain tissue using anti-L1CAM clone UMAB47 mouse monoclonal antibody. HIER TEE buffer pH9 ([B21-100]) at 110C for 10 min, [UM500043] (1:100). Detection was done with Klear Mouse (C/N [D52-18]) DAB Kit.



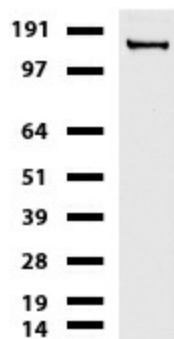
Immunohistochemical staining of paraffin-embedded mouse kidney tissue using anti-L1CAM clone UMAB47 mouse monoclonal antibody. HIER TEE buffer pH9 ([B21-100]) at 110C for 10 min, [UM500043] (1:100). Detection was done with Klear Mouse (C/N [D52-18]) DAB Kit.



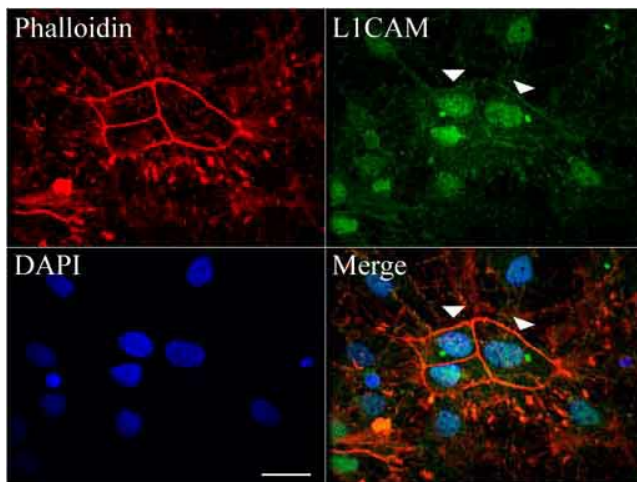
Immunohistochemical staining of paraffin-embedded mouse lung tissue using anti-L1CAM clone UMAB47 mouse monoclonal antibody. HIER TEE buffer pH9 ([B21-100]) at 110C for 10 min, [UM500043] (1:100). Detection was done with Klear Mouse (C/N [D52-18]) DAB Kit.



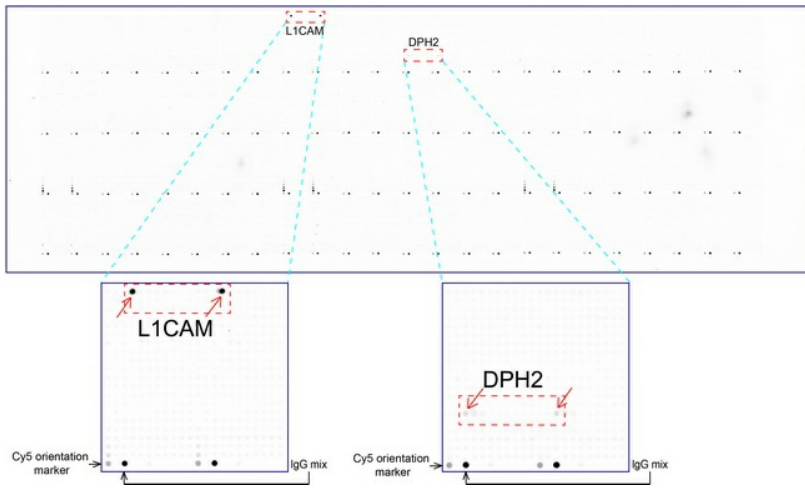
Immunohistochemical staining of paraffin-embedded mouse small intestine tissue using anti-L1CAM clone UMAB47 mouse monoclonal antibody. HIER TEE buffer pH9 ([B21-100]) at 110C for 10 min, [UM500043] (1:100). Detection was done with Klear Mouse (C/N [D52-18]) DAB Kit.



Western blot of cell lysates (35ug) from HeLa. Dilution: 1:500



Confocal immunofluorescence image of primary rat neurons labeled with anti-L1CAM mouse monoclonal antibody ([UM500043], green, 1:50). Actin filaments were labeled with TRICT-Phalloidin (red), and nuclear with DAPI (blue). Scale bar, 20µm.



OriGene overexpression protein microarray chip was immunostained with UltraMAB anti-L1CAM mouse monoclonal antibody ([UM500043]). The positive reactive proteins are highlighted with two red arrows in the enlarged subarray. All the positive controls spotted in this subarray are also labeled for clarification.