

Product datasheet for **UM500010CF**

Haptoglobin (HP) Mouse Monoclonal Antibody [Clone ID: UMAB10]

Product data:

Product Type:	Primary Antibodies
Clone Name:	UMAB10
Applications:	10k-ChIP, IF, IHC, WB
Recommended Dilution:	WB 1:500~2000, IF 1:100
Reactivity:	Human
Host:	Mouse
Isotype:	IgG1
Clonality:	Monoclonal
Immunogen:	Full length human recombinant protein of human HP (NP_005134) produced in HEK293T cell.
Formulation:	Lyophilized powder (original buffer 1X PBS, pH 7.3, 8% trehalose)
Reconstitution Method:	For reconstitution, we recommend adding 100uL distilled water to a final antibody concentration of about 1 mg/mL. To use this carrier-free antibody for conjugation experiment, we strongly recommend performing another round of desalting process. (OriGene recommends Zeba Spin Desalting Columns, 7KMWCO from Thermo Scientific)
Purification:	Purified from mouse ascites fluids or tissue culture supernatant by affinity chromatography (protein A/G)
Conjugation:	Unconjugated
Storage:	Store at -20°C as received.
Stability:	Stable for 12 months from date of receipt.
Predicted Protein Size:	43.3 kDa
Gene Name:	haptoglobin
Database Link:	NP_005134 Entrez Gene 3240 Human P00738



[View online »](#)

Background:

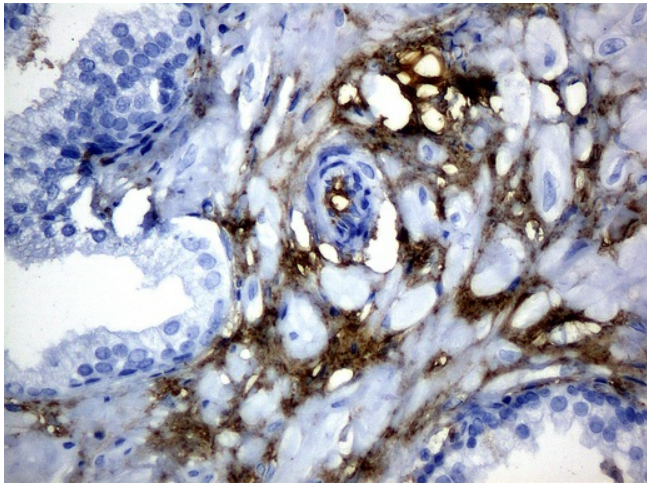
This gene encodes a preproprotein, which is processed to yield both alpha and beta chains, which subsequently combine as a tetramer to produce haptoglobin. Haptoglobin functions to bind free plasma hemoglobin, which allows degradative enzymes to gain access to the hemoglobin, while at the same time preventing loss of iron through the kidneys and protecting the kidneys from damage by hemoglobin. Mutations in this gene and/or its regulatory regions cause ahaptoglobinemia or hypohaptoglobinemia. This gene has also been linked to diabetic nephropathy, the incidence of coronary artery disease in type 1 diabetes, Crohn's disease, inflammatory disease behavior, primary sclerosing cholangitis, susceptibility to idiopathic Parkinson's disease, and a reduced incidence of Plasmodium falciparum malaria. A similar duplicated gene is located next to this gene on chromosome 16. Multiple transcript variants encoding different isoforms have been found for this gene. [provided by RefSeq]

Synonyms:

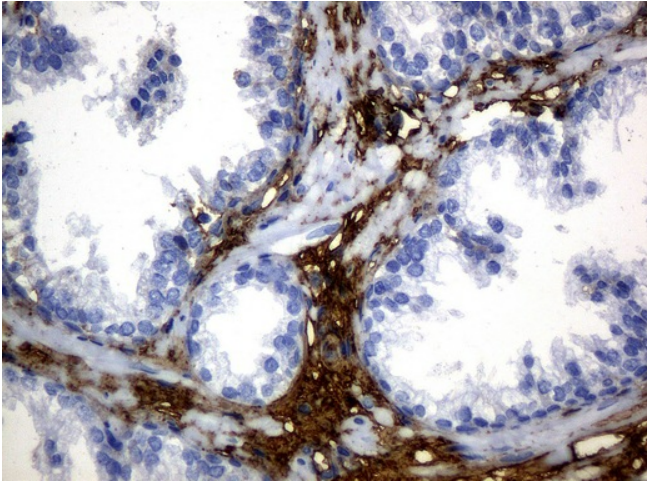
BP; HP2ALPHA2; HPA1S

Protein Families:

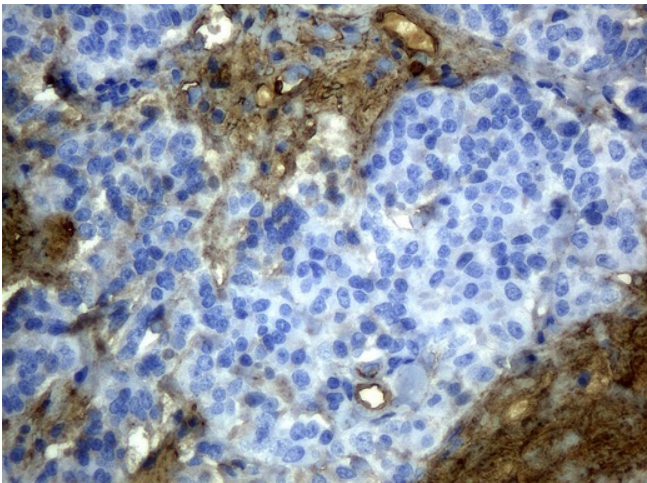
Druggable Genome, Protease, Secreted Protein, Transmembrane

Product images:

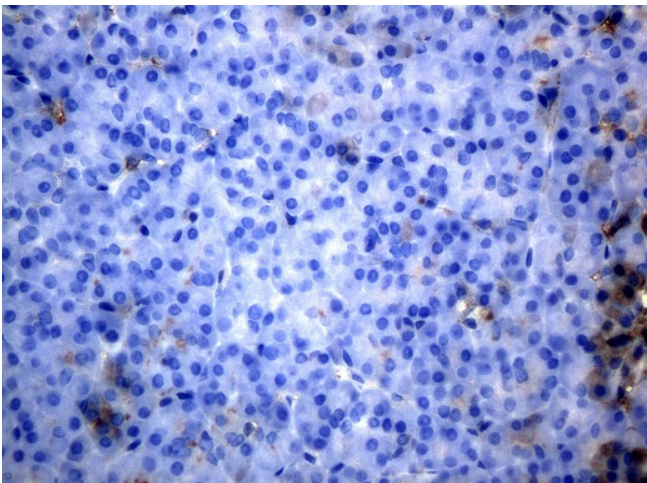
Immunohistochemical staining of paraffin-embedded Carcinoma of prostate tissue using anti-HPmouse monoclonal antibody. (Clone UMAB10, dilution 1:100; heat-induced epitope retrieval by 10mM citric buffer, pH6.0, 120°C for 3min)



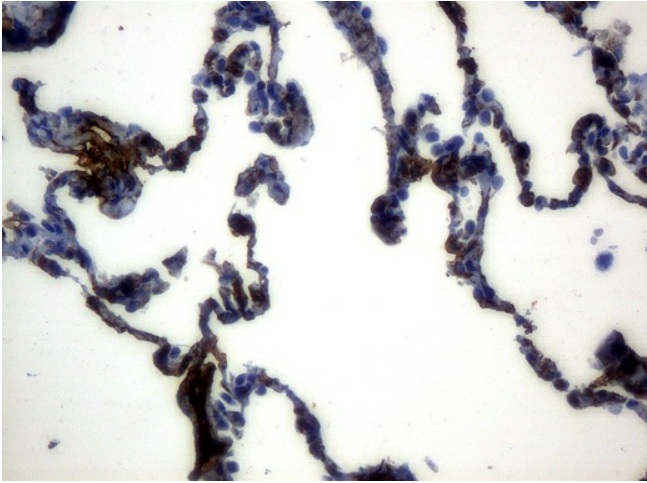
Immunohistochemical staining of paraffin-embedded prostate tissue using anti-HPmouse monoclonal antibody. (Clone UMAB10, dilution 1:100; heat-induced epitope retrieval by 10mM citric buffer, pH6.0, 120°C for 3min)



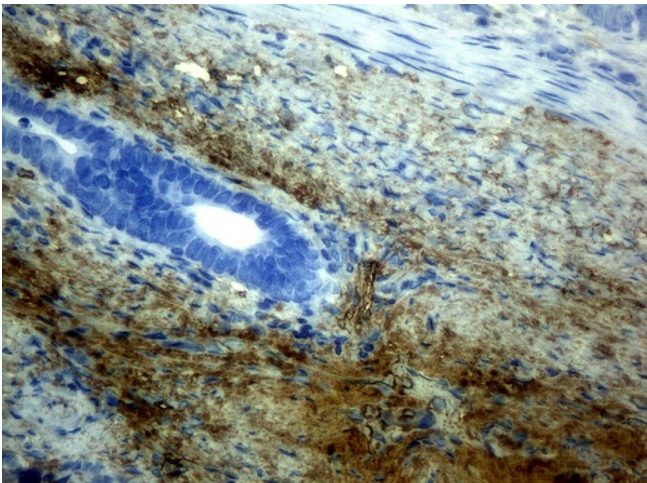
Immunohistochemical staining of paraffin-embedded Carcinoma of pancreas tissue using anti-HPmouse monoclonal antibody. (Clone UMAB10, dilution 1:100; heat-induced epitope retrieval by 10mM citric buffer, pH6.0, 120°C for 3min)



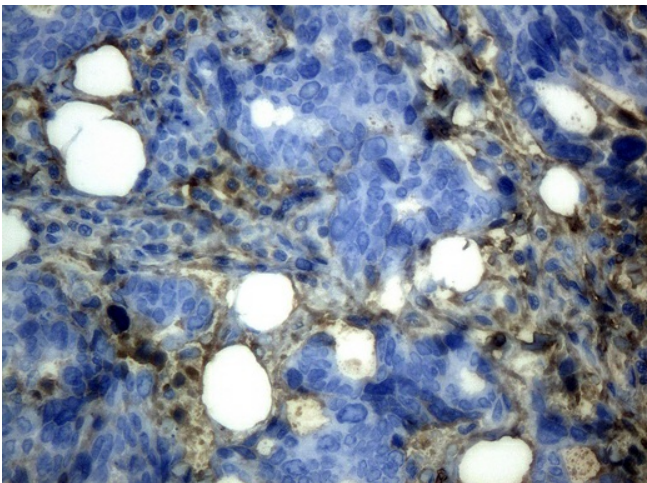
Immunohistochemical staining of paraffin-embedded pancreas tissue using anti-HPmouse monoclonal antibody. (Clone UMAB10, dilution 1:100; heat-induced epitope retrieval by 10mM citric buffer, pH6.0, 120°C for 3min)



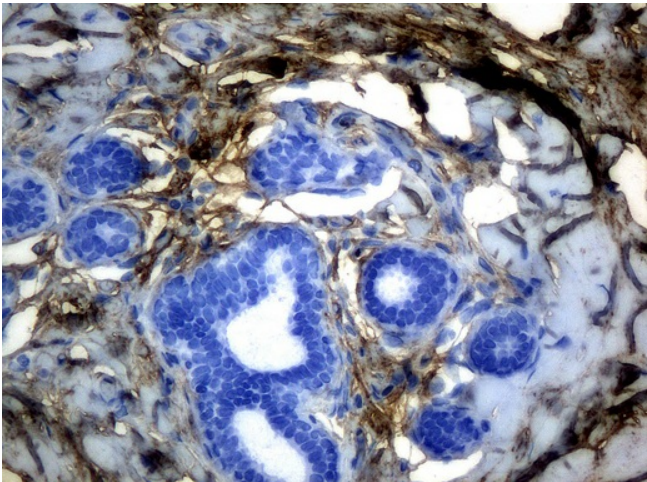
Immunohistochemical staining of paraffin-embedded lung tissue using anti-HPmouse monoclonal antibody. (Clone UMAB10, dilution 1:100; heat-induced epitope retrieval by 10mM citric buffer, pH6.0, 120°C for 3min)



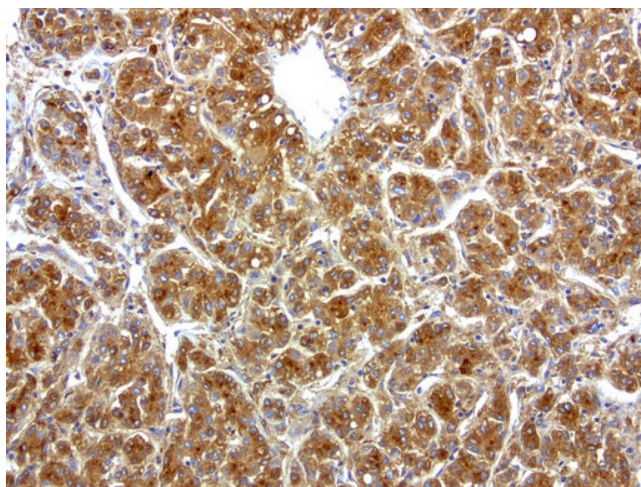
Immunohistochemical staining of paraffin-embedded Adenocarcinoma of colon tissue using anti-HPmouse monoclonal antibody. (Clone UMAB10, dilution 1:100; heat-induced epitope retrieval by 10mM citric buffer, pH6.0, 120°C for 3min)



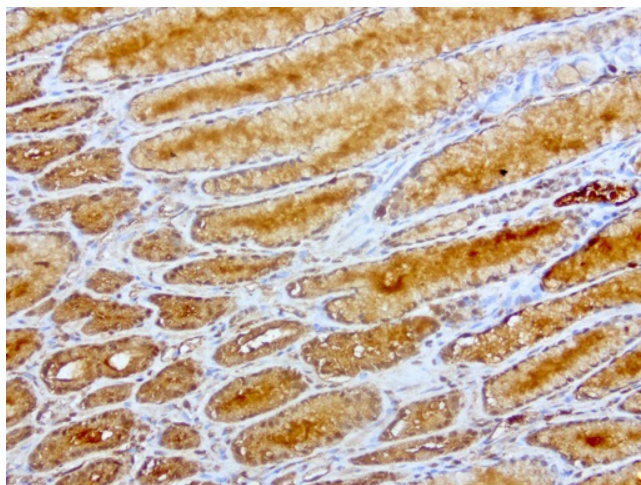
Immunohistochemical staining of paraffin-embedded Adenocarcinoma of breast tissue using anti-HP mouse monoclonal antibody. (Clone UMAB10, dilution 1:100; heat-induced epitope retrieval by 10mM citric buffer, pH6.0, 120°C for 3min)



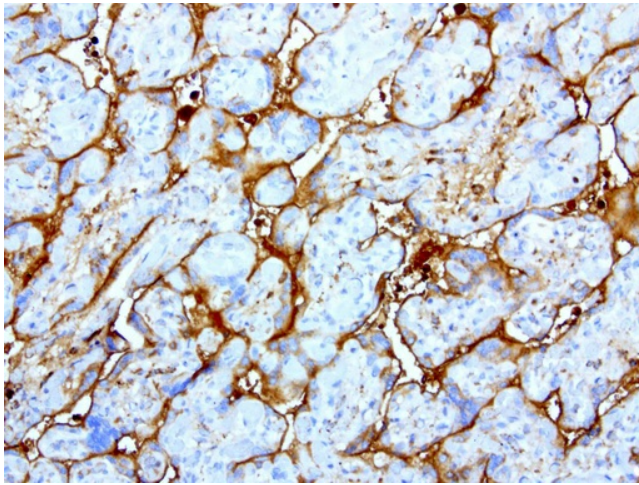
Immunohistochemical staining of paraffin-embedded breast tissue using anti-HP mouse monoclonal antibody. (Clone UMAB10, dilution 1:100; heat-induced epitope retrieval by 10mM citric buffer, pH6.0, 120°C for 3min)



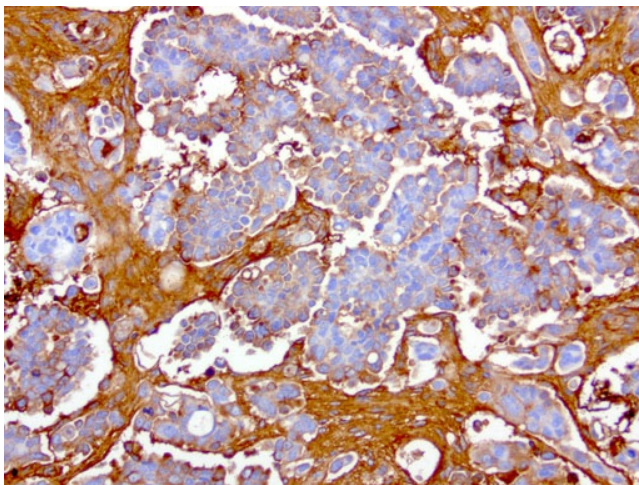
Immunohistochemical staining of paraffin-embedded human liver cancer using anti-HP clone UMAB10 mouse monoclonal antibody at 1:200 dilution of 1.0 mg/mL using Polink2 Broad HRP DAB for detection. [UM500010] requires HIER with with citrate pH6.0 at 110°C for 3min using pressure chamber/cooker. The tumor cells shows membrane and cytoplasmic staining.



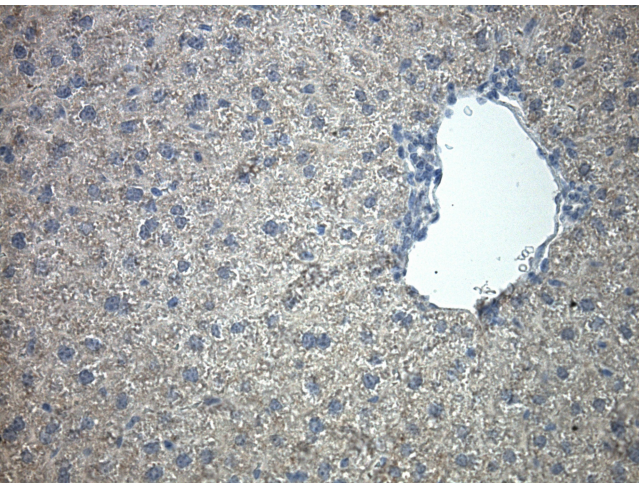
Immunohistochemical staining of paraffin-embedded human gastric cancer seen mainly normal adjacent using anti-HP clone UMAB10 mouse monoclonal antibody at 1:200 with Polink2 Broad HRP DAB detection kit ([UM500010]); heat-induced epitope retrieval with citrate buffer, pH6.0at 95-100C. Strong cytoplasmic and membraneous staining is seen in gastric glands.



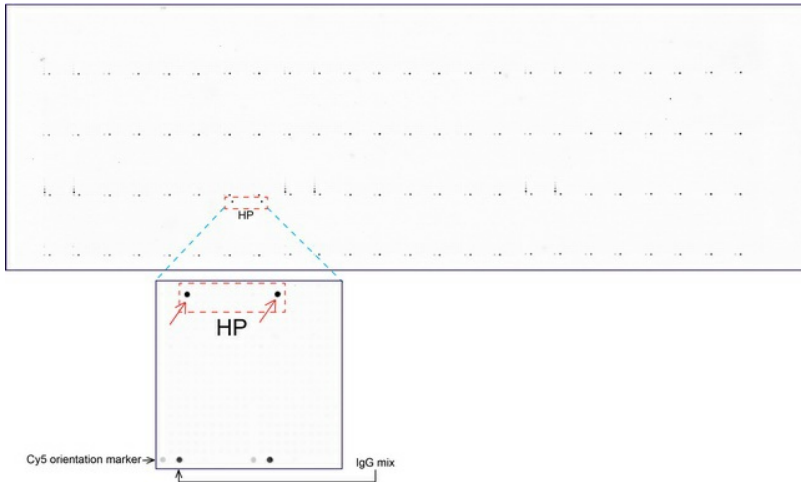
Immunohistochemical staining of paraffin-embedded human placenta using anti-HP clone UMAB10 mouse monoclonal antibody at 1:200 with Polink2 Broad HRP DAB detection kit ([UM500010]); heat-induced epitope retrieval with citrate buffer, pH6.0 at 95-100C. Strong membranous staining is seen in placenta and adjacent blood.



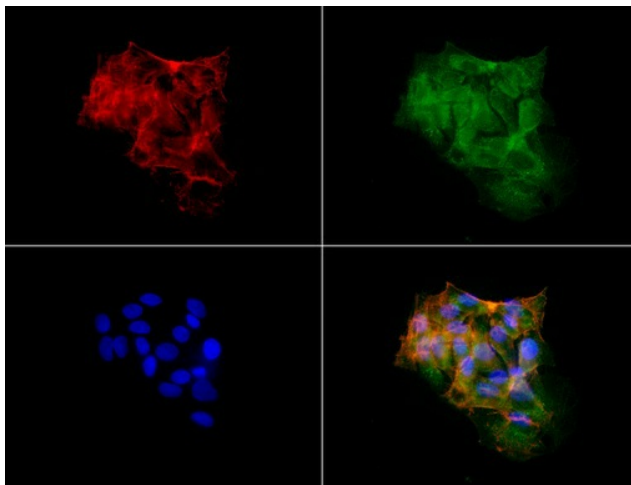
Immunohistochemical staining of paraffin-embedded human ovarian cancer using anti-HP clone UMAB10 mouse monoclonal antibody at 1:200 dilution of 1.0 mg/mL using Polink2 Broad HRP DAB for detection. [UM500010] requires HIER with with citrate pH6.0 at 110°C for 3min using pressure chamber/cooker. The tumor cells shows membrane and cytoplasmic staining.



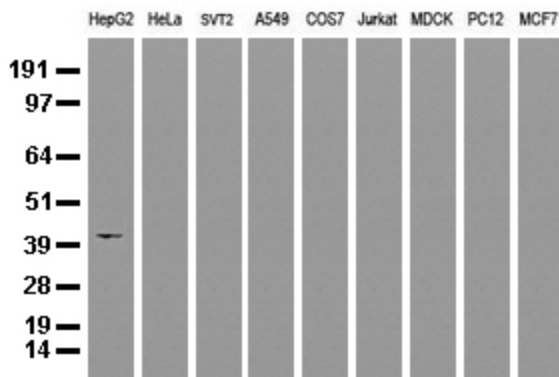
Immunohistochemical staining of paraffin-embedded mouse liver tissue using anti-HP clone UMAB10 mouse monoclonal antibody. HIER TEE buffer pH9 ([B21-100]) at 110C for 10 min, [UM500010] (1:100). Detection was done with Klear Mouse (C/N [D52-18]) DAB Kit.



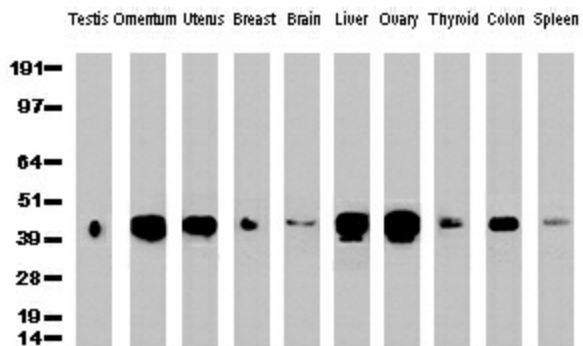
OriGene overexpression protein microarray chip was immunostained with UltraMAB anti-HP mouse monoclonal antibody (Clone UMAB10). The positive reactive proteins are highlighted with two red arrows in the enlarged subarray. All the positive controls spotted in this subarray are also labeled for clarification. These data show that UltraMAB anti-HP (Clone UMAB10) very specifically recognizes HP antigen on OriGene protein microarray chip.



Immunofluorescent staining of HepG2 cells using anti-HP mouse monoclonal antibody ([UM500010], green). Actin filaments were labeled with TRITC-phalloidin (red), and nuclear with DAPI (blue). The three-color overlay image is located at the bottom-right corner.



Western blot analysis of extracts (35ug) from 9 different cell lines by using anti-HP monoclonal antibody (Clone UMAB10) at 1:500.



Western Blot analysis of 10 different human tissue lysates (10ug) by using anti-HP monoclonal antibody (clone UMAB10, 1:500)