

Product datasheet for **TS418460P5**

MEK1 (MAP2K1) CytoSection

Product data:

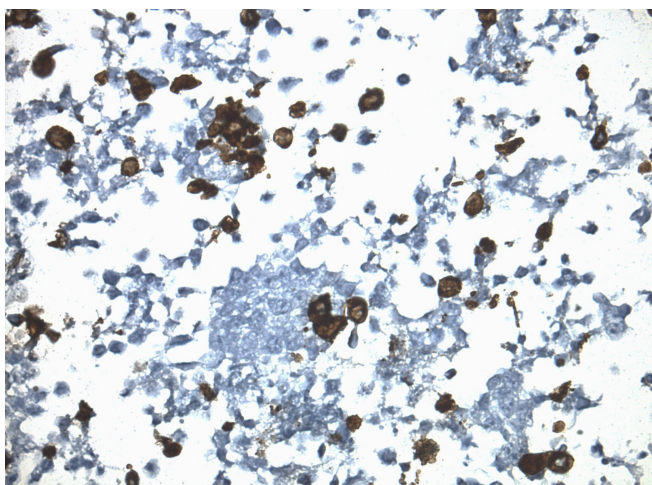
Product Type:	CytoSections
Description:	Transient overexpression of MAP2K1 in HEK293T cells, FFPE control for IHC, ICC and ISH staining, 25 slides per pack
Species:	Human
Expression Host:	HEK293T
Expression cDNA Clone or AA Sequence:	TrueORF Clone RC218460
Tag:	C-MYC/DDK
Detection Antibodies:	DDK Rabbit monoclonal antibody, recognizing both N- and C-terminal tags (TA592569)
Target Detection Antibodies:	MEK1 (MAP2K1) Mouse Monoclonal Antibody [Clone ID: OTI4E1] (TA506006)
ACCN:	NM_002755 , NP_002746
Synonyms:	CFC3; MAPKK1; MEK1; MEL; MKK1; PRKMK1
Storage:	Room Temperature
Stability:	Slides are guaranteed for a year from the date of receipt if proper storage instructions were followed.
Preparation:	HEK293T cells were transiently transfected with TrueORF cDNA plasmid. Transfected cells were cultured for 48hrs. After harvesting, the cultured cells were fixed in formalin & dehydrated before embedding in paraffin. 5 µm sections of the FFPE cell pellet blocks are cut and mounted on positively charged SuperFrost slides.
Note:	This product is for research use only and is not approved for use in humans or in clinical diagnosis.
RefSeq:	NP_002746
Locus ID:	5604
Cytogenetics:	15q22.31
Protein Families:	Druggable Genome, Protein Kinase



[View online »](#)

Protein Pathways:

Acute myeloid leukemia, B cell receptor signaling pathway, Bladder cancer, Chemokine signaling pathway, Chronic myeloid leukemia, Colorectal cancer, Dorso-ventral axis formation, Endometrial cancer, ErbB signaling pathway, Fc epsilon RI signaling pathway, Fc gamma R-mediated phagocytosis, Focal adhesion, Gap junction, Glioma, GnRH signaling pathway, Insulin signaling pathway, Long-term depression, Long-term potentiation, MAPK signaling pathway, Melanogenesis, Melanoma, Natural killer cell mediated cytotoxicity, Neurotrophin signaling pathway, Non-small cell lung cancer, Oocyte meiosis, Pancreatic cancer, Pathways in cancer, Prion diseases, Progesterone-mediated oocyte maturation, Prostate cancer, Regulation of actin cytoskeleton, Renal cell carcinoma, T cell receptor signaling pathway, Thyroid cancer, Toll-like receptor signaling pathway, Vascular smooth muscle contraction, VEGF signaling pathway

Product images:

Immunohistology staining on MEK1 overexpressed cytosection TS418460P5 with mouse anti DDK clone OTI11C3 C/N [TA180144] at 1:400 dilution 4C O/N. Antibody staining was achieved with HIER Citrate pH6 , Polink1 with DAB chromogen detection kit ([D11-18]). Positive stain shown with the brown chromogen present. HEK293T cells were transfected with cDNA clone [RC218460], 5 micron sections, 40x magnification