

Product datasheet for **TP790190**

CD20 (MS4A1) (NM_021950) Human Recombinant Protein

Product data:

Product Type:	Recombinant Proteins
Description:	Purified recombinant protein of Human membrane-spanning 4-domains, subfamily A, member 1 (MS4A1), transcript variant 3, Ile141-Ser188, with N-terminal TrxA tag, expressed in E.coli, 50ug
Species:	Human
Expression Host:	E. coli
Expression cDNA Clone or AA Sequence:	A DNA sequence from TrueORF clone, RC201242, encoding the region(Ile141-Ser188) of F5
Tag:	N-TRXA
Predicted MW:	25.9 kDa
Concentration:	>0.05 µg/µL as determined by microplate BCA method
Purity:	> 80% as determined by SDS-PAGE and Coomassie blue staining
Buffer:	50 mM Tris-HCl, pH 8.0, 500 mM NaCl, 10% glycerol
Note:	For testing in cell culture applications, please filter before use. Note that you may experience some loss of protein during the filtration process.
Storage:	Store at -80°C.
Stability:	Stable for 12 months from the date of receipt of the product under proper storage and handling conditions. Avoid repeated freeze-thaw cycles.
RefSeq:	NP_068769
Locus ID:	931
UniProt ID:	P11836 , A0A024R507
RefSeq Size:	3331
Cytogenetics:	11q12.2
RefSeq ORF:	891
Synonyms:	B1; Bp35; CD20; CVID5; FMC7; LEU-16; MS4A2; S7



[View online »](#)

Summary:

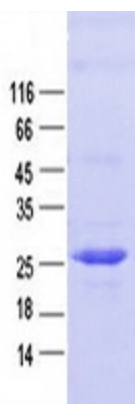
This gene encodes a member of the membrane-spanning 4A gene family. Members of this nascent protein family are characterized by common structural features and similar intron/exon splice boundaries and display unique expression patterns among hematopoietic cells and nonlymphoid tissues. This gene encodes a B-lymphocyte surface molecule which plays a role in the development and differentiation of B-cells into plasma cells. This family member is localized to 11q12, among a cluster of family members. Alternative splicing of this gene results in two transcript variants which encode the same protein. [provided by RefSeq, Jul 2008]

Protein Families:

Druggable Genome, Transmembrane

Protein Pathways:

Hematopoietic cell lineage

Product images:

Purified recombinant protein CD20 was analyzed by SDS-PAGE gel and Coomassie Blue Staining.