

Product datasheet for **TP762659**

PPFIBP2 (NM_003621) Human Recombinant Protein

Product data:

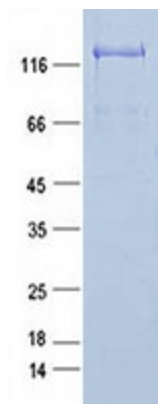
Product Type:	Recombinant Proteins
Description:	Purified recombinant protein of Human PTPRF interacting protein, binding protein 2 (liprin beta 2) (PPFIBP2)
Species:	Human
Expression Host:	E. coli
Expression cDNA Clone or AA Sequence:	A DNA sequence encoding the region full length of PPFIBP2
Tag:	N-GST and C-HIS
Predicted MW:	126.4 kDa
Concentration:	>0.05 µg/µL as determined by microplate BCA method
Purity:	> 80% as determined by SDS-PAGE and Coomassie blue staining
Buffer:	50 mM Tris-HCl, pH 8.0, 8 M urea
Note:	For testing in cell culture applications, please filter before use. Note that you may experience some loss of protein during the filtration process.
Storage:	Store at -80°C after receiving vials.
Stability:	Stable for 12 months from the date of receipt of the product under proper storage and handling conditions. Avoid repeated freeze-thaw cycles.
RefSeq:	NP_003612
Locus ID:	8495
UniProt ID:	Q8ND30
RefSeq Size:	3571
Cytogenetics:	11p15.4
RefSeq ORF:	2628
Synonyms:	Cclp1



[View online »](#)

Summary:

This gene encodes a member of the LAR protein-tyrosine phosphatase-interacting protein (liprin) family. The encoded protein is a beta liprin and plays a role in axon guidance and neuronal synapse development by recruiting LAR protein-tyrosine phosphatases to the plasma membrane. Alternatively spliced transcript variants encoding multiple isoforms have been observed for this gene. [provided by RefSeq, Feb 2012]

Product images:

Purified recombinant protein PPFIBP2 was analyzed by SDS-PAGE gel and Coomassie Blue Staining.