

Product datasheet for **TP762640**

OMA1 (NM_145243) Human Recombinant Protein

Product data:

Product Type:	Recombinant Proteins
Description:	Purified recombinant protein of Human OMA1 homolog, zinc metallopeptidase (S.cerevisiae) (OMA1)
Species:	Human
Expression Host:	E. coli
Expression cDNA Clone or AA Sequence:	A DNA sequence encoding the region full length of OMA1
Tag:	N-GST and C-HIS
Predicted MW:	88.1 kDa
Concentration:	>0.05 µg/µL as determined by microplate BCA method
Purity:	> 80% as determined by SDS-PAGE and Coomassie blue staining
Buffer:	50 mM Tris-HCl, pH 8.0, 8 M urea
Note:	For testing in cell culture applications, please filter before use. Note that you may experience some loss of protein during the filtration process.
Storage:	Store at -80°C after receiving vials.
Stability:	Stable for 12 months from the date of receipt of the product under proper storage and handling conditions. Avoid repeated freeze-thaw cycles.
RefSeq:	NP_660286
Locus ID:	115209
UniProt ID:	Q96E52
RefSeq Size:	1928
Cytogenetics:	1p32.2-p32.1
RefSeq ORF:	1572
Synonyms:	2010001O09Rik; DAB1; MPRP-1; MPRP1; peptidase; YKR087C; ZMPOMA1



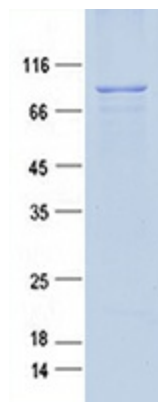
[View online »](#)

Summary:

Metalloprotease that is part of the quality control system in the inner membrane of mitochondria. Following stress conditions that induce loss of mitochondrial membrane potential, mediates cleavage of OPA1 at S1 position, leading to OPA1 inactivation and negative regulation of mitochondrial fusion. May also cleave UQCC3 under these conditions. Its role in mitochondrial quality control is essential for regulating lipid metabolism as well as to maintain body temperature and energy expenditure under cold-stress conditions. [UniProtKB/Swiss-Prot Function]

Protein Families:

Druggable Genome, Protease, Transmembrane

Product images:

Purified recombinant protein OMA1 was analyzed by SDS-PAGE gel and Coomossie Blue Staining.