

## Product datasheet for **TP762388**

### TLR9 (NM\_017442) Human Recombinant Protein

#### Product data:

Product Type:	Recombinant Proteins
Description:	Purified recombinant protein of Human toll-like receptor 9 (TLR9), Leu26-Asn300, with N-terminal His tag, expressed in E.coli, 50ug
Species:	Human
Expression Host:	E. coli
Expression cDNA Clone or AA Sequence:	A DNA sequence encoding the region (Leu26-Asn300) of TLR9
Tag:	N-His
Predicted MW:	30.5 kDa
Concentration:	>0.05 µg/µL as determined by microplate BCA method
Purity:	>80% as determined by SDS-PAGE and Coomassie blue staining
Buffer:	50 mM Tris-HCl, pH 8.0, 8 M urea
Note:	For testing in cell culture applications, please filter before use. Note that you may experience some loss of protein during the filtration process.
Storage:	Store at -80°C after receiving vials.
Stability:	Stable for 12 months from the date of receipt of the product under proper storage and handling conditions. Avoid repeated freeze-thaw cycles.
RefSeq:	<a href="#">NP_059138</a>
Locus ID:	54106
UniProt ID:	<a href="#">Q9NR96</a>
RefSeq Size:	3868
Cytogenetics:	3p21.2
RefSeq ORF:	3096
Synonyms:	CD289



[View online »](#)

**Summary:**

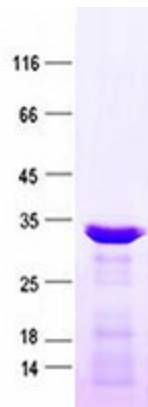
The protein encoded by this gene is a member of the Toll-like receptor (TLR) family, which plays a fundamental role in pathogen recognition and activation of innate immunity. TLRs are highly conserved from *Drosophila* to humans and share structural and functional similarities. They recognize pathogen-associated molecular patterns (PAMPs) that are expressed on infectious agents, and mediate the production of cytokines necessary for the development of effective immunity. Studies in mice and human indicate that this receptor mediates cellular response to unmethylated CpG dinucleotides in bacterial DNA to mount an innate immune response. [provided by RefSeq, Aug 2017]

**Protein Families:**

Druggable Genome, Transmembrane

**Protein Pathways:**

Toll-like receptor signaling pathway

**Product images:**

Purified recombinant protein TLR9 was analyzed by SDS-PAGE gel and Coomassie Blue Staining.