

## Product datasheet for **TP762372**

### SIRP alpha (SIRPA) (NM\_001040022) Human Recombinant Protein

#### Product data:

Product Type:	Recombinant Proteins
Description:	Purified recombinant protein of Human signal-regulatory protein alpha (SIRPA), transcript variant 1, Glu31-Ile373, with N-terminal His tag, expressed in E.coli, 50ug
Species:	Human
Expression Host:	E. coli
Expression cDNA Clone or AA Sequence:	A DNA sequence encoding the region(Glu31-Ile373) of SIRPA
Tag:	N-His
Predicted MW:	37.7 kDa
Concentration:	>0.05 µg/µL as determined by microplate BCA method
Purity:	> 80% as determined by SDS-PAGE and Coomassie blue staining
Buffer:	50 mM Tris-HCl, pH 8.0, 8 M urea
Note:	For testing in cell culture applications, please filter before use. Note that you may experience some loss of protein during the filtration process.
Storage:	Store at -80°C after receiving vials.
Stability:	Stable for 12 months from the date of receipt of the product under proper storage and handling conditions. Avoid repeated freeze-thaw cycles.
Locus ID:	140885
UniProt ID:	<a href="#">P78324</a>
RefSeq Size:	4201
Cytogenetics:	20p13
RefSeq ORF:	1515
Synonyms:	BIT; CD172A; MFR; MYD-1; P84; PTPNS1; SHPS1; SIRP



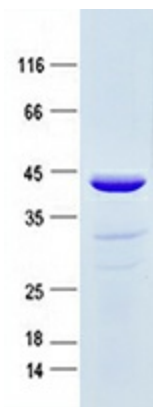
[View online »](#)

**Summary:**

The protein encoded by this gene is a member of the signal-regulatory-protein (SIRP) family, and also belongs to the immunoglobulin superfamily. SIRP family members are receptor-type transmembrane glycoproteins known to be involved in the negative regulation of receptor tyrosine kinase-coupled signaling processes. This protein can be phosphorylated by tyrosine kinases. The phospho-tyrosine residues of this PTP have been shown to recruit SH2 domain containing tyrosine phosphatases (PTP), and serve as substrates of PTPs. This protein was found to participate in signal transduction mediated by various growth factor receptors. CD47 has been demonstrated to be a ligand for this receptor protein. This gene and its product share very high similarity with several other members of the SIRP family. These related genes are located in close proximity to each other on chromosome 20p13. Multiple alternatively spliced transcript variants have been determined for this gene. [provided by RefSeq, Jul 2008]

**Protein Families:**

Druggable Genome, Phosphatase, Transmembrane

**Product images:**

Purified recombinant protein SIRPA was analyzed by SDS-PAGE gel and Coomassie Blue Staining.