

## Product datasheet for **TP762352**

### **BCL2 (NM\_000633) Human Recombinant Protein**

#### Product data:

Product Type:	Recombinant Proteins
Description:	Purified recombinant protein of Human B-cell CLL/lymphoma 2 (BCL2), nuclear gene encoding mitochondrial protein, transcript variant alpha, Gly54-Val66(8 repeat regions linked with GGGGS), with N-terminal His tag, expressed in E.coli, 50ug
Species:	Human
Expression Host:	E. coli
Expression cDNA Clone or AA Sequence:	GHTHPAASR DPVGGGGSGH TPHPAASRDP VGGGGSGHTP HPAASRDPVG GGGSGHTPHP AASRDPVGGG GSGHTHPAA SRDPVGGGGG GHTHPAASR DPVGGGGSGH TPHPAASRDP VGGGGSGHTP HPAASRDPV
Tag:	N-His
Predicted MW:	12.8 kDa
Concentration:	>0.05 µg/µL as determined by microplate BCA method
Purity:	> 80% as determined by SDS-PAGE and Coomassie blue staining
Buffer:	25 mM Tris-HCl, pH 8.0, 150 mM NaCl, 10% glycerol
Note:	For testing in cell culture applications, please filter before use. Note that you may experience some loss of protein during the filtration process.
Storage:	Store at -80°C after receiving vials.
Stability:	Stable for 12 months from the date of receipt of the product under proper storage and handling conditions. Avoid repeated freeze-thaw cycles.
RefSeq:	<a href="#">NP_000624</a>
Locus ID:	596
UniProt ID:	<a href="#">P10415</a> , <a href="#">A0A024R2B3</a>
RefSeq Size:	6492
Cytogenetics:	18q21.33
RefSeq ORF:	717
Synonyms:	Bcl-2; PPP1R50



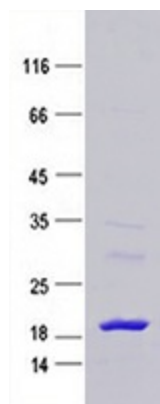
[View online »](#)

**Summary:** This gene encodes an integral outer mitochondrial membrane protein that blocks the apoptotic death of some cells such as lymphocytes. Constitutive expression of BCL2, such as in the case of translocation of BCL2 to Ig heavy chain locus, is thought to be the cause of follicular lymphoma. Alternative splicing results in multiple transcript variants. [provided by RefSeq, Feb 2016]

**Protein Families:** Druggable Genome, ES Cell Differentiation/IPS, Stem cell - Pluripotency, Transmembrane

**Protein Pathways:** Amyotrophic lateral sclerosis (ALS), Apoptosis, Colorectal cancer, Focal adhesion, Neurotrophin signaling pathway, Pathways in cancer, Prostate cancer, Small cell lung cancer

### Product images:



Purified recombinant protein BCL2 was analyzed by SDS-PAGE gel and Coomassie Blue Staining.