

Product datasheet for **TP762342**

Eph receptor A6 (EPHA6) (NM_001080448) Human Recombinant Protein

Product data:

Product Type:	Recombinant Proteins
Description:	Purified recombinant protein of Human EPH receptor A6 (EPHA6), transcript variant 1, Glu225-Arg481, with N-terminal His tag, expressed in E.coli, 50ug
Species:	Human
Expression Host:	E. coli
Expression cDNA Clone or AA Sequence:	A DNA sequence encoding the region(Glu225-Arg481) of EPHA6
Tag:	N-His
Predicted MW:	28.4 kDa
Concentration:	>0.05 µg/µL as determined by microplate BCA method
Purity:	> 80% as determined by SDS-PAGE and Coomassie blue staining
Buffer:	50 mM Tris-HCl, pH 8.0, 8 M urea
Note:	For testing in cell culture applications, please filter before use. Note that you may experience some loss of protein during the filtration process.
Storage:	Store at -80°C after receiving vials.
Stability:	Stable for 12 months from the date of receipt of the product under proper storage and handling conditions. Avoid repeated freeze-thaw cycles.
RefSeq:	NP_001073917
Locus ID:	285220
UniProt ID:	A0A0B4J1T8 , B3KS12
RefSeq Size:	3677
Cytogenetics:	3q11.2
RefSeq ORF:	3390
Synonyms:	EHK-2; EHK2; EK12; EPA6; HEK12; PRO57066



[View online »](#)

Summary:

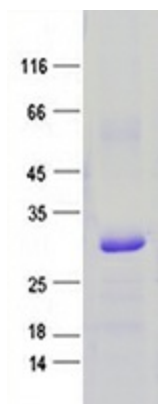
Receptor tyrosine kinase which binds promiscuously GPI-anchored ephrin-A family ligands residing on adjacent cells, leading to contact-dependent bidirectional signaling into neighboring cells. The signaling pathway downstream of the receptor is referred to as forward signaling while the signaling pathway downstream of the ephrin ligand is referred to as reverse signaling (By similarity).[UniProtKB/Swiss-Prot Function]

Protein Families:

Druggable Genome, Protein Kinase, Transmembrane

Protein Pathways:

Axon guidance

Product images:

Purified recombinant protein EPHA6 was analyzed by SDS-PAGE gel and Coomassie Blue Staining.