

Product datasheet for **TP762329**

Cytochrome P450 26B (CYP26B1) (NM_019885) Human Recombinant Protein

Product data:

Product Type:	Recombinant Proteins
Description:	Purified recombinant protein of Human cytochrome P450, family 26, subfamily B, polypeptide 1 (CYP26B1), Pro229-End, with N-terminal His tag, expressed in E.coli, 50ug
Species:	Human
Expression Host:	E. coli
Expression cDNA Clone or AA Sequence:	A DNA sequence encoding the region(Pro229-End) of CYP26B1
Tag:	N-His
Predicted MW:	31.8 kDa
Concentration:	>0.05 µg/µL as determined by microplate BCA method
Purity:	> 80% as determined by SDS-PAGE and Coomassie blue staining
Buffer:	50 mM Tris-HCl, pH 8.0, 8 M urea
Note:	For testing in cell culture applications, please filter before use. Note that you may experience some loss of protein during the filtration process.
Storage:	Store at -80°C after receiving vials.
Stability:	Stable for 12 months from the date of receipt of the product under proper storage and handling conditions. Avoid repeated freeze-thaw cycles.
RefSeq:	NP_063938
Locus ID:	56603
UniProt ID:	Q9NR63
RefSeq Size:	4567
Cytogenetics:	2p13.2
RefSeq ORF:	1536
Synonyms:	CYP26A2; P450RAI-2; P450RAI2; RHFCA



[View online »](#)

Summary:

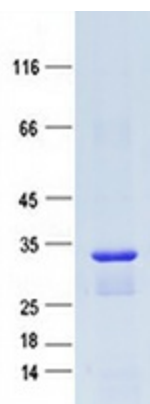
This gene encodes a member of the cytochrome P450 superfamily. The cytochrome P450 proteins are monooxygenases which catalyze many reactions involved in drug metabolism and synthesis of cholesterol, steroids and other lipids. The encoded protein is localized to the endoplasmic reticulum, and functions as a critical regulator of all-trans retinoic acid levels by the specific inactivation of all-trans retinoic acid to hydroxylated forms. Mutations in this gene are associated with radiohumeral fusions and other skeletal and craniofacial anomalies, and increased levels of the encoded protein are associated with atherosclerotic lesions. Alternative splicing results in multiple transcript variants. [provided by RefSeq, Apr 2013]

Protein Families:

Druggable Genome, P450

Protein Pathways:

Retinol metabolism

Product images:

Purified recombinant protein CYP26B1 was analyzed by SDS-PAGE gel and Coomassie Blue Staining.