

## Product datasheet for **TP723999**

### PD1 (PDCD1) Human Recombinant Protein

#### Product data:

Product Type:	Recombinant Proteins
Description:	Human PD-1 Protein, hFc-His tag
Species:	Human
Expression Host:	HEK293
Expression cDNA Clone or AA Sequence:	PD-1□Leu25-Gln167□+hFc□Glu99-Ala330□+6×His tag
Tag:	C-Human Fc and 6×His
Predicted MW:	42.9 kDa
Purity:	> 95%
Buffer:	Lyophilized from sterile PBS, pH 7.4. Normally 5% - 8% trehalose is added as protectants before lyophilization
Reconstitution Method:	Reconstitute with deionized water
Preparation:	Affinity purification
Applications:	ELISA
Storage:	Store the lyophilized protein at -20°C. After reconstitution, store the protein at -80°C for 12 months. Avoid repeated freezing and thawing.
Stability:	12 months from date of despatch
Locus ID:	5133
UniProt ID:	<a href="#">Q15116</a>
Summary:	This protein is expressed in pro-B-cells and is thought to play a role in their differentiation. In mice, expression of this gene is induced in the thymus when anti-CD3 antibodies are injected and large numbers of thymocytes undergo apoptosis. Mice deficient for this gene bred on a BALB/c background developed dilated cardiomyopathy and died from congestive heart failure. These studies suggest that this gene product may also be important in T cell function and contribute to the prevention of autoimmune diseases.



[View online »](#)

Product images:

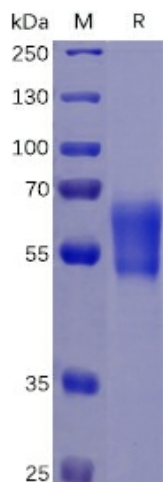


Figure 1. Human PD-1 Protein, hFc-His Tag on SDS-PAGE under reducing condition.

Human PD1, hFc-His Tagged protein ELISA

0.2 µg of PD1, hFc-His Tagged protein per well

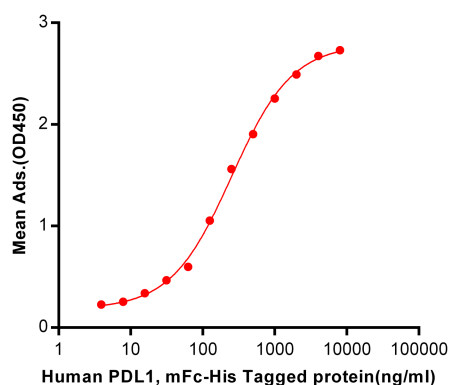


Figure 2. ELISA plate pre-coated by 2 µg/ml (100 µl/well) Human PD1, hFc-His tagged protein (TP723999) can bind Human PDL1, mFc-His tagged protein ([TP723946]) in a linear range of 62.5-251.1 ng/ml.