

Product datasheet for **TP723976**

EPCAM Human Recombinant Protein

Product data:

Product Type:	Recombinant Proteins
Description:	Human EPCAM Protein, His Tag
Species:	Human
Expression Host:	HEK293
Expression cDNA Clone or AA Sequence:	EPCAM[Gln24-Gly314]+6×His tag
Tag:	C-6×His
Predicted MW:	28.2 kDa
Purity:	> 95%
Buffer:	Lyophilized from sterile PBS, pH 7.4. Normally 5% - 8% trehalose is added as protectants before lyophilization
Reconstitution Method:	Reconstitute with deionized water
Preparation:	Affinity purification
Storage:	Store the lyophilized protein at -20°C. After reconstitution, store the protein at -80°C for 12 months. Avoid repeated freezing and thawing.
Stability:	12 months from date of despatch
Locus ID:	4072
UniProt ID:	P16422
Summary:	This gene encodes a carcinoma-associated antigen and is a member of a family that includes at least two type I membrane proteins. This antigen is expressed on most normal epithelial cells and gastrointestinal carcinomas and functions as a homotypic calcium-independent cell adhesion molecule. The antigen is being used as a target for immunotherapy treatment of human carcinomas. Mutations in this gene result in congenital tufting enteropathy.



[View online »](#)

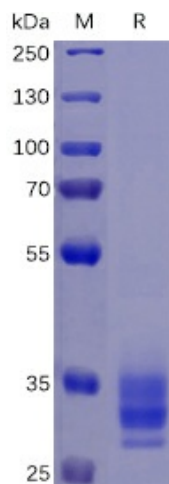
Product images:

Figure 1. Human EPCAM Protein, His Tag on SDS-PAGE under reducing condition.