

Product datasheet for **TP723966**

CD272 (BTLA) Human Recombinant Protein

Product data:

Product Type:	Recombinant Proteins
Description:	Human BTLA Protein, mFc-His Tag
Species:	Human
Expression Host:	HEK293
Expression cDNA Clone or AA Sequence:	BTLA[Lys31-Ser150]+mFc[Pro99-Lys330]+6×His tag
Tag:	C-Mouse Fc and 6×His
Predicted MW:	41.3 kDa
Purity:	> 95%
Buffer:	Lyophilized from sterile PBS, pH 7.4. Normally 5% - 8% trehalose is added as protectants before lyophilization
Reconstitution Method:	Reconstitute with deionized water
Preparation:	Affinity purification
Applications:	ELISA
Storage:	Store the lyophilized protein at -20°C. After reconstitution, store the protein at -80°C for 12 months. Avoid repeated freezing and thawing.
Stability:	12 months from date of despatch
Locus ID:	151888
UniProt ID:	Q7Z6A9
Summary:	This gene encodes a member of the immunoglobulin superfamily. The encoded protein contains a single immunoglobulin (Ig) domain and is a receptor that relays inhibitory signals to suppress the immune response. Alternative splicing results in multiple transcript variants. Polymorphisms in this gene have been associated with an increased risk of rheumatoid arthritis.



[View online »](#)

Product images:

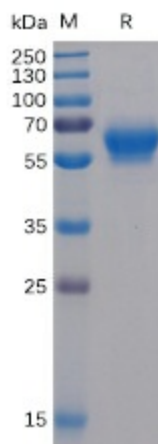


Figure 1. Human BTLA Protein, mFc-His Tag on SDS-PAGE under reducing condition.

Human BTLA, mFc-His Tagged protein ELISA

0.2 μ g of HVEM, His Tagged protein per well

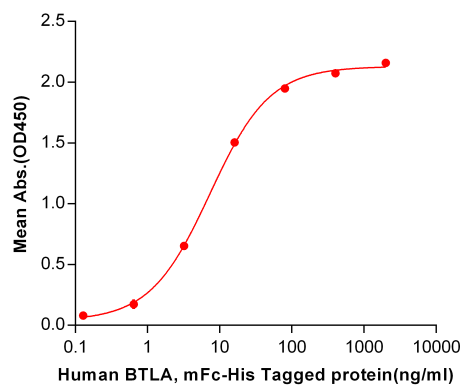


Figure 2. ELISA plate pre-coated by 2 μ g/ml (100 μ l/well) Human HVEM, His tagged protein ([TP724119]) can bind Human BTLA, mFc-His tagged protein (TP723966) in a linear range of 0.64-80 ng/ml.