

## Product datasheet for **TP723954**

### Mesothelin (MSLN) Human Recombinant Protein

#### Product data:

|                                       |  |
|---------------------------------------|--|
| Product Type:                         | Recombinant Proteins   |
| Description:                          | Human MSLN(296-580) Protein, mFc-His Tag   |
| Species:                              | Human  |
| Expression Host:                      | HEK293   |
| Expression cDNA Clone or AA Sequence: | MSLN[Glu296-Gly580]+mFc[Pro99-Lys330]+6×His tag  |
| Tag:                                  | C-Mouse Fc and 6×His   |
| Predicted MW:                         | 59.3 kDa   |
| Purity:                               | > 95%  |
| Buffer:                               | Lyophilized from sterile PBS, pH 7.4. Normally 5% - 8% trehalose is added as protectants before lyophilization   |
| Reconstitution Method:                | Reconstitute with deionized water  |
| Preparation:                          | Affinity purification  |
| Applications:                         | ELISA  |
| Storage:                              | Store the lyophilized protein at -20°C.<br>After reconstitution, store the protein at -80°C for 12 months.<br>Avoid repeated freezing and thawing.   |
| Stability:                            | 12 months from date of despatch  |
| Locus ID:                             | 10232  |
| UniProt ID:                           | <a href="#">Q13421</a>   |
| Summary:                              | This gene encodes a preproprotein that is proteolytically processed to generate two protein products, megakaryocyte potentiating factor and mesothelin. Megakaryocyte potentiating factor functions as a cytokine that can stimulate colony formation of bone marrow megakaryocytes. Mesothelin is a glycosylphosphatidylinositol-anchored cell-surface protein that may function as a cell adhesion protein. This protein is overexpressed in epithelial mesotheliomas, ovarian cancers and in specific squamous cell carcinomas. Alternative splicing results in multiple transcript variants, at least one of which encodes an isoform that is proteolytically processed. |



[View online »](#)

Product images:

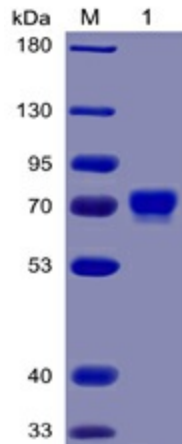


Figure 1. Human Mesothelin(296-580) Protein, mFc-His Tag on SDS-PAGE under reducing condition.

**Human MSLN(296-580), mFc-His Tagged protein ELISA**

0.2 µg of MSLN(296-580), mFc-His Tagged protein per well

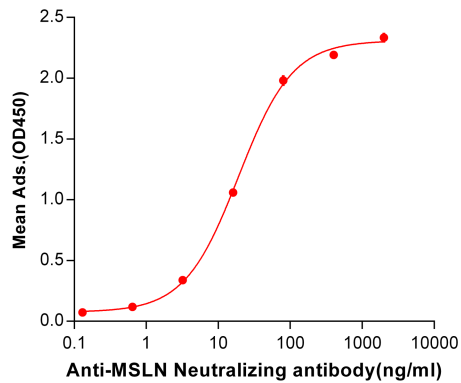


Figure 2. ELISA plate pre-coated by 2 µg/ml (100 µl/well) Human Mesothelin, mFc-His tagged protein (TP723954) can bind Anti-Mesothelin Neutralizing antibody BME100021 in a linear range of 3.2-80.0 ng/ml.