

Product datasheet for **TP721339**

Human Recombinant Protein

Product data:

Product Type:	Recombinant Proteins
Description:	Human Trop2 Protein (C-His)
Species:	Human
Expression Host:	CHO
Expression cDNA Clone or AA Sequence:	Gln31-Thr274
Tag:	C-His
Predicted MW:	The protein has a predicted molecular weight of 31kDa and migrates at approximately 40-50kDa on SDS-PAGE with DTT-reduced condition.
Concentration:	25µg size is bottled at 0.2mg/mL concentration. 100 µg size is bottled at lot specific concentration.
Purity:	>90%
Buffer:	1xPBS buffer, pH7.4
Bioactivity:	Positive
	<p>The definition of the active protein (purified and biotinylated) is defined as the protein that can bind to its biological receptor/ligand. For conjugated protein, it is defined with its function to bind to the ScFv of the active CAR-transfected cells in flow cytometry test.</p>
Preparation:	Affinity Ni-NTA
Applications:	ELISA
Storage:	An unopened vial can be stored at 4°C for 2 weeks or at -20°C and below for six months. This stock solution should be aliquoted and stored at ≤ -70°C to minimize the freeze/thaw cycles.
Stability:	6 Months
RefSeq:	NP_002344.2
Locus ID:	4070
UniProt ID:	P09758

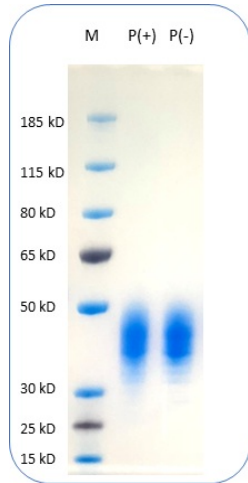


[View online »](#)

Summary:

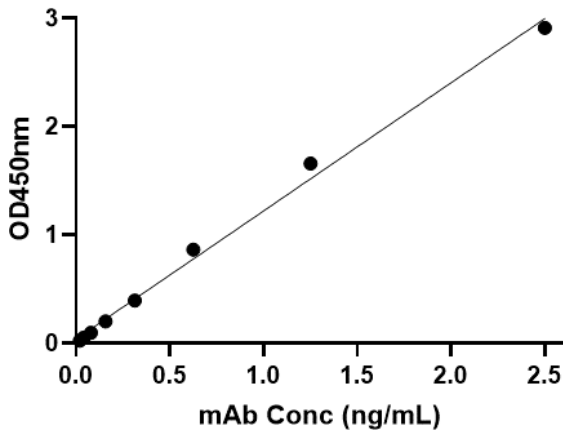
Human TROP-2 protein is a type I cell surface glycoprotein highly expressed in a wide variety of human carcinomas. It is also referred to as tumor-associated calcium signal transducer 2 (TACSTD2), gp50, GA733-1 or M1S1. TROP-2 transduces an intracellular calcium signal, which are consistent with the hypothesis that it acts as a cell surface receptor and support a search for a physiological ligand.

Product images:



Human Trop2 protein (C-His) is coated at 100ng/well. Anti-Trop2 antibody can detect the Trop2 protein with a linear range of 0.02 -2.5 ng/mL

TROP-2 ELISA



Human Trop2 Protein (C-His) on SDS-PAGE under reducing condition P(+) and non-reducing condition P(-). The purity of this protein appears to be greater than 95% based on Coomassie-blue staining.