

Product datasheet for **TP721268**

Human Recombinant Protein

Product data:

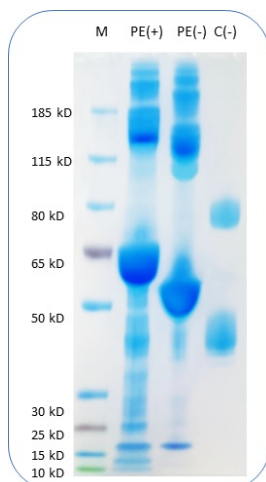
Product Type:	Recombinant Proteins
Description:	PE Conjugated Human Mesothelin (E296-G580) Protein (C-His)
Species:	Human
Expression Host:	HEK293
Expression cDNA Clone or AA Sequence:	E296-G580
Tag:	C-His
Predicted MW:	The protein has a predicted molecular weight of 33.7 kDa and migrates at approximately 35-45 kDa on SDS-PAGE with DTT-reduced conditions before PE conjugation.
Concentration:	25µg size is bottled at 0.1mg/mL concentration. 100 µg size is bottled at lot specific concentration.
Purity:	>90%
Conjugation:	PE
Buffer:	1xPBS buffer, pH7.4, 0.09% NaN ₃ with a carrier protein
Bioactivity:	Positive

The definition of the active protein (purified and biotinylated) is defined as the protein that can bind to its biological receptor/ligand. For conjugated protein, it is defined with its function to bind to the ScFv of the active CAR-transfected cells in flow cytometry test.

Preparation:	Affinity Ni-NTA
Applications:	FACS
Storage:	An unopened vial can be stored at 4°C for 2 weeks or at -20°C and below for six months. This stock solution should be aliquoted and stored at ≤ -70°C to minimize the freeze/thaw cycles.
Stability:	6 Months
RefSeq:	AAH09272.1
Locus ID:	10232
UniProt ID:	Q13421



[View online »](#)

Product images:

PE conjugated Human MSLN Protein (C-His) on SDS-PAGE under reducing condition PE(+) and non-reducing condition PE(-); C(-) is unconjugated protein.