

## Product datasheet for **TP701042**

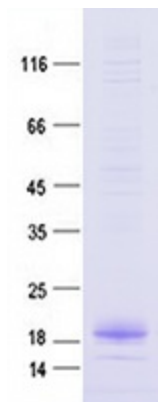
### GCDFP 15 (PIP) (NM\_002652) Human Recombinant Protein

#### Product data:

Product Type:	Recombinant Proteins
Description:	Purified recombinant protein of Human prolactin-induced protein (PIP), Gln29-End, with C-terminal His tag, expressed in HEK293 cells, 50ug
Species:	Human
Expression Host:	HEK293T
Expression cDNA Clone or AA Sequence:	A DNA sequence from TrueORF clone, RC203135, encoding the region(Gln29-End) of PIP
Tag:	C-His
Predicted MW:	14.8 kDa
Concentration:	>0.05 µg/µL as determined by microplate BCA method
Purity:	> 80% as determined by SDS-PAGE and Coomassie blue staining
Buffer:	PBS, pH 7.4, 300 mM imidazole, 10% glycerol
Note:	For testing in cell culture applications, please filter before use. Note that you may experience some loss of protein during the filtration process.
Storage:	Store at -80°C after receiving vials.
Stability:	Stable for 12 months from the date of receipt of the product under proper storage and handling conditions. Avoid repeated freeze-thaw cycles.
RefSeq:	<a href="#">NP_002643</a>
Locus ID:	5304
UniProt ID:	<a href="#">P12273</a>
RefSeq Size:	591
Cytogenetics:	7q34
RefSeq ORF:	438
Synonyms:	GCDFP-15; GCDFP15; GPIP4
Protein Families:	Secreted Protein



[View online »](#)

**Product images:**

Purified recombinant protein PIP was analyzed by SDS-PAGE gel and Coomassie Blue Staining.