

Product datasheet for TP328735L

alpha Synuclein (SNCA) (NM_001146054) Human Recombinant Protein

Product data:

Product Type: Recombinant Proteins
Description: Recombinant protein of human synuclein, alpha (non A4 component of amyloid precursor) (SNCA), transcript variant 2, 1 mg

Species: Human

Expression Host: HEK293T

Expression cDNA Clone or AA Sequence: >RC228735 representing NM_001146054
Red=Cloning site **Green**=Tags(s)

MDVFMKGLSKAKEGWAAAEEKTKQGVAAEAGKTKEGVLYVGSKTKEGWVHGVAETVAEKTKEQVTNVGGAV
VTGVTAVAQKTVEGAGSIAAATGFVKKDKQLGKNEEGAPQEGILEDMPVDPDNEAYEMPSEEGYQDYEPEA

TRTRPLEQKLISEEDLAANDILDYKDDDDKV

Tag: C-Myc/DDK

Predicted MW: 14.3 kDa

Concentration: >0.05 µg/µL as determined by microplate BCA method

Purity: > 80% as determined by SDS-PAGE and Coomassie blue staining

Buffer: 25 mM Tris-HCl, 100 mM glycine, pH 7.3, 10% glycerol

Preparation: NULL or Add: Recombinant proteins was captured through anti-DDK affinity column followed by conventional chromatography steps.

Note: For testing in cell culture applications, please filter before use. Note that you may experience some loss of protein during the filtration process.

Storage: Store at -80°C.

Stability: Stable for 12 months from the date of receipt of the product under proper storage and handling conditions. Avoid repeated freeze-thaw cycles.

RefSeq: [NP_001139526](#)

Locus ID: 6622

UniProt ID: [P37840](#)

Cytogenetics: 4q22.1



[View online »](#)

RefSeq ORF: 420

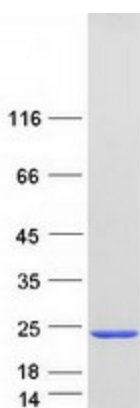
Synonyms: NACP; PARK1; PARK4; PD1

Summary: Alpha-synuclein is a member of the synuclein family, which also includes beta- and gamma-synuclein. Synucleins are abundantly expressed in the brain and alpha- and beta-synuclein inhibit phospholipase D2 selectively. SNCA may serve to integrate presynaptic signaling and membrane trafficking. Defects in SNCA have been implicated in the pathogenesis of Parkinson disease. SNCA peptides are a major component of amyloid plaques in the brains of patients with Alzheimer's disease. Alternatively spliced transcripts encoding different isoforms have been identified for this gene. [provided by RefSeq, Feb 2016]

Protein Families: Druggable Genome

Protein Pathways: Alzheimer's disease, Parkinson's disease

Product images:



Coomassie blue staining of purified SNCA protein (Cat# [TP328735]). The protein was produced from HEK293T cells transfected with SNCA cDNA clone (Cat# [RC228735]) using MegaTran 2.0 (Cat# [TT210002]).