

## Product datasheet for TP324966

### MARS2 (NM\_138395) Human Recombinant Protein

#### Product data:

|                                       |   |
|---------------------------------------|---|
| Product Type:                         | Recombinant Proteins  |
| Description:                          | Recombinant protein of human methionyl-tRNA synthetase 2, mitochondrial (MARS2), nuclear gene encoding mitochondrial protein, 20 µg |
| Species:                              | Human   |
| Expression Host:                      | HEK293T   |
| Expression cDNA Clone or AA Sequence: | >RC224966 protein sequence<br>Red=Cloning site Green=Tags(s)  |

MLRTSVLRLLLGRTGASRLSLLDFGPRYYSSGSL SAGDDACDVRA YFTTPIFVNAAPHIGHLYSALLAD  
ALCRHRRLRGPSTAATRFSTGTDEHGLKIQQAATAGLAPTELCDRVSEQFQQLFQEAGISCTDFIRTT  
ARHRVAVQHFVGVLKSRGLLYKGVYEGWYCASDECFLEAKVTQQPGPSGDSFPVSLESGHPVSWTKEEN  
YIFRLSQFRKPLQRWLRGNPQAITPEPFHHVVLQWLDEELPDLSVSRSSH LHWGIPVPGDDSQTIYVWL  
DALVNYLTVIGYPNAEFKSWWPATSHIIGKDILKFHAIYWPAFLLGAGMSPPQRCVHSHWTVCGQKMSK  
SLGNVVDPR TCLNRYTVDGFRYFLLRQGVPNWDCDYDEKVKLLNSELADALGLLNRCTAKRINPSET  
YPAFCTTCFPSEPLVGPVRAQAEDYALVSAVATLPKQVADHYDNFRIYKALEAVSSCVRQTNGFVQRH  
APWKLNWESPVDAPWLGTVLHVALECLR VFGTLLQPVTPLADKLLSRLGVSASERSLGELYFLPRFYGH  
PCPFEGRRLLGPETGLLFPRLDQSRTWLVKAHRT

TRTRPLEQKLISEEDLAANDILDYKDDDDKV

|                |  |
|----------------|--|
| Tag:           | C-Myc/DDK  |
| Predicted MW:  | 64.6 kDa   |
| Concentration: | >0.05 µg/µL as determined by microplate BCA method   |
| Purity:        | > 80% as determined by SDS-PAGE and Coomassie blue staining  |
| Buffer:        | 25 mM Tris-HCl, 100 mM glycine, pH 7.3, 10% glycerol   |
| Preparation:   | Recombinant protein was captured through anti-DDK affinity column followed by conventional chromatography steps.                                     |
| Note:          | For testing in cell culture applications, please filter before use. Note that you may experience some loss of protein during the filtration process. |
| Storage:       | Store at -80°C.  |



[View online »](#)

**Stability:** Stable for 12 months from the date of receipt of the product under proper storage and handling conditions. Avoid repeated freeze-thaw cycles.

**RefSeq:** [NP\\_612404](#)

**Locus ID:** 92935

**UniProt ID:** [Q96GW9](#)

**RefSeq Size:** 3102

**Cytogenetics:** 2q33.1

**RefSeq ORF:** 1779

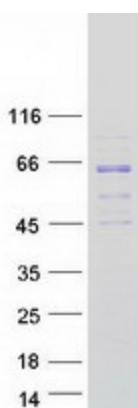
**Synonyms:** COXPD25; MetRS; mtMetRS

**Summary:** This gene produces a mitochondrial methionyl-tRNA synthetase protein that is encoded by the nuclear genome and imported to the mitochondrion. This protein likely functions as a monomer and is predicted to localize to the mitochondrial matrix. Mutations in this gene are associated with the autosomal recessive neurodegenerative disease spastic ataxia-3 (SPAX3). [provided by RefSeq, Apr 2014]

**Protein Families:** Druggable Genome

**Protein Pathways:** Aminoacyl-tRNA biosynthesis, Selenoamino acid metabolism

### Product images:



Coomassie blue staining of purified MARS2 protein (Cat# TP324966). The protein was produced from HEK293T cells transfected with MARS2 cDNA clone (Cat# [RC224966]) using MegaTran 2.0 (Cat# [TT210002]).