

Product datasheet for **TP324178**

Alkaline Phosphatase (ALPI) (NM_001631) Human Recombinant Protein

Product data:

Product Type: Recombinant Proteins

Description: Recombinant protein of human alkaline phosphatase, intestinal (ALPI), 20 µg

Species: Human

Expression Host: HEK293T

Expression cDNA >RC224178 representing NM_001631

Clone or AA **Red**=Cloning site **Green**=Tags(s)

Sequence:

MQGPWVLLLLGLRLQLSLGVIPAEENPAFWNRQAAEALDAAKKLQPIQKVAKNLILFLGDGLGVPTVTA
TRILKGQKNGKLGPEPLAMDRFPYLALSPTYNVDRQVPDSAATATAYLCGVKANFQTIGLSAAARFNQC
NTTRGNEVISVMNRAKQAGKSVGWVTTTRVQHASPAGTYAHTVNRNWWSDADMPASARQEGCQDIATQLI
SNMDDIVILGGGRKYMFPMTDPPEYPADASQNGIRLDGKNLVQEWLAKHQGAWYVWNRTELMQASLDQS
VTHLMGLFEPGDTKYEIHRDPTLDPPLMEMTEAALRLLSRNPRGFYLFVEGGRIDHGHHEGVAYQALTEA
VMFDDAIERAGQLTSEEDTLTLVTADHSHVFSFGGYTLRGSSIFGLAPSKAQDSKAYTSILYGNPGYVF
NSGVRPDVNESESGSPDYQQAAVPLSSETHGGEDVAVFARGPQAHLVHGVQEQSFVAHVMAFAACLEPY
TACDLAPPACTTDAHPVAASLPLLAGTLLLLGASAAP

TRTRPLEQKLISEEDLAANDILDYKDDDDKV

Tag: C-Myc/DDK

Predicted MW: 54.7 kDa

Concentration: >0.1 µg/µL as determined by microplate BCA method

Purity: > 80% as determined by SDS-PAGE and Coomassie blue staining

Buffer: 25 mM Tris-HCl, 100 mM glycine, pH 7.3, 10% glycerol

Preparation: Recombinant protein was captured through anti-DDK affinity column followed by conventional chromatography steps.

Note: For testing in cell culture applications, please filter before use. Note that you may experience some loss of protein during the filtration process.

Storage: Store at -80°C.

Stability: Stable for 12 months from the date of receipt of the product under proper storage and handling conditions. Avoid repeated freeze-thaw cycles.



[View online »](#)

RefSeq: [NP_001622](#)

Locus ID: 248

UniProt ID: [P09923](#), [A0A024R4A2](#)

RefSeq Size: 2516

Cytogenetics: 2q37.1

RefSeq ORF: 1584

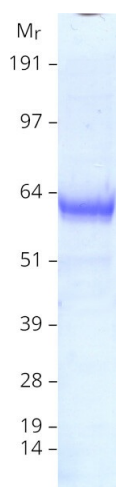
Synonyms: IAP

Summary: There are at least four distinct but related alkaline phosphatases: intestinal, placental, placental-like, and liver/bone/kidney (tissue non-specific). The intestinal alkaline phosphatase gene encodes a digestive brush-border enzyme. This enzyme is a component of the gut mucosal defense system and is thought to function in the detoxification of lipopolysaccharide, and in the prevention of bacterial translocation in the gut. [provided by RefSeq, Dec 2014]

Protein Families: Druggable Genome

Protein Pathways: Folate biosynthesis, Metabolic pathways

Product images:



Coomassie blue staining of purified ALPI protein (Cat# TP324178). The protein was produced from HEK293T cells transfected with ALPI cDNA clone (Cat# [RC224178]) using MegaTran 2.0 (Cat# [TT210002]).