

## Product datasheet for **TP324051**

### TMS1 (PYCARD) (NM\_145182) Human Recombinant Protein

#### Product data:

Product Type:	Recombinant Proteins
Description:	Recombinant protein of human PYD and CARD domain containing (PYCARD), transcript variant 2, 20 µg
Species:	Human
Expression Host:	HEK293T
Expression cDNA Clone or AA Sequence:	Recombinant protein was produced with TrueORF clone, RC224051.
Tag:	C-Myc/DDK
Predicted MW:	19.8 kDa
Concentration:	>0.05 µg/µL as determined by microplate BCA method
Purity:	> 80% as determined by SDS-PAGE and Coomassie blue staining
Buffer:	25 mM Tris-HCl, 100 mM glycine, pH 7.3, 10% glycerol
Preparation:	Recombinant protein was captured through anti-DDK affinity column followed by conventional chromatography steps.
Note:	For testing in cell culture applications, please filter before use. Note that you may experience some loss of protein during the filtration process.
Storage:	Store at -80°C.
Stability:	Stable for 12 months from the date of receipt of the product under proper storage and handling conditions. Avoid repeated freeze-thaw cycles.
RefSeq:	<a href="#">NP_660183</a>
Locus ID:	29108
UniProt ID:	<a href="#">Q9ULZ3</a>
RefSeq Size:	725
Cytogenetics:	16p11.2
RefSeq ORF:	528
Synonyms:	ASC; CARD5; TMS; TMS-1; TMS1



[View online »](#)

**Summary:**

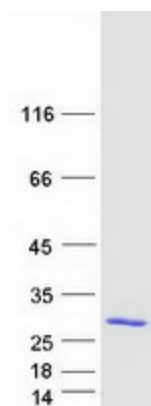
This gene encodes an adaptor protein that is composed of two protein-protein interaction domains: a N-terminal PYRIN-PAAD-DAPIN domain (PYD) and a C-terminal caspase-recruitment domain (CARD). The PYD and CARD domains are members of the six-helix bundle death domain-fold superfamily that mediates assembly of large signaling complexes in the inflammatory and apoptotic signaling pathways via the activation of caspase. In normal cells, this protein is localized to the cytoplasm; however, in cells undergoing apoptosis, it forms ball-like aggregates near the nuclear periphery. Two transcript variants encoding different isoforms have been found for this gene. [provided by RefSeq, Jul 2008]

**Protein Families:**

Druggable Genome

**Protein Pathways:**

Cytosolic DNA-sensing pathway, NOD-like receptor signaling pathway

**Product images:**

Coomassie blue staining of purified PYCARD protein (Cat# TP324051). The protein was produced from HEK293T cells transfected with PYCARD cDNA clone (Cat# [RC224051]) using MegaTran 2.0 (Cat# [TT210002]).