

## Product datasheet for TP323013M

### CD10 (MME) (NM\_000902) Human Recombinant Protein

#### Product data:

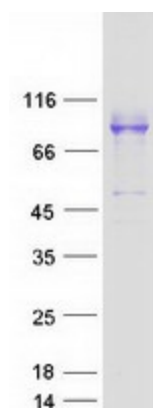
<b>Product Type:</b>	Recombinant Proteins
<b>Description:</b>	Recombinant protein of human membrane metallo-endopeptidase (MME), transcript variant 1, 100 µg
<b>Species:</b>	Human
<b>Expression Host:</b>	HEK293T
<b>Expression cDNA Clone or AA Sequence:</b>	>RC223013 representing NM_000902 Red=Cloning site Green=Tags(s)
	<p>MGKSESQMDITDINTPKPKKKQRWTPLEISLSVLVLLLIIAVTMIALYATYDDGICKSSDCIKSAARLI            QNMDATTEPCTDFFKYACGGWLKRNVIPETSSRYGNFDILRDELEVVLKDLVLEPKTEDIVAVQKAKALY            RSCINESAIDSRGGEPLLKLLPDIYGWPVATENWEQKYGASWTAEKAIQNLNSKYGKKVLINLFGTDDK            NSVNHVIHIDQPRLGPSRDYECTGIYKEACTAYVDFMISVARLIRQEERLPIDENQLALEMNKVMLE            KEIANATAKPEDRNDPMLLYNKMTLAQIQNNFSLEINGKPFWSLNFNEIMSTVNSITNEEDVVVYAPE            YLTKLKPIITKYSARDLQNLMSWRFIMDLVSSLSRTRYKESRNAFRKALYGTTSETATWRRCANVYVNGNME            NAVGRLYVEAAFAGESKHVVEDLIAQIREVFIQTLDDLTWMDAETKKRAEEKALAIKERIGYPDDIVSND            NKLNNLEYLELNKEDYFENIIQNLKFSQSKQLKREKVDKDEWISGAAVVNAFYSSGRNQIVFPAGIL            QPPFFSAQSNLSNYGGIGMIGHEITHGFDDNGRNFNKGDLVDWWTQQSASNFKEQSQCMVYQYGNFS            WDLAGGQHLNGINTLGENIADNGGLGQAYRAYQNYIKNGEEKLLPGLDLNHNKQLFFLNFAQVWCGTYRP            EYAVNSIKTDVHSPGNFRIIGTLQNSAEFSEAFHCRKNSYMNPEKKCRVW</p> <p>TRTRPLEQKLISEEDLAANDILDYKDDDDKV</p>
<b>Tag:</b>	C-Myc/DDK
<b>Predicted MW:</b>	85.3 kDa
<b>Concentration:</b>	>0.05 µg/µL as determined by microplate BCA method
<b>Purity:</b>	> 80% as determined by SDS-PAGE and Coomassie blue staining
<b>Buffer:</b>	25 mM Tris-HCl, 100 mM glycine, pH 7.3, 10% glycerol
<b>Preparation:</b>	Recombinant protein was captured through anti-DDK affinity column followed by conventional chromatography steps.
<b>Note:</b>	For testing in cell culture applications, please filter before use. Note that you may experience some loss of protein during the filtration process.



[View online »](#)

<b>Storage:</b>	Store at -80°C.
<b>Stability:</b>	Stable for 12 months from the date of receipt of the product under proper storage and handling conditions. Avoid repeated freeze-thaw cycles.
<b>RefSeq:</b>	<a href="#">NP_000893</a>
<b>Locus ID:</b>	4311
<b>UniProt ID:</b>	<a href="#">P08473</a>
<b>RefSeq Size:</b>	5595
<b>Cytogenetics:</b>	3q25.2
<b>RefSeq ORF:</b>	2250
<b>Synonyms:</b>	CALLA; CD10; CMT2T; NEP; SCA43; SFE
<b>Summary:</b>	The protein encoded by this gene is a type II transmembrane glycoprotein and a common acute lymphocytic leukemia antigen that is an important cell surface marker in the diagnosis of human acute lymphocytic leukemia (ALL). The encoded protein is present on leukemic cells of pre-B phenotype, which represent 85% of cases of ALL. This protein is not restricted to leukemic cells, however, and is found on a variety of normal tissues. The protein is a neutral endopeptidase that cleaves peptides at the amino side of hydrophobic residues and inactivates several peptide hormones including glucagon, enkephalins, substance P, neurotensin, oxytocin, and bradykinin. [provided by RefSeq, Aug 2017]
<b>Protein Families:</b>	Druggable Genome, Protease, Transmembrane
<b>Protein Pathways:</b>	Alzheimer's disease, Hematopoietic cell lineage, Renin-angiotensin system

### Product images:



Coomassie blue staining of purified MME protein (Cat# [TP323013]). The protein was produced from HEK293T cells transfected with MME cDNA clone (Cat# [RC223013]) using MegaTran 2.0 (Cat# [TT210002]).