

Product datasheet for TP323013

CD10 (MME) (NM_000902) Human Recombinant Protein

Product data:

Product Type: Recombinant Proteins
Description: Recombinant protein of human membrane metallo-endopeptidase (MME), transcript variant 1, 20 µg
Species: Human
Expression Host: HEK293T
Expression cDNA Clone or AA Sequence: >RC223013 representing NM_000902
Red=Cloning site Green=Tags(s)

MGKSESQMDITDINTPKPKKKQRWTPLEISLSVLVLLLIIAVTMIALYATYDDGICKSSDCIKSAARLI
 QNMDATTEPCTDFFKYACGGWLKRNVIPETSSRYGNFDILRDELEVVLKDLVLEPKTEDIVAVQKAKALY
 RSCINESAIDSRGGPELLKLLPDIYGWPVATENWEQKYGASWTAEKAIQAQLNSKYGKKVLINLFGTDDK
 NSVNHVIHIDQPRGLPSRDYECTGIYKEACTAYVDFMISVARLIRQEERLPIDENQLALEMNKVMLE
 KEIANATAKPEDRNDPMLLYNKMTLAQIQNNFSLEINGKPFWSLNFNFTNEIMSTVNSITNEEDVVVYAPE
 YLTKLKPIITKYSARDLQNLMSWRFIMDLVSSLSRTRYKESRNAFRKALYGTTSETATWRRCANVYVNGNME
 NAVGRLYVEAAFAGESKHVVEDLIAQIREVFIQTLDDLTWMDAETKKRAEEKALAIKERIGYPDDIVSND
 NKLNNLEYLELNKEDYFENIIQNLKFSQSKQLKREKVDKDEWISGAAVVNAFYSSGRNQIVFPAGIL
 QPPFFSAQSNLNYGGIGMIGHEITHGFDDNGRNFNKGDLVDWWTQQSASNFKEQSQCMVYQYGNFS
 WDLAGGQHLNGINTLGENIADNGGLGQAYRAYQNYIKNGEEKLLPGLDLNHKQLFFLNFAQVWCGTYRP
 EYAVNSIKTDVHSPGNFRIIGTLQNSAEFSEAFHCRKNSYMNPEKKCRVW

TRTRPLEQKLISEEDLAANDILDYKDDDDKV

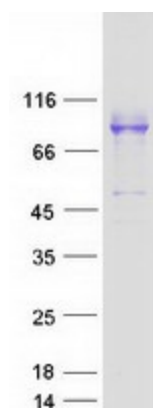
Tag: C-Myc/DDK
Predicted MW: 85.3 kDa
Concentration: >0.05 µg/µL as determined by microplate BCA method
Purity: > 80% as determined by SDS-PAGE and Coomassie blue staining
Buffer: 25 mM Tris-HCl, 100 mM glycine, pH 7.3, 10% glycerol
Preparation: Recombinant protein was captured through anti-DDK affinity column followed by conventional chromatography steps.
Note: For testing in cell culture applications, please filter before use. Note that you may experience some loss of protein during the filtration process.



[View online »](#)

Storage:	Store at -80°C.
Stability:	Stable for 12 months from the date of receipt of the product under proper storage and handling conditions. Avoid repeated freeze-thaw cycles.
RefSeq:	NP_000893
Locus ID:	4311
UniProt ID:	P08473
RefSeq Size:	5595
Cytogenetics:	3q25.2
RefSeq ORF:	2250
Synonyms:	CALLA; CD10; CMT2T; NEP; SCA43; SFE
Summary:	The protein encoded by this gene is a type II transmembrane glycoprotein and a common acute lymphocytic leukemia antigen that is an important cell surface marker in the diagnosis of human acute lymphocytic leukemia (ALL). The encoded protein is present on leukemic cells of pre-B phenotype, which represent 85% of cases of ALL. This protein is not restricted to leukemic cells, however, and is found on a variety of normal tissues. The protein is a neutral endopeptidase that cleaves peptides at the amino side of hydrophobic residues and inactivates several peptide hormones including glucagon, enkephalins, substance P, neurotensin, oxytocin, and bradykinin. [provided by RefSeq, Aug 2017]
Protein Families:	Druggable Genome, Protease, Transmembrane
Protein Pathways:	Alzheimer's disease, Hematopoietic cell lineage, Renin-angiotensin system

Product images:



Coomassie blue staining of purified MME protein (Cat# TP323013). The protein was produced from HEK293T cells transfected with MME cDNA clone (Cat# [RC223013]) using MegaTran 2.0 (Cat# [TT210002]).