

Product datasheet for TP319781

AMOTL2 (NM_016201) Human Recombinant Protein

Product data:

Product Type:	Recombinant Proteins
Description:	Recombinant protein of human angiotenin like 2 (AMOTL2), 20 µg
Species:	Human
Expression Host:	HEK293T
Expression cDNA	>RC219781 representing NM_016201
Clone or AA Sequence:	Red=Cloning site Green=Tags(s)

MRTLEDSSGTVLHRLIQEQLRYGNLTETRTLLAIQQQALRGGAGTGGTGSQPASLEILAPEDSQVLQQAT
RQEPQGGQEHQGGENHLAENTLYRLCPQPSKGEELPTYEEAKAHSQYYAAQAGTRPHAGDRDPRGAPGGS
RRQDEALRELRHGHVRSLSERLLQLSLERNGARAPSHMSSSHSFPQLARNQQGPPLRGPPAEGPESRGPP
PQYPHVLAHETTTAVTDPYRARGSPHFQHAEVRIQLQAQVPPVFLQQQQYQYLQSSQEHPPPPHPAAL
GHGPLSSLSPPAVEGPVSAQASSATSGSAHLAQMEAVLRENARLQRDNERLQRELESSAEKAGRIEKLES
EIQLRSEAHESLTRASSKREALEKTMRNKMDSEMRRLLQDFNRDLRERLESANRRLLASKTQEAQAGSQDMV
AKLLAQSYEQQEQEKLEREMALLRGAIEDQRRRAELLEQALGNAQGRAARAEELRKKQAYVEKVERLQ
QALGQLQAACEKREQLRLRTRLEQLKALRAQQRQAGAPGGSSGSGSPELSALRLSEQLREKEEQIL
ALEADMTKWEQKYLEERAMRQFAMDAAATAAQRDRTLIRHSPQSPSSSFNEGLLTGGHRHQEMESRLK
VLHAQILEKDAVIKVLQQRSRDPGKAIQGSLRPAKSVPSVFAAAAAGTQGWQGLSSSERQTADAPARLT
TADRAPTEEPVWTAPPAAHAKHGSRDGSTQTEGPPDSTSTCLPPEPDSLLGCSSSQRAASLDSVATSRVQ
DLSDMVEILI

TRTRPLEQKLISEEDLAANDILDYKDDDDKV

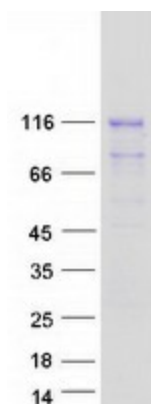
Tag:	C-Myc/DDK
Predicted MW:	85.7 kDa
Concentration:	>0.05 µg/µL as determined by microplate BCA method
Purity:	> 80% as determined by SDS-PAGE and Coomassie blue staining
Buffer:	25 mM Tris-HCl, 100 mM glycine, pH 7.3, 10% glycerol
Preparation:	Recombinant protein was captured through anti-DDK affinity column followed by conventional chromatography steps.
Note:	For testing in cell culture applications, please filter before use. Note that you may experience some loss of protein during the filtration process.



[View online »](#)

Storage:	Store at -80°C.
Stability:	Stable for 12 months from the date of receipt of the product under proper storage and handling conditions. Avoid repeated freeze-thaw cycles.
RefSeq:	NP_057285
Locus ID:	51421
UniProt ID:	Q9Y2J4
RefSeq Size:	4984
Cytogenetics:	3q22.2
RefSeq ORF:	2340
Synonyms:	LCCP
Summary:	Angiomotin is a protein that binds angiostatin, a circulating inhibitor of the formation of new blood vessels (angiogenesis). Angiomotin mediates angiostatin inhibition of endothelial cell migration and tube formation in vitro. The protein encoded by this gene is related to angiomotin and is a member of the motin protein family. Alternative splicing results in multiple transcript variants of this gene. [provided by RefSeq, Jul 2013]

Product images:



Coomassie blue staining of purified AMOTL2 protein (Cat# TP319781). The protein was produced from HEK293T cells transfected with AMOTL2 cDNA clone (Cat# [RC219781]) using MegaTran 2.0 (Cat# [TT210002]).