

## Product datasheet for TP319158

### C4BPB (NM\_001017364) Human Recombinant Protein

#### Product data:

|                                       |   |
|---------------------------------------|---|
| Product Type:                         | Recombinant Proteins  |
| Description:                          | Recombinant protein of human complement component 4 binding protein, beta (C4BPB), transcript variant 2, 20 µg  |
| Species:                              | Human   |
| Expression Host:                      | HEK293T   |
| Expression cDNA Clone or AA Sequence: | >RC219158 representing NM_001017364<br>Red=Cloning site Green=Tags(s)   |
|                                       | MFFWCACCLMVAWRVSASDEHCPPELPPVDNSIFVAKEVEGQILGTYVCIKGYHLVGKKTLCFNASKKEDN<br>TTTECRLGHCPDPLVNGEFSSSGPVNVSDKITFMCNDHYILKGSNRSQCLEDHTWAPPFPICKSRDCDP<br>PGNPVHGYFEGNFTLGSTISYYCEDRYLVGVQEQQCVDGEWSSALPVCKLIQEAPKPECEKALLAFQE<br>SKNLCEAMENFMQQLKESGMTMEELKYSLELKKALAKLL |
|                                       | TRTRPLEQKLISEEDLAANDILDYKDDDDKV   |
| Tag:                                  | C-Myc/DDK   |
| Predicted MW:                         | 26.2 kDa  |
| Concentration:                        | >0.05 µg/µL as determined by microplate BCA method  |
| Purity:                               | > 80% as determined by SDS-PAGE and Coomassie blue staining   |
| Buffer:                               | 25 mM Tris-HCl, 100 mM glycine, pH 7.3, 10% glycerol  |
| Preparation:                          | Recombinant protein was captured through anti-DDK affinity column followed by conventional chromatography steps.  |
| Note:                                 | For testing in cell culture applications, please filter before use. Note that you may experience some loss of protein during the filtration process.  |
| Storage:                              | Store at -80°C.   |
| Stability:                            | Stable for 12 months from the date of receipt of the product under proper storage and handling conditions. Avoid repeated freeze-thaw cycles.   |
| RefSeq:                               | <a href="#">NP_001017364</a>  |
| Locus ID:                             | 725   |



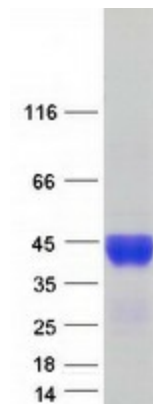
[View online »](#)

UniProt ID: [P20851](#)  
RefSeq Size: 1128  
Cytogenetics: 1q32.1  
RefSeq ORF: 753  
Synonyms: C4BP

**Summary:** This gene encodes a member of a superfamily of proteins composed predominantly of tandemly arrayed short consensus repeats of approximately 60 amino acids. A single, unique beta-chain encoded by this gene assembles with seven identical alpha-chains into the predominant isoform of C4b-binding protein, a multimeric protein that controls activation of the complement cascade through the classical pathway. C4b-binding protein has a regulatory role in the coagulation system also, mediated through the beta-chain binding of protein S, a vitamin K-dependent protein that serves as a cofactor of activated protein C. The genes encoding both alpha and beta chains are located adjacent to each other on human chromosome 1 in the regulator of complement activation gene cluster. Alternative splicing gives rise to multiple transcript variants. [provided by RefSeq, Jul 2008]

**Protein Pathways:** Complement and coagulation cascades

### Product images:



Coomassie blue staining of purified C4BPB protein (Cat# TP319158). The protein was produced from HEK293T cells transfected with C4BPB cDNA clone (Cat# [RC219158]) using MegaTran 2.0 (Cat# [TT210002]).