

Product datasheet for TP319147

RASGRF1 (NM_002891) Human Recombinant Protein

Product data:

Product Type:	Recombinant Proteins
Description:	Recombinant protein of human Ras protein-specific guanine nucleotide-releasing factor 1 (RASGRF1), transcript variant 1, 20 µg
Species:	Human
Expression Host:	HEK293T
Expression cDNA Clone or AA Sequence:	>RC219147 representing NM_002891 Red=Cloning site Green=Tags(s)

MQKGIRLNDGHVASLGLLARKDGRKGYLSKRSSDNTKWQTKWFALLQNLLFYFESDSSSRPSGLYLLEG
CVCDRAPSPKPALSAKEPLEKQHYFTVNFHENQKALELRTEDAKDCDEWVAIAHASYRTLATEHEALM
QKYLHLLQIVETEKTVAKQLRQQIEDGEIEIERLKAETSLLKDNERIQSTQTVAPNDESDIKKIKVQ
SFLRGWLCRRKWKTIQDYIRSPHADSMRKRNVVFSMLEAEAEVYQQLHILVNNFLRPLRMAASSKKPP
ITHDDVSSIFLNSETIMFLHQIFYQGLKARISSWPTLVLADLFDILLPMLNIYQEFVRNHQYSLQILAH
KQNRDFDKLLKHYEAKPDCEERTLETFLTYPMFQIPRYILTLHELLAHTPHEHVERNSLDYAKSKLEELS
RIMHDEVSETENIRKNLAIERMIEGCEILLDTSQTFVRQGLIQVPMSEKGIKTRGRLGSLKKEGER
QCFLFSKHLIICTRGSGGKLHLTKNGVISLIDCTLLEPESTEEEAAGSGQDIDHLDKIGVEPKDSPFF
TVILVASSRQEKAAWTSDISQCVDNIRCNGLMMNAFEENSKVTVPQMIKRTREGTREAEMSRSDASLYCD
DVIDRFSKTMNSCKVLQIRYASVERLLERLTDLRFLSIDFLNFTLHSHYRVFTTAIVLVDKLTITYKKPIS
AIPARWLRSELELLFASGQNNKLLYGEPKSPRATRFSSPPPLSITKTSSPSRRRKLNLNIPITGGKAL
DLAALSCNSNGYTSMYSAMPFSKATLDTSKLYVSSSFTNKIPDEGDTTPEKPEDPSALSQKSSSEVSMRE
ESDIDQNSDDGDTETSPTKSPTPKSVKNKNSSEFPLFSYNNGVVMTSCRELDNNRSALSAASAFAIAT
AGANEGTPNKEKYRRMSLASAGFPDQRNGDKEFVIRRAATNRVLNVLRHVWSKHSQDFETNDELKCKVI
GFLEEVMDPELLTQERKAAANIIRTLTQEDPGDNQITLEEITQMAEGVKAEPFENHSAIEAQLTLLD
HLVFKKIPYEEFFGQGWKLEKNERTPYIMKTTKHFNDISNLIASEIIRNEDINARVSAIEKWWAVADIC
RCLHNYNAVLEITSSMNRSAIFRLKKTWLKVSQTKALIDKLQKLVSEGRFKNLREALKNCPPCVPYL
GMYLTDLAFIEEGTPNYTEDGLVNFSKMRMISHIIRQFQQTAYKIEHQAKVTQYLLDQSFVMDDEESL
YESSLRIEPKLPT

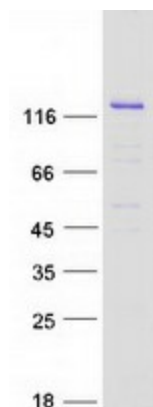
TRTRPLEQKLISEEDLAANDILDYKDDDDKV

Tag:	C-Myc/DDK
Predicted MW:	145.1 kDa



[View online »](#)

Concentration:	>0.05 µg/µL as determined by microplate BCA method
Purity:	> 80% as determined by SDS-PAGE and Coomassie blue staining
Buffer:	25 mM Tris-HCl, 100 mM glycine, pH 7.3, 10% glycerol
Preparation:	Recombinant protein was captured through anti-DDK affinity column followed by conventional chromatography steps.
Note:	For testing in cell culture applications, please filter before use. Note that you may experience some loss of protein during the filtration process.
Storage:	Store at -80°C.
Stability:	Stable for 12 months from the date of receipt of the product under proper storage and handling conditions. Avoid repeated freeze-thaw cycles.
RefSeq:	NP_002882
Locus ID:	5923
UniProt ID:	Q13972 , A8K270
RefSeq Size:	4022
Cytogenetics:	15q25.1
RefSeq ORF:	3819
Synonyms:	CDC25; CDC25L; GNRP; GRF1; GRF55; H-GRF55; PP13187; ras-GRF1
Summary:	The protein encoded by this gene is a guanine nucleotide exchange factor (GEF) similar to the <i>Saccharomyces cerevisiae</i> CDC25 gene product. Functional analysis has demonstrated that this protein stimulates the dissociation of GDP from RAS protein. The studies of the similar gene in mouse suggested that the Ras-GEF activity of this protein in brain can be activated by Ca ²⁺ influx, muscarinic receptors, and G protein beta-gamma subunit. Mouse studies also indicated that the Ras-GEF signaling pathway mediated by this protein may be important for long-term memory. Alternatively spliced transcript variants encoding distinct isoforms have been reported. [provided by RefSeq, Mar 2009]
Protein Families:	Druggable Genome
Protein Pathways:	Focal adhesion, MAPK signaling pathway

Product images:

Coomassie blue staining of purified RASGRF1 protein (Cat# TP319147). The protein was produced from HEK293T cells transfected with RASGRF1 cDNA clone (Cat# [RC219147]) using MegaTran 2.0 (Cat# [TT210002]).