

## Product datasheet for **TP318801**

### **CAMK2D (NM\_172115) Human Recombinant Protein**

#### **Product data:**

<b>Product Type:</b>	Recombinant Proteins
<b>Description:</b>	Recombinant protein of human calcium/calmodulin-dependent protein kinase II delta (CAMK2D), transcript variant 4, 20 µg
<b>Species:</b>	Human
<b>Expression Host:</b>	HEK293T
<b>Expression cDNA Clone or AA Sequence:</b>	>RC218801 representing NM_172115 <b>Red</b> =Cloning site <b>Green</b> =Tags(s)

MASTTTCTRFTDEYQLFEELGKGAFSVVRRCKIPTGQEYAAKIINTKCLSARDHQKLEREARICRLLKH  
PNIVRLHDSISEEGFHYLVFDLVTGGELFEDIVAREYYSEADASHCIQQILESVDNHCHLNGIVHRDLKPE  
NLLASKSKGA AVKLADFLAIEVQGDQQA WFGFAGTPGYLSPEVLRKDPYKGPVDMWACGVILYILLV  
YPPFWEDEDQHRLYQQIKAGAYDFPSPEWDTVTPEAKDLINKMLTINPAKRITASEALKHPWICQRSTVAS  
MMHRQETVDCLKKFNARRKLGAILTTMLATRNFSAAKSLKKPDGVKESTESSNTTIEDVDKARKQEI  
IKVTEQLIEAINNGDFEAYTKICDPGLTAFEPEALGNLVEGMDFHRFYFENALSKSNKPIHTIILNPHVH  
LVGDDAACIAYIRLTQYMDGSGMPKTMQSEETRVWHRRDQKQNVHFHRSQSPTVPIK

**TRTRPLEQKLISEEDLAANDILDYKDDDDKV**

<b>Tag:</b>	C-Myc/DDK
<b>Predicted MW:</b>	53.9 kDa
<b>Concentration:</b>	>0.05 µg/µL as determined by microplate BCA method
<b>Purity:</b>	> 80% as determined by SDS-PAGE and Coomassie blue staining
<b>Buffer:</b>	25 mM Tris-HCl, 100 mM glycine, pH 7.3, 10% glycerol
<b>Preparation:</b>	Recombinant protein was captured through anti-DDK affinity column followed by conventional chromatography steps.
<b>Note:</b>	For testing in cell culture applications, please filter before use. Note that you may experience some loss of protein during the filtration process.
<b>Storage:</b>	Store at -80°C.
<b>Stability:</b>	Stable for 12 months from the date of receipt of the product under proper storage and handling conditions. Avoid repeated freeze-thaw cycles.



[View online »](#)

RefSeq: [NP\\_742113](#)

Locus ID: 817

UniProt ID: [Q13557](#), [A8MVS8](#)

RefSeq Size: 2151

Cytogenetics: 4q26

RefSeq ORF: 1434

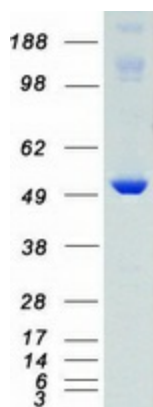
Synonyms: CAMKD

**Summary:** The product of this gene belongs to the serine/threonine protein kinase family and to the Ca(2+)/calmodulin-dependent protein kinase subfamily. Calcium signaling is crucial for several aspects of plasticity at glutamatergic synapses. In mammalian cells, the enzyme is composed of four different chains: alpha, beta, gamma, and delta. The product of this gene is a delta chain. Alternative splicing results in multiple transcript variants encoding distinct isoforms. Distinct isoforms of this chain have different expression patterns.[provided by RefSeq, Nov 2008]

**Protein Families:** Druggable Genome, Protein Kinase

**Protein Pathways:** Calcium signaling pathway, ErbB signaling pathway, Glioma, GnRH signaling pathway, Long-term potentiation, Melanogenesis, Neurotrophin signaling pathway, Olfactory transduction, Oocyte meiosis, Wnt signaling pathway

### Product images:



Coomassie blue staining of purified CAMK2D protein (Cat# TP318801). The protein was produced from HEK293T cells transfected with CAMK2D cDNA clone (Cat# [RC218801]) using MegaTran 2.0 (Cat# [TT210002]).