

## Product datasheet for TP317003M

### MET (NM\_000245) Human Recombinant Protein

#### Product data:

Product Type:	Recombinant Proteins
Description:	Recombinant protein of human met proto-oncogene (hepatocyte growth factor receptor) (MET), transcript variant 2, 100 µg
Species:	Human
Expression Host:	HEK293T
Expression cDNA Clone or AA Sequence:	>RC217003 representing NM_000245 Red=Cloning site Green=Tags(s)

MKAPAVLAPGILVLLFTLVQRSNGECKEALAKSEMNVNMKYQLPNFTAETPIQNVLHEHHIFLGATNYI  
YVLNEEDLQKVAEYKTGPVLEHPDCFCPCQDCSSKANLSSGGVWKNINMALVVDTYDDQLISCGSVNRGT  
CQRHVFPNHNTADIQSEVHCIFSPQIEEPSQPCDCVVSALGAKVLSSVKDRFINFFVNGTINSSYFPDHP  
LHSISVRRLLKTKDGMFLTDQSYIDVLEPFRDSYPIKYVHAFESNNFIYFLTVQRETLDAQTFHTRIIR  
FCSINSGLSHYMEMPLECILTEKRKRSTKKEVFNILQAAYVSKPGAQLARQIGASLNDLILFGVFAQSK  
PDSAEPMDRSAMCAFPKYVNDFFNKIVNKNVNRCLQHFYGPNEHCNFRNLLRNSSGCEARRDEYRTEF  
TTALQRVDLFGMGQFSEVLLTSISTFIKGLDITANLGTSEGRFMQVWVSRSGPSTPHVNFLLDSHPVSPEV  
IVEHTLNQNGYTLVITGKKITKIPLNGLGCRHFQSCSQCLSAPPFVQCGWCHDKCVRSEECLSGTWTQOI  
CLPAIYKVPNSAPLEGGTRLTICGWDFGFRNNKFDLKKTRVLLGNESCTLTSESTMNTLKCTVGPAM  
NKHFNMSIIISNGHGTTQYSTFSYVDPVITSISPKYGPAGGTLTGTGNYLNSGNSRHISIGGKTCTLK  
SVSNSILECYTPAQTISTEFAVKLKIDLANRETSIFSYPREDPIVYIEHPTKSFISGGSTITGVGKLNLSV  
SVPRMVINVHEAGRNFVACQHRNSNIEICCTPSLQQLNLQLPLKTKAFFMLDGLSKYFDLIYVHNVP  
FKPFKPMISMGNENVLEIKGNDIDPEAVKGEVLKVGNGSCENIHLHSEAVLCTVPNDLLKLNSLNIE  
WKQAISSTVLGKIVQPDQNFGLIAGVVSISTALLLLGFFLWLKRRKQIKDLGSELVRYDARVHTPHL  
DRLVSARSVPTTEMVSNESVDYRATFPEDQFPNSSQNGSCRQVQYPLTDMSPILTSGDSDISSPLLQNT  
VHIDLSALNPELVQAVQHVVIGPSSLIVHFNEVIGRHFVYHGTLLDNDGKKIHCVAKSLNRTDIGE  
VSQFLTEGIIMKDFSHPNVLSLLGICLRSEGSPLVLPYMKHGDRLNFIRNETHNPTVKDLIGFGLQVAK  
GMKYLASKKFVHRDLAARNCMLDEKFTVKVADFGGLARDMYDKEYSVHNKTGAKLPVKWMALESQTQKF  
TTKSDVWSFGVLLWELMTRGAPPYDPVNTFDITVYLLQGRLLQPEYCPDPLYEVMKLCWHPKAEMRPSF  
SELVSRISAIFSTFIGEHYVHVNATYVNVKCVAPYPSLLSSEDNADDEVDRPASFWETS

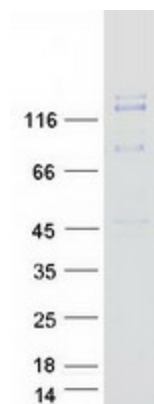
TRTRPLEQKLISEEDLAANDILDYKDDDDKV

Tag:	C-Myc/DDK
Predicted MW:	153 kDa



[View online »](#)

<b>Concentration:</b>	>0.05 µg/µL as determined by microplate BCA method
<b>Purity:</b>	> 80% as determined by SDS-PAGE and Coomassie blue staining
<b>Buffer:</b>	25 mM Tris-HCl, 100 mM glycine, pH 7.3, 10% glycerol
<b>Preparation:</b>	Recombinant protein was captured through anti-DDK affinity column followed by conventional chromatography steps.
<b>Note:</b>	For testing in cell culture applications, please filter before use. Note that you may experience some loss of protein during the filtration process.
<b>Storage:</b>	Store at -80°C.
<b>Stability:</b>	Stable for 12 months from the date of receipt of the product under proper storage and handling conditions. Avoid repeated freeze-thaw cycles.
<b>RefSeq:</b>	<a href="#">NP_000236</a>
<b>Locus ID:</b>	4233
<b>UniProt ID:</b>	<a href="#">P08581</a> , <a href="#">A0A024R759</a>
<b>RefSeq Size:</b>	6641
<b>Cytogenetics:</b>	7q31.2
<b>RefSeq ORF:</b>	4170
<b>Synonyms:</b>	AUTS9; c-Met; DFNB97; HGFR; RCCP2
<b>Summary:</b>	<p>This gene encodes a member of the receptor tyrosine kinase family of proteins and the product of the proto-oncogene MET. The encoded preproprotein is proteolytically processed to generate alpha and beta subunits that are linked via disulfide bonds to form the mature receptor. Further processing of the beta subunit results in the formation of the M10 peptide, which has been shown to reduce lung fibrosis. Binding of its ligand, hepatocyte growth factor, induces dimerization and activation of the receptor, which plays a role in cellular survival, embryogenesis, and cellular migration and invasion. Mutations in this gene are associated with papillary renal cell carcinoma, hepatocellular carcinoma, and various head and neck cancers. Amplification and overexpression of this gene are also associated with multiple human cancers. [provided by RefSeq, May 2016]</p>
<b>Protein Families:</b>	Druggable Genome, Protein Kinase, Transmembrane
<b>Protein Pathways:</b>	Adherens junction, Axon guidance, Colorectal cancer, Cytokine-cytokine receptor interaction, Endocytosis, Epithelial cell signaling in Helicobacter pylori infection, Focal adhesion, Melanoma, Pathways in cancer, Renal cell carcinoma

**Product images:**

Coomassie blue staining of purified MET protein (Cat# [TP317003]). The protein was produced from HEK293T cells transfected with MET cDNA clone (Cat# [RC217003]) using MegaTran 2.0 (Cat# [TT210002]).