

Product datasheet for TP317003L

MET (NM_000245) Human Recombinant Protein

Product data:

Product Type:	Recombinant Proteins
Description:	Recombinant protein of human met proto-oncogene (hepatocyte growth factor receptor) (MET), transcript variant 2, 1 mg
Species:	Human
Expression Host:	HEK293T
Expression cDNA Clone or AA Sequence:	>RC217003 representing NM_000245 Red=Cloning site Green=Tags(s)

MKAPAVLAPGILVLLFTLVQRSNGECKEALAKSEMNVNMKYQLPNFTAETPIQNVLHEHHIFLGATNYI
YVLNEEDLQKVAEYKTGPVLEHPDCFCPCQDCSSKANLSSGGVWKNINMALVVDTYDDQLISCGSVNRGT
CQRHVFPNHTADIQSEVHCIFSPQIEEPSQPCDCVVSALGAKVLSSVKDRFINFFVNGTINSSYFPDHP
LHSISVRRLLKTKDGMFLTDQSYIDVLPFRDSYPIKYVHAFESNNFIYFLTVQRETLDAQTFHTRIIR
FCSINSGLSHMEMPLECILTEKRKRSTKKEVFNILQAAYVSKPGAQLARQIGASLNDLILFGVFAQSK
PDSAEPMDRSAMCAFPKYVNDFFNKIVNKNVNRCLQHFYGPNEHCNFRNLLRNSSGCEARRDEYRTEF
TTALQRVDLFMGQFSEVLLTSISTFIKGLTIANLGTSEGRFMQVWVSRSGPSTPHVNFLLDSHPVSPEV
IVEHTLNQNGYTLVITGKKITKIPLNGLGCRHFQSCSQCLSAPPFVQCGWCHDKCVRSEECLSGTWTQOI
CLPAIYKVPNSAPLEGGTRLTICGWDFGFRNNKFDLKKTRVLLGNESCTLTSESTMNTLKCTVGPAM
NKHFNMSIIISNGHGTQYSTFSYVDPVITSISPKYGPMAGGTLTGTGNLNSGNSRHISIGGKTCTLK
SVSNSILECYTPAQTISTEFAVKLKIDLANRETSIFSYPREDPIVYIEHPTKSFISGGSTITGVGKLNLSV
SVPRMVINVHEAGRNFVACQHRNSNSEIICCTPSLQQLNLQLPLKTKAFFMLDGLSKYFDLIYVHNPV
FKPFKPMISMGNENVLEIKGNDIDPEAVKGEVLKVGNGKSCENIHLHSEAVLCTVPNDLLKLNSLNIE
WKQAISSTVLGKIVQPDQNFGLIAGVVSISTALLLLGFFLWLKRRKQIKDLGSELVRYDARVHTPHL
DRLVSARSVPTTEMVSNESVDYRATFPEDQFPNSSQNGSCRQVQYPLTDMSPILTSGDSDISSPLLQNT
VHIDLSALNPELVQAVQHVVIGPSSLIVHFNEVIGRHFVYHGTLLDNDGKKIHCVAKSLNRTDIGE
VSQFLTEGIIMKDFSHPNVLSLLGICLRSEGSPLVLPYMKHGDRLNFIRNETHNPTVKDLIGFGLQVAK
GMKYLASKKFVHRDLAARNCMLDEKFTVKVADFGGLARDMYDKEYSVHNKTGAKLPVKWMALESQTQKF
TTKSDVWSFGVLLWELMTRGAPPYDPVNTFDITVYLLQGRLLQPEYCPDPLYEVMKLCWHPKAEMRPSF
SELVSRISAIFSTFIGEHYVHVNATYVNVKCVAPYPSLLSSEDNADDEVDRPASFWETS

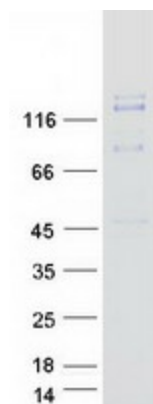
TRTRPLEQKLISEEDLAANDILDYKDDDDKV

Tag:	C-Myc/DDK
Predicted MW:	153 kDa



[View online »](#)

Concentration:	>0.05 µg/µL as determined by microplate BCA method
Purity:	> 80% as determined by SDS-PAGE and Coomassie blue staining
Buffer:	25 mM Tris-HCl, 100 mM glycine, pH 7.3, 10% glycerol
Preparation:	Recombinant protein was captured through anti-DDK affinity column followed by conventional chromatography steps.
Note:	For testing in cell culture applications, please filter before use. Note that you may experience some loss of protein during the filtration process.
Storage:	Store at -80°C.
Stability:	Stable for 12 months from the date of receipt of the product under proper storage and handling conditions. Avoid repeated freeze-thaw cycles.
RefSeq:	NP_000236
Locus ID:	4233
UniProt ID:	P08581 , A0A024R759
RefSeq Size:	6641
Cytogenetics:	7q31.2
RefSeq ORF:	4170
Synonyms:	AUTS9; c-Met; DFNB97; HGFR; RCCP2
Summary:	<p>This gene encodes a member of the receptor tyrosine kinase family of proteins and the product of the proto-oncogene MET. The encoded preproprotein is proteolytically processed to generate alpha and beta subunits that are linked via disulfide bonds to form the mature receptor. Further processing of the beta subunit results in the formation of the M10 peptide, which has been shown to reduce lung fibrosis. Binding of its ligand, hepatocyte growth factor, induces dimerization and activation of the receptor, which plays a role in cellular survival, embryogenesis, and cellular migration and invasion. Mutations in this gene are associated with papillary renal cell carcinoma, hepatocellular carcinoma, and various head and neck cancers. Amplification and overexpression of this gene are also associated with multiple human cancers. [provided by RefSeq, May 2016]</p>
Protein Families:	Druggable Genome, Protein Kinase, Transmembrane
Protein Pathways:	Adherens junction, Axon guidance, Colorectal cancer, Cytokine-cytokine receptor interaction, Endocytosis, Epithelial cell signaling in Helicobacter pylori infection, Focal adhesion, Melanoma, Pathways in cancer, Renal cell carcinoma

Product images:

Coomassie blue staining of purified MET protein (Cat# [TP317003]). The protein was produced from HEK293T cells transfected with MET cDNA clone (Cat# [RC217003]) using MegaTran 2.0 (Cat# [TT210002]).