

## Product datasheet for **TP315079M**

### ATG7 (NM\_006395) Human Recombinant Protein

#### Product data:

Product Type:	Recombinant Proteins
Description:	Recombinant protein of human ATG7 autophagy related 7 homolog ( <i>S. cerevisiae</i> ) (ATG7), transcript variant 1, 100 µg
Species:	Human
Expression Host:	HEK293T
Expression cDNA Clone or AA Sequence:	>RC215079 representing NM_006395 <b>Red</b> =Cloning site <b>Green</b> =Tags(s)

MAAATGDPGLSKLQFAPFSSALDVGFWHELTQKKLNEYRLDEAPKDIKGYYYNGDSAGLPARLTLEFSAF  
DMSAPTPARCCPAIGTLYNTNTLESFKTADKKLLLEQAANEIWESIKSGTALENPVLLNKFLLTFADLK  
KYHFYWFYCYPALCLPESLPLIQGPVGLDQRFSKQIEALECAYDNLCQTEGVTALPYFLIKYDENMVLV  
SLLKHYSDFQQRKITIGVYDPCNLAQYPGWPLRNFLVLAHRWSSSFQSVEVCFRDRTMQGARDVA  
HSIIFEVKLPEMAFSPDCPKAVGWENQKGGMGPRMVNLSECMDBKRLAESSVDLNLKLMCWRLVPTLDL  
DKVSVKCLLLGAGTLGCNVARTLMGWGVRHITFVDNAKISYSNPVRQPLYEFEDCLGGGKPKALAAADR  
LQKIFPGVNARGFNMSIPMPGHPVNFSSVTLEQARRDVEQLEQLIESHDVFLMMDTRESRWLPAVIAAS  
KRKLVINAALGFDTFVVMRHGLKPKKQAGDLCNHPVASADLLGSSLFANIPGYKLGCFNDVWVAPG  
DSTRDRTLDDQCTVSRPGLAVIAGALAVELMVSVLQHPEGGYAIASSSDDRMNEPPTSLGLVPHQIRGFL  
SRFDNVLPVSLAFDKCTACSSKVLQYEREGFNFLAKVFNSSHSFLEDLTGLTLLHQETQAAEIWDMSSD  
ETI

**TRTRPLEQKLISEEDLAANDILDYKDDDDKV**

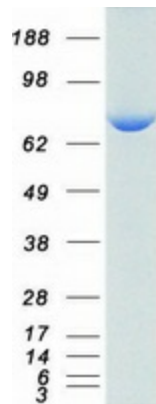
Tag:	C-Myc/DDK
Predicted MW:	77.8 kDa
Concentration:	>0.05 µg/µL as determined by microplate BCA method
Purity:	> 80% as determined by SDS-PAGE and Coomassie blue staining
Buffer:	25 mM Tris-HCl, 100 mM glycine, pH 7.3, 10% glycerol
Preparation:	Recombinant protein was captured through anti-DDK affinity column followed by conventional chromatography steps.
Note:	For testing in cell culture applications, please filter before use. Note that you may experience some loss of protein during the filtration process.



[View online »](#)

Storage:	Store at -80°C.
Stability:	Stable for 12 months from the date of receipt of the product under proper storage and handling conditions. Avoid repeated freeze-thaw cycles.
RefSeq:	<a href="#">NP_006386</a>
Locus ID:	10533
UniProt ID:	<a href="#">O95352</a> , <a href="#">B3KQM6</a>
RefSeq Size:	2396
Cytogenetics:	3p25.3
RefSeq ORF:	2109
Synonyms:	APG7-LIKE; APG7L; GSA7
Summary:	This gene encodes an E1-like activating enzyme that is essential for autophagy and cytoplasmic to vacuole transport. The encoded protein is also thought to modulate p53-dependent cell cycle pathways during prolonged metabolic stress. It has been associated with multiple functions, including axon membrane trafficking, axonal homeostasis, mitophagy, adipose differentiation, and hematopoietic stem cell maintenance. Alternative splicing results in multiple transcript variants. [provided by RefSeq, Sep 2015]
Protein Pathways:	Regulation of autophagy

### Product images:



Coomassie blue staining of purified ATG7 protein (Cat# [TP315079]). The protein was produced from HEK293T cells transfected with ATG7 cDNA clone (Cat# [RC215079]) using MegaTran 2.0 (Cat# [TT210002]).