

Product datasheet for **TP313720L**

ALDH1L1 (NM_012190) Human Recombinant Protein

Product data:

Product Type:	Recombinant Proteins
Description:	Recombinant protein of human aldehyde dehydrogenase 1 family, member L1 (ALDH1L1), 1 mg
Species:	Human
Expression Host:	HEK293T
Expression cDNA Clone or AA Sequence:	>RC213720 representing NM_012190 Red =Cloning site Green =Tags(s)

MKIAVIGQSLFGQEVYCHLRKEGHEVGVFTVPDKDGKADPLGLEAEKDGVPVFKYSRWRKAGQALPDVW
AKYQALGAELNVLPFCSQFIPMEIISAPRHGSIIYHPSLLPRHRGASAINWTLIHGDKKGGFSIFWADDG
LDTGDLQLLQKECEVLPDDTVSTLYNRFLFPEGIKGMVQAVRLIAEGKAPRLPQPEEGATYEGIQKKETAK
INWDQPAEAIHNWIRGNDKVPGAWTEACEQKLTFFNSTLNTSGLVPEGDALPIGAHRPGVVTKAGLILF
GNDDKMLLVKNIQLEDGKMILASNFFKGAASSVLELTAELVTAEAVRSFWQRILPKVLEVEDSTDFFKS
GAASVDVRLVEEVKELCDGLELENEVDVYMASTFGDFIQLLVRKLRGHDEEGECSIDYVEMAVNKRTVRM
PHQLFIGGEFVDAEAGAKTSETINPTDGSVICQVSLAQVTDVDKAVAAAKDAFENGRWGKIGARDRGRMLY
RLADLMEQHQEELATIEALDAGAVYTLALKTHVGMISIQTFRYFAGWCDKIQGSTIPINQARPNRNLTLTR
KEPVGVCIIIPWNYPLMMLSWKTAACLAAGNTVWIKPAQVTPLTALKFAELTKAGIPKGVVNVLPGSG
SLVGQRLSDHPDVRKIGFTGSTEVGKHKIMKSCAISNVKKVLSLEGGKSLIIFADCDLNKAVQMGMSSVF
FNKGENCIAAGRLFVEDSIHDEFVRRVVEVRKMKVGNPLDRDTHGPNQNHHAHLVKLMEYCQHGVKEGA
TLVCGGNQVPRPGFFFEPTVFTDVEDHMFIAKEESFGPVMIIISRFADGDLDAVLSRANATEFGLASGVFT
RDINKALYVSDKLQAGTVFVNTYKTDVAAPFGGFKQSGFGKDLGEAALNEYLRVKTVTFEY

TRTRPLEQKLISEEDLAANDILDYKDDDDKV

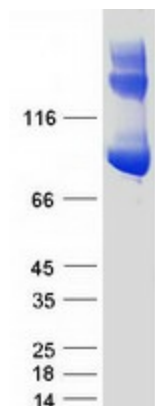
Tag:	C-Myc/DDK
Predicted MW:	98.6 kDa
Concentration:	>0.05 µg/µL as determined by microplate BCA method
Purity:	> 80% as determined by SDS-PAGE and Coomassie blue staining
Buffer:	25 mM Tris-HCl, 100 mM glycine, pH 7.3, 10% glycerol
Preparation:	Recombinant protein was captured through anti-DDK affinity column followed by conventional chromatography steps.



[View online »](#)

Note:	For testing in cell culture applications, please filter before use. Note that you may experience some loss of protein during the filtration process.
Storage:	Store at -80°C.
Stability:	Stable for 12 months from the date of receipt of the product under proper storage and handling conditions. Avoid repeated freeze-thaw cycles.
RefSeq:	NP_036322
Locus ID:	10840
UniProt ID:	O75891 , Q53H87
RefSeq Size:	3125
Cytogenetics:	3q21.3
RefSeq ORF:	2706
Synonyms:	10-fTHF; 10-FTHFDH; FDH; FTHFD
Summary:	The protein encoded by this gene catalyzes the conversion of 10-formyltetrahydrofolate, nicotinamide adenine dinucleotide phosphate (NADP+), and water to tetrahydrofolate, NADPH, and carbon dioxide. The encoded protein belongs to the aldehyde dehydrogenase family. Loss of function or expression of this gene is associated with decreased apoptosis, increased cell motility, and cancer progression. There is an antisense transcript that overlaps on the opposite strand with this gene locus. Alternative splicing results in multiple transcript variants. [provided by RefSeq, Jun 2012]
Protein Families:	Druggable Genome
Protein Pathways:	One carbon pool by folate

Product images:



Coomassie blue staining of purified ALDH1L1 protein (Cat# [TP313720]). The protein was produced from HEK293T cells transfected with ALDH1L1 cDNA clone (Cat# [RC213720]) using MegaTran 2.0 (Cat# [TT210002]).