

Product datasheet for **TP313000L**

C1QL2 (NM_182528) Human Recombinant Protein

Product data:

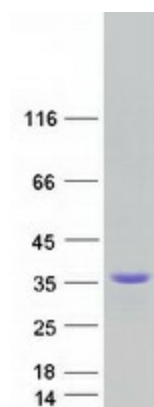
Product Type:	Recombinant Proteins
Description:	Recombinant protein of human complement component 1, q subcomponent-like 2 (C1QL2), 1 mg
Species:	Human
Expression Host:	HEK293T
Expression cDNA Clone or AA Sequence:	>RC213000 representing NM_182528 Red =Cloning site Green =Tags(s) MALGLLIAVPLLLQAAPRGAAHYEMMGTCRMICDPYTAAPGGEPGAKAQPPGPSTAALVEMQDLSANPP PPFIQGPKGDPGRPGKPGPRGPPGEPGPPGPRGPPGEKGDSDSRPGLPGLQLTAGTASGVGVVGGGAGVGG DSEGEVTSALSATFSGPKIAFYVGLKSPHEGYEVLKFDDVVTNLGNHYDPTTGKFCQVRGIYFFTYHIL MRGGDGTSMWADLCKNGQVRASIAQDADQNYDYASNSVVLHLDSGDEVYVKLDGGKAHGGNNNKYSTFS GFLLYPD TRTRPLEQKLISEEDLAANDILDYKDDDDKV
Tag:	C-Myc/DDK
Predicted MW:	29.3 kDa
Concentration:	>0.05 µg/µL as determined by microplate BCA method
Purity:	> 80% as determined by SDS-PAGE and Coomassie blue staining
Buffer:	25 mM Tris-HCl, 100 mM glycine, pH 7.3, 10% glycerol
Preparation:	Recombinant protein was captured through anti-DDK affinity column followed by conventional chromatography steps.
Note:	For testing in cell culture applications, please filter before use. Note that you may experience some loss of protein during the filtration process.
Storage:	Store at -80°C.
Stability:	Stable for 12 months from the date of receipt of the product under proper storage and handling conditions. Avoid repeated freeze-thaw cycles.
RefSeq:	<u>NP_872334</u>
Locus ID:	165257



[View online »](#)

UniProt ID:	<u>Q7Z5L3, A0A3B0IND4</u>
RefSeq Size:	2066
Cytogenetics:	2q14.2
RefSeq ORF:	861
Synonyms:	C1QTNF10; CTRP10
Summary:	May regulate the number of excitatory synapses that are formed on hippocampus neurons. Has no effect on inhibitory synapses (By similarity).[UniProtKB/Swiss-Prot Function]
Protein Families:	Secreted Protein

Product images:



Coomassie blue staining of purified C1QL2 protein (Cat# [TP313000]). The protein was produced from HEK293T cells transfected with C1QL2 cDNA clone (Cat# [RC213000]) using MegaTran 2.0 (Cat# [TT210002]).