

## Product datasheet for **TP311494**

### ENGASE (NM\_001042573) Human Recombinant Protein

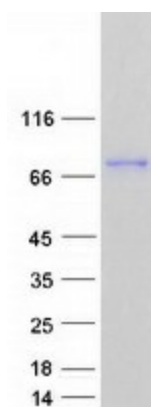
#### Product data:

<b>Product Type:</b>	Recombinant Proteins
<b>Description:</b>	Recombinant protein of human endo-beta-N-acetylglucosaminidase (ENGASE), 20 µg
<b>Species:</b>	Human
<b>Expression Host:</b>	HEK293T
<b>Expression cDNA Clone or AA Sequence:</b>	>RC211494 representing NM_001042573 <b>Red</b> =Cloning site <b>Green</b> =Tags(s)
	<p>MEAAAVTVTRSATRRRRRQLQGLAAPEAGTQEEQEDQEPRPRRRRPGRSIKDEEEETVFREVVSFSPDPL PVRYYDKDTTKPIFYLSLEELLAWKPRLEDGFNVALEPLACRQPPLSSQRPRTLLCHDMMGGYLDLDRF IQGSVVQTPYAFYHWQCIDVFVYFSHHTVTIPPVGTNTAHRHGVCVLGTFITEWNEGGRLCEAFLAGDE RSYQAVADRLVQITQFFRFDGWLINIENSLSLAAVGNMPPFLRYLTTQLHRQVPGGLVLWYDSVVQSGQL KWQDELNQHNRFVFDSCDGFFTNYNWREEHLERMLGQAGERRADVVGVDVFARGNVVGGFRDFTDKSLEL IRKHGFSVALFAPGWVYECLEKKDFFQNQDKFWGRLERYLPTHSICSLPFVTSFCLGMGARRVCYGQEEA VGPWYHLSAQEIQPLFGEHRLGGDGRGWVRTHCCLEDAWHGGSSLLVRGVIPEVGNVAVRLFSLQAPVP PKIYLSMVYKLEGPTDVTVALELTTGDAGSCHIGGISVLNAETSSRHSLRPLRPPTKLARWVGRGCRQL SGGWVQHCYEVSLRGCLLLDLLVCFSRPPGSRREEESFTCRLGEIQVDAASLLAPLPQVAVTISHIRWQ PSASEREGPPALLQLSCTLHWSFLLSQVRCFRIHCWGGMSDDSPGRELPRPEMPMFLGLAFATQYRIVDL LVEAAGPGQDRRMEFLVEPVPKEGFRVPAEWGRAVLLYSAPA</p> <p><b>TRTRPLEQKLISEEDLAANDILDYKDDDDKV</b></p>
<b>Tag:</b>	C-Myc/DDK
<b>Predicted MW:</b>	83.8 kDa
<b>Concentration:</b>	>0.05 µg/µL as determined by microplate BCA method
<b>Purity:</b>	> 80% as determined by SDS-PAGE and Coomassie blue staining
<b>Buffer:</b>	25 mM Tris-HCl, 100 mM glycine, pH 7.3, 10% glycerol
<b>Bioactivity:</b>	Enzyme activity (PMID: <a href="#">28512024</a> )
<b>Preparation:</b>	Recombinant protein was captured through anti-DDK affinity column followed by conventional chromatography steps.
<b>Note:</b>	For testing in cell culture applications, please filter before use. Note that you may experience some loss of protein during the filtration process.



View online »

<b>Storage:</b>	Store at -80°C.
<b>Stability:</b>	Stable for 12 months from the date of receipt of the product under proper storage and handling conditions. Avoid repeated freeze-thaw cycles.
<b>RefSeq:</b>	<u>NP_001036038</u>
<b>Locus ID:</b>	64772
<b>UniProt ID:</b>	<u>Q8NFI3</u>
<b>RefSeq Size:</b>	4490
<b>Cytogenetics:</b>	17q25.3
<b>RefSeq ORF:</b>	2229
<b>Summary:</b>	This gene encodes a cytosolic enzyme which catalyzes the hydrolysis of peptides and proteins with mannose modifications to produce free oligosaccharides. [provided by RefSeq, Feb 2012]
<b>Protein Pathways:</b>	Other glycan degradation

**Product images:**

Coomassie blue staining of purified ENGASE protein (Cat# TP311494). The protein was produced from HEK293T cells transfected with ENGASE cDNA clone (Cat# [RC211494]) using MegaTran 2.0 (Cat# [TT210002]).