

## Product datasheet for **TP311299**

### Casein Kinase 2 beta (CSNK2B) (NM\_001320) Human Recombinant Protein

#### Product data:

**Product Type:** Recombinant Proteins

**Description:** Recombinant protein of human casein kinase 2, beta polypeptide (CSNK2B), 20 µg

**Species:** Human

**Expression Host:** HEK293T

**Expression cDNA Clone  
or AA Sequence:** >RC211299 protein sequence  
**Red**=Cloning site **Green**=Tags(s)

MSSSEEVSWISWFCGLRGNEFFCEVDEDEYIQDKFNLTGLNEQVPHYRQALDMILDLEPDEELEDNPNQSD  
LIEQAAEMLYGLIHARYILTNRGIAQMLEKYQQGDFGYCPRVYCENQPMLPIGLSDIPGEAMVKLYCPKC  
MDVYTPKSSRHHHTDGAYFGTGFPHMLFMVHPEYRPKRPNQFVPRLYGFKIHPMAYQLQLQAASNFKSP  
VKTIR

**TRTRPLEQKLISEEDLAANDILDYKDDDDKV**

**Tag:** C-Myc/DDK

**Predicted MW:** 24.8 kDa

**Concentration:** >0.05 µg/µL as determined by microplate BCA method

**Purity:** > 80% as determined by SDS-PAGE and Coomassie blue staining

**Buffer:** 25 mM Tris-HCl, 100 mM glycine, pH 7.3, 10% glycerol

**Preparation:** Recombinant protein was captured through anti-DDK affinity column followed by conventional chromatography steps.

**Note:** For testing in cell culture applications, please filter before use. Note that you may experience some loss of protein during the filtration process.

**Storage:** Store at -80°C.

**Stability:** Stable for 12 months from the date of receipt of the product under proper storage and handling conditions. Avoid repeated freeze-thaw cycles.

**RefSeq:** [NP\\_001311](#)

**Locus ID:** 1460

**UniProt ID:** [P67870](#), [N0E4C7](#)



[View online »](#)

RefSeq Size: 1149

Cytogenetics: 6p21.33

RefSeq ORF: 645

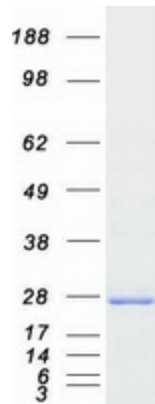
Synonyms: CK2B; CK2N; Ckb1; Ckb2; CSK2B; G5A; POBINDS

**Summary:** This gene encodes the beta subunit of casein kinase II, a ubiquitous protein kinase which regulates metabolic pathways, signal transduction, transcription, translation, and replication. The enzyme is composed of three subunits, alpha, alpha prime and beta, which form a tetrameric holoenzyme. The alpha and alpha prime subunits are catalytic, while the beta subunit serves regulatory functions. The enzyme localizes to the endoplasmic reticulum and the Golgi apparatus. Two transcript variants encoding different isoforms have been found for this gene. [provided by RefSeq, Sep 2013]

**Protein Families:** Druggable Genome

**Protein Pathways:** Adherens junction, Tight junction, Wnt signaling pathway

### Product images:



Coomassie blue staining of purified CSNK2B protein (Cat# TP311299). The protein was produced from HEK293T cells transfected with CSNK2B cDNA clone (Cat# [RC211299]) using MegaTran 2.0 (Cat# [TT210002]).