

Product datasheet for TP311127M

gamma Tubulin (TUBG2) (NM_016437) Human Recombinant Protein

Product data:

Product Type: Recombinant Proteins

Description: Recombinant protein of human tubulin, gamma 2 (TUBG2), 100 µg

Species: Human

Expression Host: HEK293T

Expression cDNA Clone or AA Sequence: >RC211127 protein sequence
Red=Cloning site Green=Tags(s)

MPREIITLQLGQCGNQIGFEFWKQLCAEHGISPEGIVEEFATEGTDRKDVFFYQADDEHYIPRAVLLDLE
PRVIHSILNSPYAKLYNPENIYLSEHGGGAGNNWASGFSQGEKIHEDIFDIIDREADGSDSLEGFVLCHS
IAGGTGSGLGSYLLERLNDRYPKKLVQTYSVFPYQDEMSDWWWQPYNSLLTLKRLTQNADCVVLDNTAL
NRIATDRLHIQNPSFSQINQLVSTIMSASTTTLRYPGYMNNDLIGLIASLIPTPRLHFLMTGYTPLTTDQ
SVASVRKTTVLDVMRRLQPKNVMVSTGRDRQTNHCYIAILNIIQGEVDPTQVHKSLQRIRERKLANFIP
WGPASIQVALSRKSPYLP SAHRVSGLMANHTSISLFESSCQQFDKLRKRDAFLEQFRKEDMFKDNFDE
MDRSREVVQELIDEYHAATQPDYISWGTQEQ

TRTRPLEQKLISEEDLAANDILDYKDDDDKV

Tag: C-Myc/DDK

Predicted MW: 50.9 kDa

Concentration: >0.05 µg/µL as determined by microplate BCA method

Purity: > 80% as determined by SDS-PAGE and Coomassie blue staining

Buffer: 25 mM Tris-HCl, 100 mM glycine, pH 7.3, 10% glycerol

Preparation: Recombinant protein was captured through anti-DDK affinity column followed by conventional chromatography steps.

Note: For testing in cell culture applications, please filter before use. Note that you may experience some loss of protein during the filtration process.

Storage: Store at -80°C.

Stability: Stable for 12 months from the date of receipt of the product under proper storage and handling conditions. Avoid repeated freeze-thaw cycles.

RefSeq: [NP_057521](#)



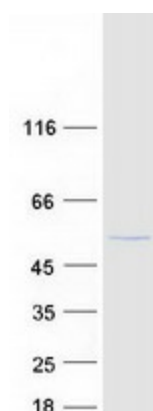
[View online »](#)

Locus ID: 27175
UniProt ID: [Q9NRH3](#)
RefSeq Size: 1841
Cytogenetics: 17q21.2
RefSeq ORF: 1353

Summary: Tubulin is the major constituent of microtubules. The gamma chain is found at microtubule organizing centers (MTOC) such as the spindle poles or the centrosome. Pericentriolar matrix component that regulates alpha/beta chain minus-end nucleation, centrosome duplication and spindle formation (By similarity).[UniProtKB/Swiss-Prot Function]

Protein Families: Druggable Genome

Product images:



Coomassie blue staining of purified TUBG2 protein (Cat# [TP311127]). The protein was produced from HEK293T cells transfected with TUBG2 cDNA clone (Cat# [RC211127]) using MegaTran 2.0 (Cat# [TT210002]).