

Product datasheet for **TP309305**

SOCS3 (NM_003955) Human Recombinant Protein

Product data:

Product Type:	Recombinant Proteins
Description:	Recombinant protein of human suppressor of cytokine signaling 3 (SOCS3), 20 µg
Species:	Human
Expression Host:	HEK293T
Expression cDNA Clone or AA Sequence:	>RC209305 protein sequence Red =Cloning site Green =Tags(s)
	MVTHSKFPAAGMSRPLDTSRLKTFSSKSEYQLVVNAVRKLQESGFYWSAVTGGEANLLLSAEPAGTFLI RDSSDQRHFFTLVKTQSGTKNLRIQCEGGSFSLQSDPRSTQPVPRFDCVLKLVHHYMPPPGAPSPFPSP TEPSSEVPEQPSAQPLPGSPRRAYIYSGGEKIPLVLSRPLSSNVATLQHLCRKTVNGHLDSYEKVTQL PGPIREFLDQYDAPL
	TRTRPLEQKLISEEDLAANDILDYKDDDDKV
Tag:	C-Myc/DDK
Predicted MW:	24.6 kDa
Concentration:	>0.05 µg/µL as determined by microplate BCA method
Purity:	> 80% as determined by SDS-PAGE and Coomassie blue staining
Buffer:	25 mM Tris-HCl, 100 mM glycine, pH 7.3, 10% glycerol
Preparation:	Recombinant protein was captured through anti-DDK affinity column followed by conventional chromatography steps.
Note:	For testing in cell culture applications, please filter before use. Note that you may experience some loss of protein during the filtration process.
Storage:	Store at -80°C.
Stability:	Stable for 12 months from the date of receipt of the product under proper storage and handling conditions. Avoid repeated freeze-thaw cycles.
RefSeq:	NP_003946
Locus ID:	9021
UniProt ID:	O14543 , Q6FI39



[View online »](#)

RefSeq Size: 2737

Cytogenetics: 17q25.3

RefSeq ORF: 675

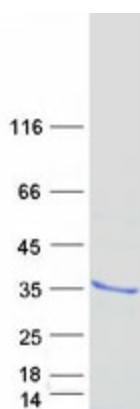
Synonyms: ATOD4; CIS3; Cish3; SOCS-3; SSI-3; SSI3

Summary: This gene encodes a member of the STAT-induced STAT inhibitor (SSI), also known as suppressor of cytokine signaling (SOCS), family. SSI family members are cytokine-inducible negative regulators of cytokine signaling. The expression of this gene is induced by various cytokines, including IL6, IL10, and interferon (IFN)-gamma. The protein encoded by this gene can bind to JAK2 kinase, and inhibit the activity of JAK2 kinase. Studies of the mouse counterpart of this gene suggested the roles of this gene in the negative regulation of fetal liver hematopoiesis, and placental development. [provided by RefSeq, Jul 2008]

Protein Families: Druggable Genome

Protein Pathways: Adipocytokine signaling pathway, Insulin signaling pathway, Jak-STAT signaling pathway, Type II diabetes mellitus, Ubiquitin mediated proteolysis

Product images:



Coomassie blue staining of purified SOCS3 protein (Cat# TP309305). The protein was produced from HEK293T cells transfected with SOCS3 cDNA clone (Cat# [RC209305]) using MegaTran 2.0 (Cat# [TT210002]).