

## Product datasheet for **TP307101M**

### CSDE1 (NM\_007158) Human Recombinant Protein

#### Product data:

Product Type:	Recombinant Proteins
Description:	Recombinant protein of human cold shock domain containing E1, RNA-binding (CSDE1), transcript variant 2, 100 µg
Species:	Human
Expression Host:	HEK293T
Expression cDNA Clone or AA Sequence:	>RC207101 protein sequence <b>Red</b> =Cloning site <b>Green</b> =Tags(s)

MSFDPNLLHNNGHNGYPNGTSAALRETGVIEKLLTSYGFQCSEARLFFHCSQYNGNLQDLKVGDDVE  
FEVSSDRRTGKPIAVKLVKIKQEILPEERMNGQEVFYLTYTPEDVEGNVQLETGDKINVIDNNKHTGAV  
SARNIMLLKKKQARCQGVVCAMKEAFGFIERGDVVKEIFFHYSEFKGDLETLPQDDEFTIKDRNGKEV  
ATDVRLLPQGTIVFEDISIEHFEGTVTKVIPKVPKSNQNDPLPGRIKVDVFKELPFGDKDTKSKVTLL  
EGDHVRFNISTDRRDKLERATNIEVLSNTFQFTNEAREMGVIAAMRDGFGFIKCVDRDVRMFFHFSEILD  
GNQLHIADEVEFTVVPDMLSAQRNHAIKIKLPKGTVSFHSKSDHRFLGTVEKEATFSNPKTTSPNKGKE  
KEAEDGIIAYDDCGVKLTIAFAQKDEVGSTSPQIGDKVEFSISDKQRPQQVATCVRLGRNSNSKRLLG  
YVATLKDNFGFIETANHDKEIFFHYSEFGDVSLELGDMMVEYLSKGGKGNKVSAAEKVNKTHSVNGITEE  
ADPTIYSGKVIPLRSVDPTQTEYQGMIEIVEEGDMKGEVYVYFVGMANKGDCLQKGESVKFQLCVLGG  
NAQTMAYNITPLRRATVECVKDQFGFINYEVGDSKKLFFHVKEVQDGIELQAGDEVEFSVILNQRGTGKCS  
ACNVWRVCEGPKAVAAPRPDRLVNRLKNITLDDASAPRLMVLQRGPDNSMGFGAERKIRQAGVID

**TRTRPLEQKLISEEDLAANDILDYKDDDDKV**

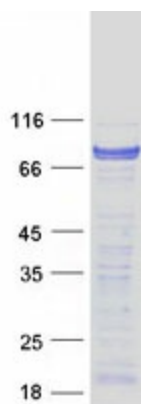
Tag:	C-Myc/DDK
Predicted MW:	85.6 kDa
Concentration:	>0.05 µg/µL as determined by microplate BCA method
Purity:	> 80% as determined by SDS-PAGE and Coomassie blue staining
Buffer:	25 mM Tris-HCl, 100 mM glycine, pH 7.3, 10% glycerol
Preparation:	Recombinant protein was captured through anti-DDK affinity column followed by conventional chromatography steps.
Note:	For testing in cell culture applications, please filter before use. Note that you may experience some loss of protein during the filtration process.



[View online »](#)

<b>Storage:</b>	Store at -80°C.
<b>Stability:</b>	Stable for 12 months from the date of receipt of the product under proper storage and handling conditions. Avoid repeated freeze-thaw cycles.
<b>RefSeq:</b>	<a href="#">NP_009089</a>
<b>Locus ID:</b>	7812
<b>UniProt ID:</b>	<a href="#">O75534</a> , <a href="#">A0A024R0K2</a>
<b>RefSeq Size:</b>	4090
<b>Cytogenetics:</b>	1p13.2
<b>RefSeq ORF:</b>	2301
<b>Synonyms:</b>	D1S155E; UNR
<b>Summary:</b>	RNA-binding protein. Required for internal initiation of translation of human rhinovirus RNA. May be involved in translationally coupled mRNA turnover. Implicated with other RNA-binding proteins in the cytoplasmic deadenylation/translational and decay interplay of the FOS mRNA mediated by the major coding-region determinant of instability (mCRD) domain. [UniProtKB/Swiss-Prot Function]
<b>Protein Families:</b>	Transcription Factors

### Product images:



Coomassie blue staining of purified CSDE1 protein (Cat# [TP307101]). The protein was produced from HEK293T cells transfected with CSDE1 cDNA clone (Cat# [RC207101]) using MegaTran 2.0 (Cat# [TT210002]).