

Product datasheet for TP307101L

CSDE1 (NM_007158) Human Recombinant Protein

Product data:

Product Type:	Recombinant Proteins
Description:	Recombinant protein of human cold shock domain containing E1, RNA-binding (CSDE1), transcript variant 2, 1 mg
Species:	Human
Expression Host:	HEK293T
Expression cDNA Clone or AA Sequence:	>RC207101 protein sequence Red =Cloning site Green =Tags(s)

MSFDPNLLHNNGHNGYPNGTSAALRETGVIEKLLTSYGFQCSEARLFFHCSQYNGNLQDLKVGDDVE
FEVSSDRRTGKPIAVKLVKIKQEILPEERMNGQEVFYLTYTPEDVEGNVQLETGDKINVIDNNKHTGAV
SARNIMLLKKKQARCQGVVCAMKEAFGFIERGDVVKEIFFHYSEFKGDLETLPQDDEFTIKDRNGKEV
ATDVRLLPQGTIVFEDISIEHFEGTVTKVIPKVPKSNQNDPLPGRIKVDVFKELPFGDKDTKSKVTLL
EGDHVRFNISTDRRDKLERATNIEVLSNTFQFTNEAREMGVIAAMRDGFGFIKCVDRDVRMFFHFSEILD
GNQLHIADEVEFTVVPDMLSAQRNHAIRIKKLPKGTVSFHSKSDHRFLGTVEKEATFSNPKTTPSPKNGKE
KEAEDGIIAYDDCGVKLTIAFAQKDEVGSTSPQIGDKVEFSISDKQRPQQVATCVRLGRNSNSKRLLG
YVATLKDNFGFIETANHDKEIFFHYSEFGDVSLELGMVEYLSKKGKGNKVSAAEKVNKTHSVNGITEE
ADPTIYSGKVIPLRSVDPTQTEYQGMIEIVEEGDMKGEVYVYFVGMANKGDCLQKGESVKFQLCVLGQ
NAQTMAYNITPLRRATVECVKDQFGFINYEVGDSKKLFFHVKEVQDGIELQAGDEVEFSVILNQRGTGKCS
ACNVWRVCEGPKAVAAPRPDRLVNRLKNITLDDASAPRLMVLQRGPDNSMGFGAERKIRQAGVID

TRTRPLEQKLISEEDLAANDILDYKDDDDKV

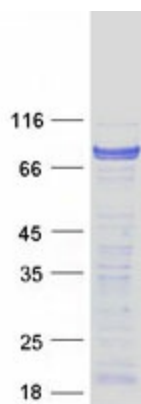
Tag:	C-Myc/DDK
Predicted MW:	85.6 kDa
Concentration:	>0.05 µg/µL as determined by microplate BCA method
Purity:	> 80% as determined by SDS-PAGE and Coomassie blue staining
Buffer:	25 mM Tris-HCl, 100 mM glycine, pH 7.3, 10% glycerol
Preparation:	Recombinant protein was captured through anti-DDK affinity column followed by conventional chromatography steps.
Note:	For testing in cell culture applications, please filter before use. Note that you may experience some loss of protein during the filtration process.



[View online »](#)

Storage:	Store at -80°C.
Stability:	Stable for 12 months from the date of receipt of the product under proper storage and handling conditions. Avoid repeated freeze-thaw cycles.
RefSeq:	NP_009089
Locus ID:	7812
UniProt ID:	O75534 , A0A024R0K2
RefSeq Size:	4090
Cytogenetics:	1p13.2
RefSeq ORF:	2301
Synonyms:	D1S155E; UNR
Summary:	RNA-binding protein. Required for internal initiation of translation of human rhinovirus RNA. May be involved in translationally coupled mRNA turnover. Implicated with other RNA-binding proteins in the cytoplasmic deadenylation/translational and decay interplay of the FOS mRNA mediated by the major coding-region determinant of instability (mCRD) domain. [UniProtKB/Swiss-Prot Function]
Protein Families:	Transcription Factors

Product images:



Coomassie blue staining of purified CSDE1 protein (Cat# [TP307101]). The protein was produced from HEK293T cells transfected with CSDE1 cDNA clone (Cat# [RC207101]) using MegaTran 2.0 (Cat# [TT210002]).