

Product datasheet for **TP306617M**

MPPED2 (NM_001584) Human Recombinant Protein

Product data:

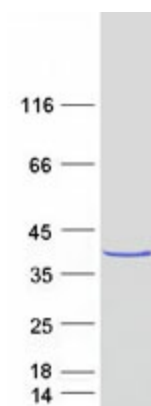
| | |
|---------------------------------------|---|
| Product Type: | Recombinant Proteins |
| Description: | Recombinant protein of human metallophosphoesterase domain containing 2 (MPPED2), transcript variant 1, 100 µg |
| Species: | Human |
| Expression Host: | HEK293T |
| Expression cDNA Clone or AA Sequence: | >RC206617 protein sequence Red =Cloning site Green =Tags(s) |
| | <p>MAHGIPSQGKVTITVDEYSSNPTQAFTHYNINQSRFQPPHVMVDPIPYDTPKPAHGTRFVCISDTHSRT DGIQMPYGDILLHTGDFTELGLPSEVKKFNDWLGNLPEYKIVIAGNHELTFDKEFMADLVKQDYRFP VSKLKPEDFDNVQSLTNSIYLQDSEVTVKGFRIYGAPWTPWFNGWGFNLPRGQSLDKWNLIPEGIDIL MTHGPPPLGFRDWVPKELQRVGCVELLNTVQRRVRPKLHVFGGIHEGYGIMTDGYTTYINASTCTVSFQPT NPPIIFDLNPQGS</p> <p>TRTRPLEQKLISEEDLAANDILDYKDDDDKV</p> |
| Tag: | C-Myc/DDK |
| Predicted MW: | 33.2 kDa |
| Concentration: | >0.05 µg/µL as determined by microplate BCA method |
| Purity: | > 80% as determined by SDS-PAGE and Coomassie blue staining |
| Buffer: | 25 mM Tris-HCl, 100 mM glycine, pH 7.3, 10% glycerol |
| Preparation: | Recombinant protein was captured through anti-DDK affinity column followed by conventional chromatography steps. |
| Note: | For testing in cell culture applications, please filter before use. Note that you may experience some loss of protein during the filtration process. |
| Storage: | Store at -80°C. |
| Stability: | Stable for 12 months from the date of receipt of the product under proper storage and handling conditions. Avoid repeated freeze-thaw cycles. |
| RefSeq: | NP_001575 |
| Locus ID: | 744 |



[View online »](#)

| | |
|---------------|---|
| UniProt ID: | Q15777 |
| RefSeq Size: | 2404 |
| Cytogenetics: | 11p14.1 |
| RefSeq ORF: | 882 |
| Synonyms: | 239FB; C11orf8 |
| Summary: | This gene likely encodes a metallophosphoesterase. The encoded protein may play a role a brain development. Alternatively spliced transcript variants have been described. [provided by RefSeq, Feb 2009] |

Product images:



Coomassie blue staining of purified MPPED2 protein (Cat# [TP306617]). The protein was produced from HEK293T cells transfected with MPPED2 cDNA clone (Cat# [RC206617]) using MegaTran 2.0 (Cat# [TT210002]).