

Product datasheet for **TP306612M**

CD2 (NM_001767) Human Recombinant Protein

Product data:

Product Type: Recombinant Proteins
Description: Purified recombinant protein of Homo sapiens CD2 molecule (CD2), 100 µg
Species: Human
Expression Host: HEK293T
Expression cDNA >RC206612 protein sequence
Clone or AA Sequence: **Red**=Cloning site **Green**=Tags(s)

MSFPCKFVASFLLIFNVSSKGAVSKEITNALETWGALGQDINLDIPSFQMSDDIDDIKWEKTSDDKKKIAQ
FRKEKETFKEKDITYKLFKNGTLKIKHLKTDQDIYKVSIIYDTKGKNVLEKIFDLKIQERVSKPKISWTCI
NTTLCCEVMNGTDPENLNYQDGKHLKLSQRVITHKWTTLSAKFKCTAGNKVSKESSVEPVSCPEKGLDI
YLIIGICGGGSLLMVAVALLVFYITKRKKQRSRRNDEELETRAHRVATEERGRKPQQIPASTPQNPATSQ
HPPPPPGHRSQAPSHRPPPPGHRVQHQPQKRPPAPSGTQVHQKGPPLPRPRVQPKPPHGAAENSLSPSS
N

TRTRPLEQKLISEEDLAANDILDYKDDDDKV

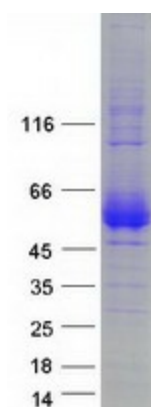
Tag: C-Myc/DDK
Predicted MW: 39.3 kDa
Concentration: >0.05 µg/µL as determined by microplate BCA method
Purity: > 80% as determined by SDS-PAGE and Coomassie blue staining
Buffer: 25 mM Tris-HCl, 100 mM glycine, pH 7.3, 10% glycerol
Preparation: Recombinant protein was captured through anti-DDK affinity column followed by conventional chromatography steps.
Note: For testing in cell culture applications, please filter before use. Note that you may experience some loss of protein during the filtration process.
Storage: Store at -80°C.
Stability: Stable for 12 months from the date of receipt of the product under proper storage and handling conditions. Avoid repeated freeze-thaw cycles.
RefSeq: [NP_001758](#)
Locus ID: 914



[View online »](#)

UniProt ID:	P06729 , Q53F96
RefSeq Size:	1595
Cytogenetics:	1p13.1
RefSeq ORF:	1053
Synonyms:	LFA-2; SRBC; T11
Summary:	The protein encoded by this gene is a surface antigen found on all peripheral blood T-cells. The encoded protein interacts with LFA3 (CD58) on antigen presenting cells to optimize immune recognition. A locus control region (LCR) has been found in the 3' flanking sequence of this gene. [provided by RefSeq, Jun 2016]
Protein Families:	Druggable Genome, Transmembrane
Protein Pathways:	Cell adhesion molecules (CAMs), Hematopoietic cell lineage

Product images:



Coomassie blue staining of purified CD2 protein (Cat# [TP306612]). The protein was produced from HEK293T cells transfected with CD2 cDNA clone (Cat# [RC206612]) using MegaTran 2.0 (Cat# [TT210002]).